



MANNINGTREE PARK

COUNTRY LIVING AT ITS FINEST



FIVE BEDROOM HOME

The Harcourt

Plots: 2 & 427

Gross Internal Area: 2,626 sq ft (244.00 sq m)

(H) = Plot is handed



Ground floor

Kitchen / Dining / Family area

8.59m x 6.42m | 28'2" x 21'1"

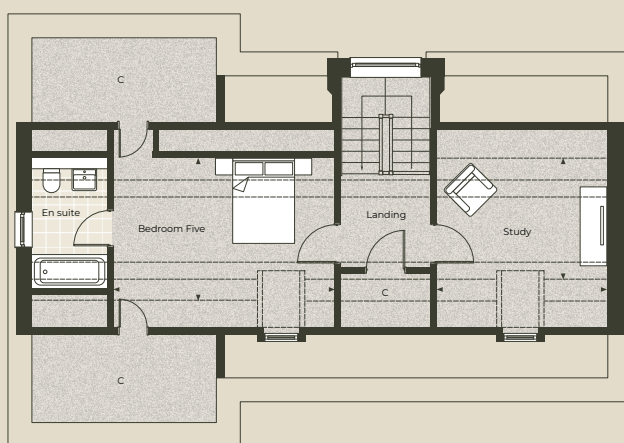
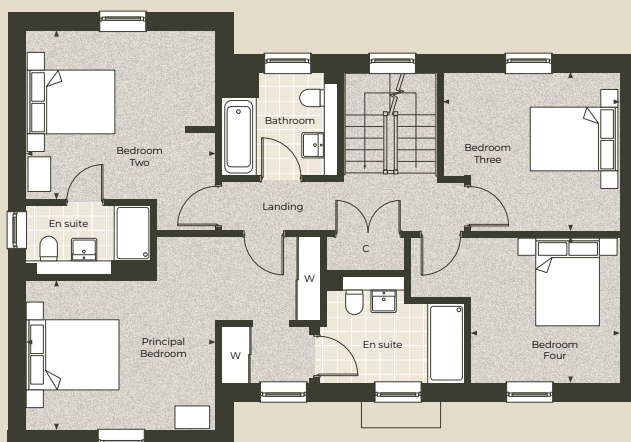
Living room

6.66m x 3.79m | 21'10" x 12'5"

Key

C – Cupboard W – Built in wardrobe ▲ – Front entrance ◀▶ – Depicts where measurements have been taken from
WC – Cloakroom ----- – Restricted Headroom

Individual plots vary in size, please ask the Sales Consultant for details.



First floor

Principal bedroom	6.43m x 4.16m 21'1" x 13'8"
Bedroom two	4.31m x 4.08m 14'2" x 13'5"
Bedroom three	3.79m x 3.42m 12'5" x 11'3"
Bedroom four	4.48m x 3.14m 14'8" x 10'4"

Second floor

Bedroom five	4.90m x 3.20m 16'1" x 10'6"
Study	3.79m x 3.20m 12'5" x 10'6"

Computer generated images are indicative only. Floor plans shown are indicative only. To increase legibility these plans have been sized to fit the page and as a result may be of a different scale to others within this document. Location of windows, doors, wardrobes, kitchen units, appliance spaces and bathroom fittings may differ. All measurements may vary within a tolerance of 5%. The dimensions are not intended to be used for carpet sizes, appliance sizes or items of furniture.

The Harcourt

A Refined Georgian Residence with Timeless Appeal

The Harcourt is a refined five bedroom Georgian-style home, showcasing an elegant architecture, classic aesthetics and modillion cornice. It's façade and balanced proportions are inspired by the finest East Anglian village homes. Inside, the home offers generously sized rooms, intricate features, and expansive windows that bathe the spaces in natural light. This residence perfectly marries the best of local grand architecture with contemporary comforts.



Honouring Simon Vernon-Harcourt

A Visionary in Design & Planning

The Harcourt is named in honour of Simon Vernon-Harcourt, the Design & Planning Director at City & Country. His dedication to taking inspiration from the best of traditional architecture and integrating this with modern design principles has been instrumental in shaping the company's warm and elegant portfolio of homes. This house stands as a testament to his vision and commitment to learn lessons from the best of local architecture and incorporate it in modern residential homes.



Contact us

01206 598 305

WWW.CITYANDCOUNTRY.CO.UK/MANNINGTREE-PARK

CITY & COUNTRY

Computer generated images are indicative only and can be subject to change. Images are indicative only. Layouts provide approximate measurements only. Dimensions, which are taken from the indicated points of measurement, are for guidance only and are not intended to be used for carpet sizes, appliance space or items of furniture. House areas are provided as gross internal areas and may vary. Bathroom and kitchen layouts are indicative only and are subject to change. House layout sizes may vary slightly from one another depending on the floor level – please refer to the price list or the Sales Team for more details. The information contained within this document does not constitute part of any offer, contract or warranty. Whilst the plans have been prepared with all due care for the convenience of the intending purchaser, the information contained herein is a preliminary guide only. September 2025.