



# MANNINGTREE PARK

COUNTRY LIVING AT ITS FINEST

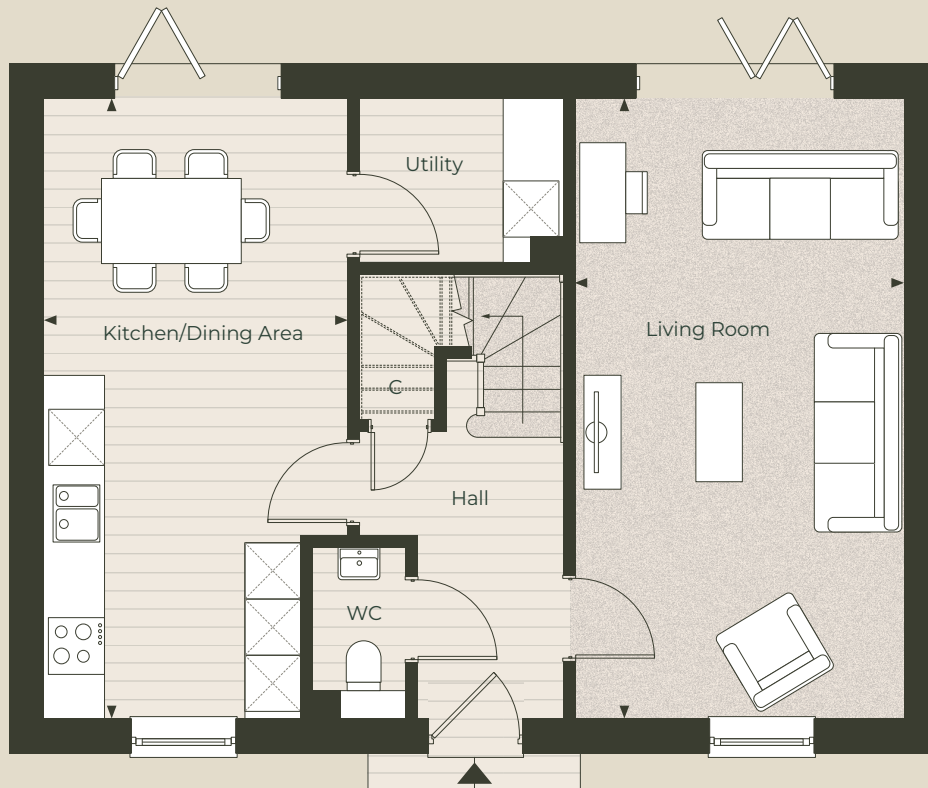


THREE BEDROOM HOME

## The Goodridge

Plots: 32 & 45

Gross Internal Area: 1,309.75 sq ft (121.68 sq m)



## Ground floor

Kitchen / Dining area

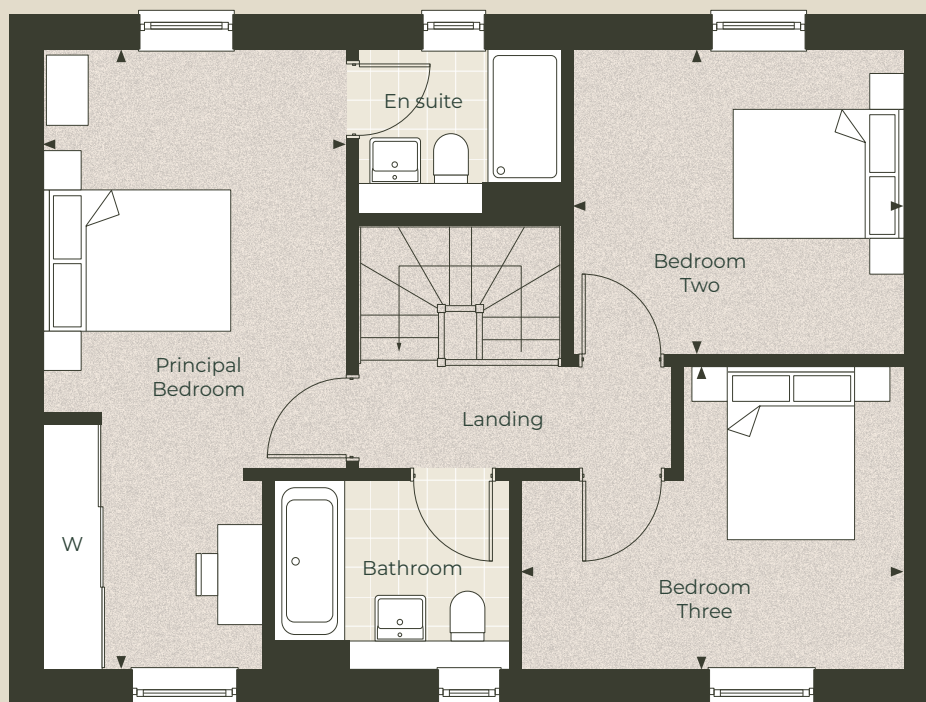
6.57m x 3.28m | 23'0" x 10'9"

Living room

6.57m x 3.55m | 21'7" x 11'8"

### Key

C – Cupboard W – Built in wardrobe ▲ – Front entrance ◀▶ – Depicts where measurements have been taken from  
WC – Cloakroom



## First floor

Principal bedroom

6.57m x 3.28m | 23'0" x 10'9"

Bedroom two

3.55m x 3.23m | 11'8" x 10'7"

Bedroom three

3.11m x 3.22m | 13'6" x 10'7"

Computer generated images are indicative only. Floor plans shown are indicative only. To increase legibility these plans have been sized to fit the page and as a result may be of a different scale to others within this document. Location of windows, doors, wardrobes, kitchen units, appliance spaces and bathroom fittings may differ. All measurements may vary within a tolerance of 5%. The dimensions are not intended to be used for carpet sizes, appliance sizes or items of furniture.

# The Goodridge

A Regency Home with Graceful Proportions and Elegant Detailing

The Goodridge is a Regency-style house featuring an open pediment and an elegantly crafted doorcase, capturing the refined aesthetics of the early 19th century. The design is characterised by its symmetrical façade, graceful proportions, and understated elegance. Inside, the home offers well-appointed rooms with high ceilings, detailed mouldings, and expansive windows that bathe the interiors in natural light. The Goodridge seamlessly combines historical charm with contemporary living, whilst reflecting the tradition of finely proportioned boarded homes often seen in East Anglia.



## Henry Goodridge

A Champion of Regency Architecture

Henry Goodridge (1797–1864) was a distinguished British architect known for his refined and picturesque designs, blending classical influences with a distinctive elegance. His most notable works include the Beckford's Tower in Bath, a striking example of his ability to create grandeur and visual drama through architecture. The Goodridge house type reflects his legacy, incorporating classical elements and carefully considered proportions to create a home that is both timeless and beautifully detailed.

Contact us

01206 598 305

[WWW.CITYANDCOUNTRY.CO.UK/MANNINGTREE-PARK](http://WWW.CITYANDCOUNTRY.CO.UK/MANNINGTREE-PARK)

CITY & COUNTRY

Computer generated images are indicative only and can be subject to change. Images are indicative only. Layouts provide approximate measurements only. Dimensions, which are taken from the indicated points of measurement, are for guidance only and are not intended to be used for carpet sizes, appliance space or items of furniture. House areas are provided as gross internal areas and may vary. Bathroom and kitchen layouts are indicative only and are subject to change. House layout sizes may vary slightly from one another depending on the floor level – please refer to the price list or the Sales Team for more details. The information contained within this document does not constitute part of any offer, contract or warranty. Whilst the plans have been prepared with all due care for the convenience of the intending purchaser, the information contained herein is a preliminary guide only. September 2025.