

A SIGNIFICANT NEW
EDITION TO BATH



The Townhouses

WELCOME TO
BATH PRESS

**LOCATED WITHIN THE WORLD
HERITAGE SITE OF BATH, JUST
WEST OF THE VIBRANT CITY
CENTRE, CITY & COUNTRY ARE
TRANSFORMING THE FORMER
PITMAN PRESS SITE INTO A
NEW COLLECTION OF MODERN
AND LUXURIOUS APARTMENTS
AND TOWNHOUSES.**

**ALL SET AROUND BEAUTIFULLY
LANDSCAPED COURTYARDS.**



The Townhouses

ELEGANT RESIDENCES AT BATH'S HISTORIC NEW ADDRESS

Bath Press offers a premium collection of timeless townhouses, expertly designed and carefully crafted for effortless modern living.

The distinctive façades subtly reflect Bath's beautiful Georgian buildings, with expansive glazing and excellent interior specification bringing contemporary luxury to the traditional townhouse style.







PHASE 2

LOWER BRISTOL ROAD

COVER HOUSE

CHAPTER HOUSE

INKWELL COURT

A SIGNIFICANT NEW EDITION TO BATH

— EST 2025 —



THE FINISHERS

LOWER BRISTOL ROAD

DORSET CLOSE

IMPRESSION
HOUSE

THE EDITION

CENTRAL PRESS
TOWNHOUSES

THE BINDERS

EAST PRESS
TOWNHOUSES

● TOWNHOUSES ● APARTMENTS



The Townhouses

FLOORPLANS

THE ALFRED

FOUR BEDROOM TOWNHOUSE

— 157 sqm 1,686 sqft —

A LIGHT AND SPACIOUS HOME FEATURING AN OPEN PLAN KITCHEN/DINING/LIVING SPACE OPENING ONTO THE GENEROUS PRIVATE GARDEN AND A SEPARATE FIRST FLOOR LIVING ROOM WITH BALCONY.

GROUND FLOOR

Kitchen/Dining
7.28m x 5.45m 23'11" x 17'10"

Study
3.15m x 2.15m 10'4" x 7'1"

MIDDLE FLOOR

Living room
5.45m x 4.00m 7'10" x 13'1"

Bedroom 1
3.73m x 3.08m 12'3" x 10'1"

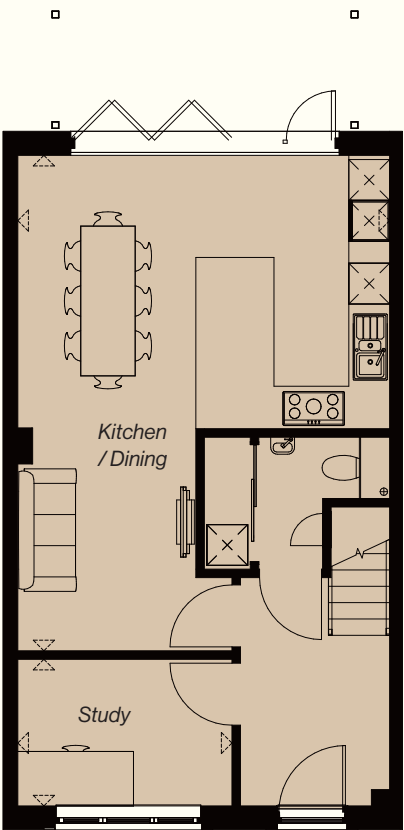
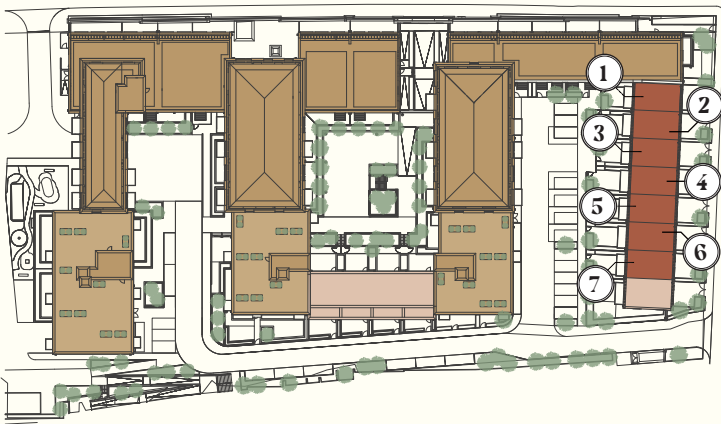
UPPER FLOOR

Bedroom 2
3.68m x 3.34m 12'1" x 10'11"

Bedroom 3
4.02m x 2.71m 13'2" x 8'11"

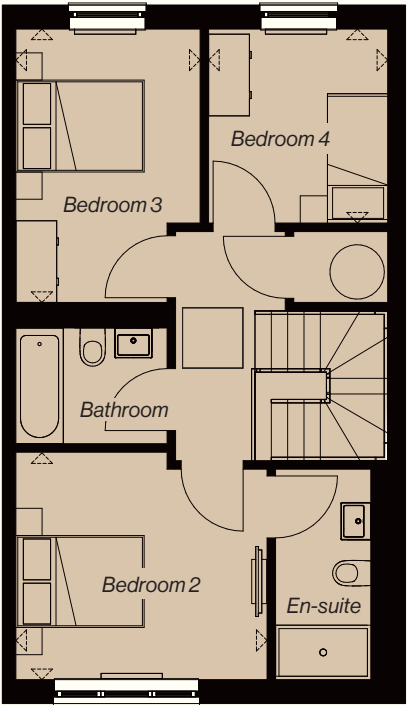
Bedroom 4
2.85m x 2.62m 9'4" x 8'7"

PLOTS 1 - 7
EAST PRESS TOWNHOUSES

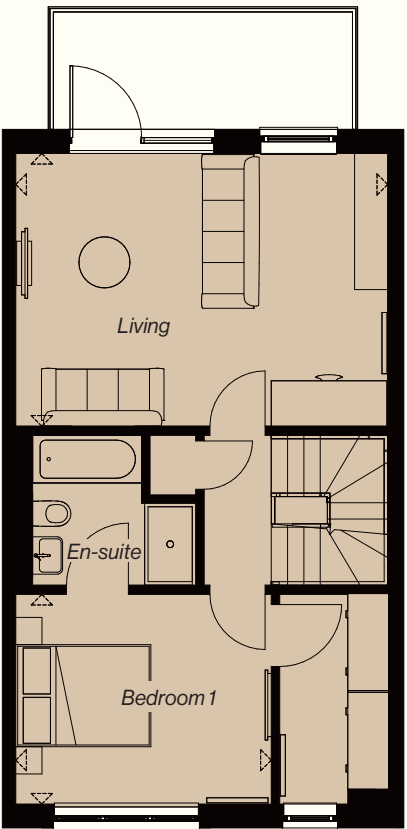


Ground Floor

Maximum dimensions are shown. They are intended as a guide only and are subject to change. Not all plans are to scale. Please speak to the sales advisor for further information.



Upper Floor



Middle Floor

THE ABRAHAM

FOUR BEDROOM TOWNHOUSE

— 156 sqm 1,684 sqft —

WITH A WONDERFULLY SPACIOUS KITCHEN/
DINING/LIVING AREA LEADING TO THE GARDEN
AND A GENEROUS FIRST FLOOR LIVING ROOM
WITH BALCONY, THIS IMPRESSIVE HOME PROVIDES
LUXURIOUS, FLEXIBLE MODERN LIVING.

GROUND FLOOR

Kitchen/Dining
9.56m x 5.46m 31'4" x 17'11"

MIDDLE FLOOR

Living
5.46m x 4.00m 17'11" x 13'1"

Bedroom 1
3.76m x 3.08m 12'4" x 10'1"

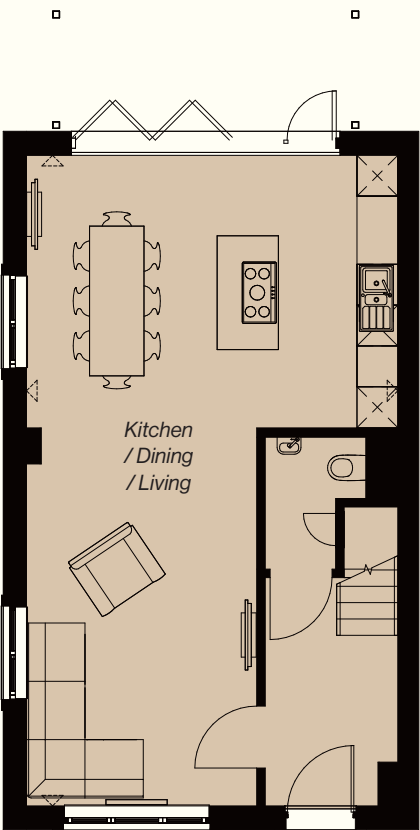
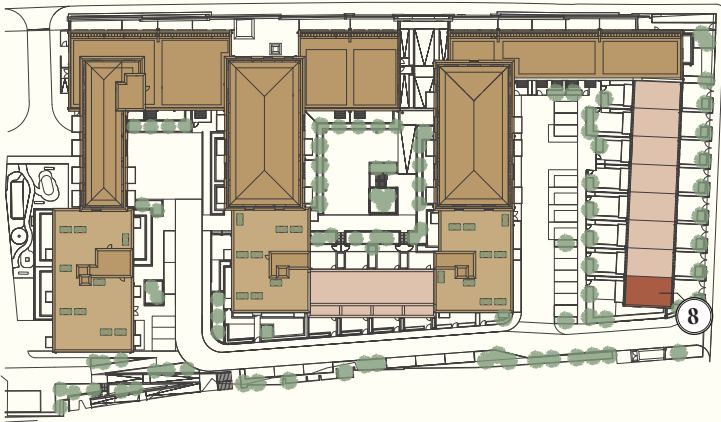
UPPER FLOOR

Bedroom 2
3.69m x 3.34m 12'1" x 10'11"

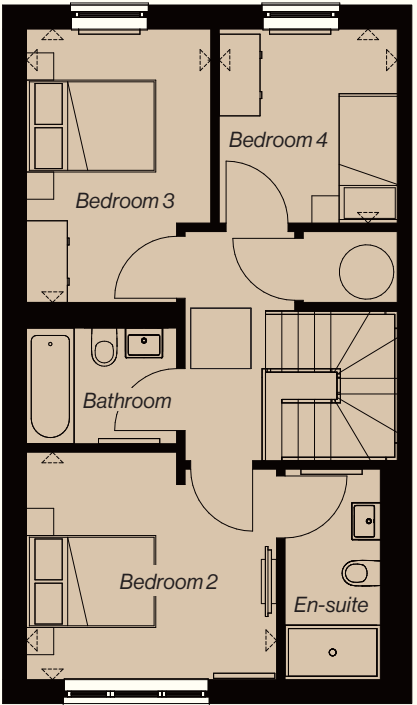
Bedroom 3
4.03m x 2.71m 13'3" x 10'11"

Bedroom 4
2.86m x 2.63m 9'4" x 8'7"

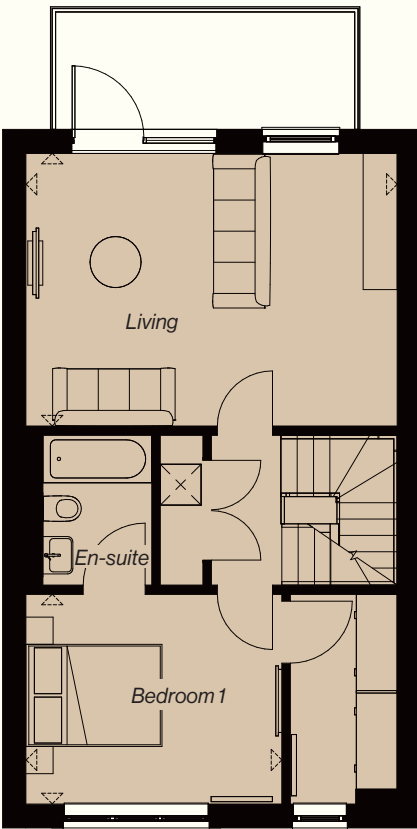
PLOT 8
EAST PRESS TOWNHOUSES



Ground Floor



Upper Floor



Middle Floor

Maximum dimensions are shown. They are intended as a guide only and are subject to change. Not all plans are to scale. Please speak to the sales advisor for further information.

**IMPRESSIVE
AND
WELCOMING**

Modern but elegant living spaces are both stylish and comfortable, with a feel of effortless luxury.

Glazed double doors open up to create a naturally light and airy environment, complemented by a neutral colour palette and finishes that provide a timeless appeal, with the opportunity to make your own mark.





TIMELESS DESIGN

Light and spacious with a flexible, open plan design, the kitchen/dining area is the perfect backdrop for sociable entertaining and relaxed family gatherings.

The classic shaker style kitchen units feature finger printless technology and elegant gold and natural stone worktops. Quality materials and premium specification offer ease and convenience.

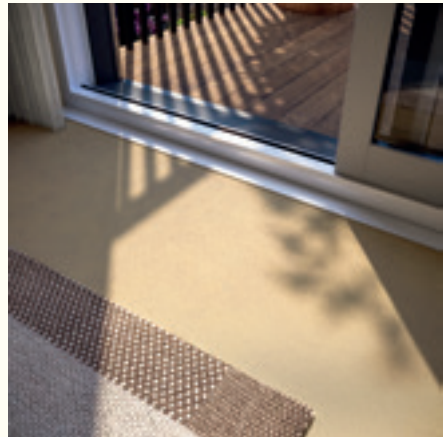
**YOUR RESTFUL
RETREAT**

Beautifully designed bedrooms provide a calm haven to escape and unwind, with the convenience of generous storage space and spa style en-suite bathrooms.

Wake to a stream of natural light afforded by expansive full height glazing. At the end of the day, return to a sumptuous, relaxing retreat with elegant décor and luxurious touches.

En-suite bathrooms to Bedrooms 1 and 2.





All images shown are computer generated.



PRESERVING THE ESSENCE OF HISTORY

The interior design of Bath Press is inspired by its historical context, blending the old and new in a thoughtful and meaningful way.

The use of gunmetal brassware is a reference to the site's history, offering a subtle yet impactful link to the past. The focus on spacious layouts and modern amenities in city living shows a commitment to comfort while respecting the need for modern convenience.

City & Country is focused on preserving the essence of the original site, ensuring that its rich history continues to be honoured while also adapting to contemporary living standards.



CLEMENTINE COLLINS,
CITY & COUNTRY INTERIOR DESIGNER



SPECIFICATION

KITCHENS

- Classic shaker style kitchen doors with finger printless technology
- Knurled gunmetal handles
- LED undermount and under plinth lighting
- Calacatta Gold quartz worktop with full height splashback and waterfall edge
- Siemens iQ700 single oven and combi microwave
- Siemens induction hob with integrated telescopic hood (plots 1-7)
- Siemens venting hob (plot 8 only)
- Siemens integrated dishwasher and fridge/freezer
- Siemens warming drawer and wine cooler
- Blanco single undermount sink with Abode single lever hot tap

BATHROOMS & EN-SUITES

- Villeroy & Boch sanitaryware

- Dornbracht Brushed Dark Platinum brassware
- Villeroy & Boch vanity unit
- Recessed mirrored cabinet with LED surround
- Single ended bath
- Tiled shower trays with gunmetal fully enclosed sliding shower screens
- Gunmetal heated towel rail
- Marble Piazza tile to bathrooms
- Travertine Bianco tile to Ensuite

INTERIOR FINISHES & FITTINGS

- Amtico flooring in Mulled Oak to hallway, kitchen and main living areas
- Carpet in Ventura Opal to bedrooms, separate living rooms, study, stairs and landing
- Full height floor and wall tiling to bathrooms and en-suites
- Coloured glass sliding door fitted wardrobes with internal lighting to principal bedrooms

- Bespoke joinery for stacked appliances to utility rooms (plots 1-7 only)

HEATING

- Underfloor heating to ground floor, radiators to other floors
- Heatmiser Neo smart thermostat

DETAILING & MATERIALS

- Four panel shaker doors
- Classic gunmetal ironmongery with matt finish

ELECTRICAL & LIGHTING

- Combination of recessed downlighters and pendant light fittings
- White finished switches and sockets throughout
- Simplisafe video door entry system
- Provision of Openreach for access to Sky or Virgin service
- Car charging point to front of each house



CHAPTER V

A PASSION FOR HERITAGE

AT CITY & COUNTRY WE ARE DEDICATED TO CONSERVING AND RESTORING BRITAIN'S UNIQUE ARCHITECTURAL HERITAGE, AS WELL AS EXPERTLY CRAFTING INSPIRING NEW PROPERTIES, CREATING SPECIAL PLACES TO BE ENJOYED TODAY AND CHERISHED BY FUTURE GENERATIONS.

CITY & COUNTRY



A REPUTATION FOR
EXCELLENCE

City & Country are proud to be a family-owned business with over 60 years’ experience in the restoration and conversion of historic and listed buildings and, more recently, the development of new homes within the grounds of historic buildings or sensitive conservation areas.

We consistently win prestigious awards for creating outstanding homes that exceed expectations in terms of innovative, sympathetic design combined with high quality and traditional craftsmanship, creating unique dwellings of exceptional quality and character.

Our commitment to our customers is just as important to us as our properties, and we are proud to have achieved a 95.5% recommendation rate and Gold Award for Customer Satisfaction 2025, by In-house Research Ltd.

A MULTI AWARD-WINNING
DEVELOPER

2024

WhatHouse? Awards

Housebuilder of the Year

Best Medium
Housebuilder

Bronze for Best
Exterior Design

UK Property Awards

Best Residential
Development – The 1840
St George’s Gardens

Best Single Apartment
– Factory No. 1 (The
Director’s Suite)

Best Apartment
Development – The 1840
St George’s Gardens

Best Residential
Development,
London – The 1840
St George’s Gardens

Best Residential
Development, Wiltshire –
Burderop Park

Best Residential
Development, Bristol –
Factory No.1

Best Single Apartment,
Bristol – Factory No.1
(The Directors Suite)

Best Residential
Development, Essex –
Manningtree Park

Evening
Standard Awards

Highly Commended
for Best Conversion
for the remarkable
transformation of The
1840 St George’s Gardens

2023

WhatHouse? Awards

Best Medium House
Builder – Silver

Best Luxury House –
Gold – Lake House, St
Osyth

Best Renovation – Gold
– The 1840 St George’s
Gardens

Best Renovation – Silver
– King Edward VII Estate

Best Renovation – Bronze
– Factory No.1

Best Exterior
Design – Bronze –
Sanderling Reach

Evening Standard New
Homes Awards

Best Out of London
Home - The Lakehouse
at St Osyth Priory

Best Conversion - The
Engine House at King
Edward VII Estate

Highly Commended for
Best Conversion - The
Kitchen Yard at The 1840
St George’s Gardens

First Time Buyer
Readers’ Awards

Best Large Development -
Factory No.1

Sussex Heritage
Trust Awards

Winner of Landscape
& Gardens and Large-
Scale Residential - King
Edward VII Estate

2022

WhatHouse? Awards

Gold Award – Best
Starter Home Scheme -
Factory No.1

Silver Award – Best
Renovation - The Playfair
at Donaldson’s

Bronze Award – Best
Renovation - King
Edward VII Estate

Bronze Award – Best
Development - The 1840
St George’s Gardens

Evening Standard New
Homes Awards

Best Apartment - The
1840 St George’s Gardens

Highly Commended for
Best Conversion - The
1840 St George’s Gardens

In-House Research 2022

Gold Award for Customer
Satisfaction

Scottish Home Awards

Renovation of the
Year - The Playfair
at Donaldson’s

2021

WhatHouse? Awards

Gold Award – Best
Apartment Scheme - The
Playfair at Donaldson’s

Gold Award – Best
Renovation - The 1840 St
George’s Gardens

In-House Research 2021

Gold Award for
Customer Satisfaction

BUILD 2021 Home
Builder Awards

Heritage Property
Development Specialists
of the Year – UK

Best Historic &
Listed Buildings
Restoration Company –
Southern England

THE CITY & COUNTRY
DIFFERENCE

City & Country is at the forefront of specialist property development, with a passionate and expert team that takes an entrepreneurial and design led approach.

Our success has been founded on an unwavering respect for and understanding of some of Britain’s most precious heritage assets, employing architectural historians and working closely with heritage specialists, local authorities and other conservationists to provide modern and stylish homes, restored sensitively to maintain their timeless look and atmosphere.

City & Country specialises in developing and enhancing high profile, sensitive sites that require original thinking. This includes the creation of high-quality new build homes within the grounds of heritage buildings, which allows us to fund the restoration of the historic assets. Our new homes are built to the same exacting standards, with the same creativity and imagination as our conversion properties.

We have a dedicated team of in-house specialists whose expertise and flair help create outstanding places to live, which perfectly blend into their unique environments. Our craftsmanship and attention to detail enables us to produce some of the finest and most immaculately finished new and conversion homes within the industry.



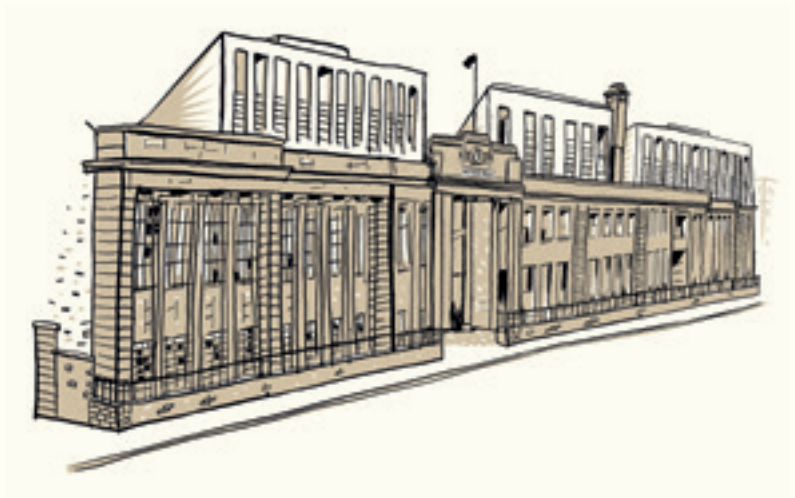
*The 1840 St George's
Gardens, London*



*Sanderling Reach,
Essex*

*Manningtree Park,
Essex*





Brought to you by

City & Country

BATH-PRESS.CO.UK

bathpress@cityandcountry.co.uk

Bath Press, Lower Bristol Road, Bath, BA2 3RP

01225 261203

CGIs are indicative only. Photography is indicative only and of other City & Country developments. Please be aware that the information contained in this document is indicative and intended to act as a guide only to the finished product and the properties available. Due to the City & Country policy of continual improvement, the finished product may vary from the information provided and City & Country reserves the right to amend the specification. The contents herein shall not form any part of any contract or be a representation including such contract. These properties are offered subject to availability. Applicants are advised to contact the appointed agents to ascertain the availability of any particular type of property. These particulars should not be relied upon as statements of fact or representation and applicants must satisfy themselves as to their correctness. Bath Press is a marketing name and does not form a part of the postal address. This development includes communal land and/or shared facilities. A management company will be set up by City & Country to ensure that these areas are continually managed to a high standard. Product related images contained within this brochure are from other City & Country developments and do not necessarily relate exactly to the specification of Bath Press.

Thank you to Visit Bath and Bath Spa for the use of their photography.

Made by GQ. gqdesign.com.

CITY & COUNTRY