



**FACTORY N01**  
BRISTOL

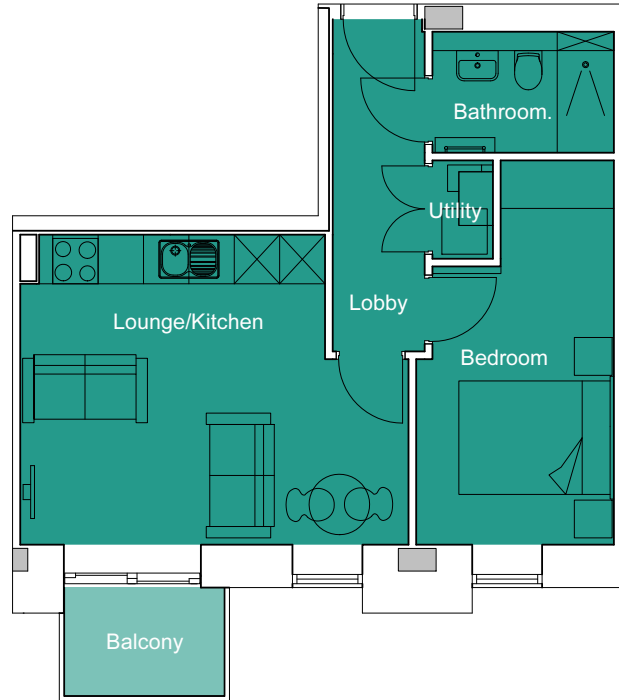
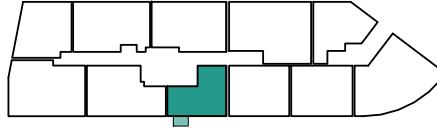
# Floorplan - Plot 4209.

1 Bedroom Apartment  
Block 4 - Second Floor

Total Internal Area: 454 ft<sup>2</sup> (42.2 m<sup>2</sup>)

Kitchen / Living / Dining	17' 0" x 13' 5"	(5.18m x 4.10m)
Bedroom 1	16' 8" x 8' 7"	(5.08m x 2.61m)
Balcony	7' 0" x 4' 11"	(2.13m x 1.49m)

Key Plan



APARTMENT PLAN  
SCALE 1:100



01174 535 155 | [factorynumber1@cityandcountry.co.uk](mailto:factorynumber1@cityandcountry.co.uk) | [www.cityandcountry.co.uk](http://www.cityandcountry.co.uk)



The information in this document is intended as a guide only and is subject to change without prior notice. Accordingly, due to the City & Country policy of continual improvement, the finished product may vary from the information provided and City & Country reserves the right to amend the specification. All dimensions stated are approximate only with maximum dimensions and may alter through the construction phase with interior finishes. You are therefore advised not to order any carpet, appliances or other goods which depend upon accurate dimensions before carrying out a check measure within your reserved property. January 2024.