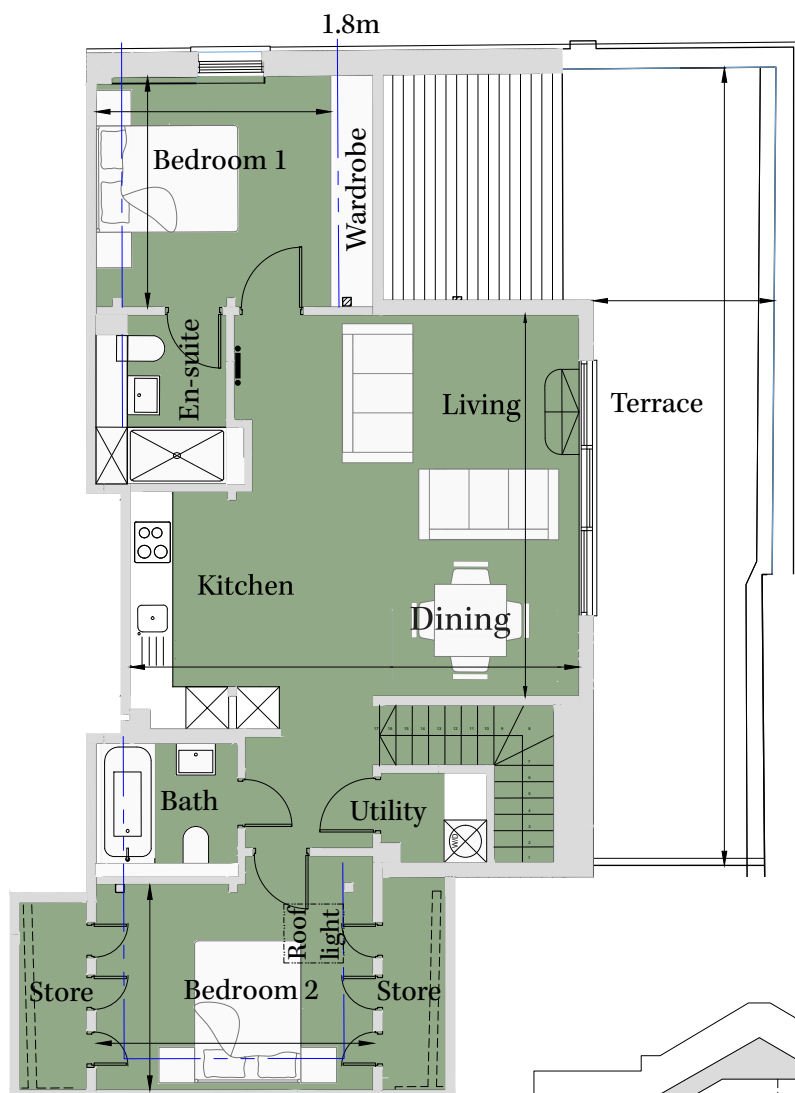


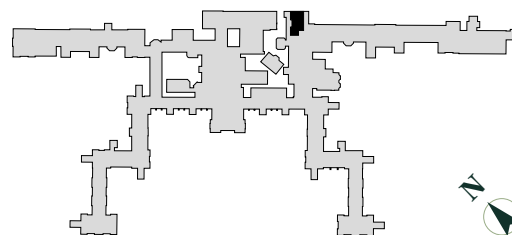
Total NSA: 845 sq ft (78.5 sq m)

Total GIA: 906 sq ft (84.2 sq m)

Kitchen/Living /Dining	20' 2" x 17' 9"	(6.14m x 5.4m)
Bedroom 1	10' 11" x 10' 3"	(3.33m x 3.13m)
Bedroom 2	12' 10" x 8' 10"	(3.90m x 2.70m)

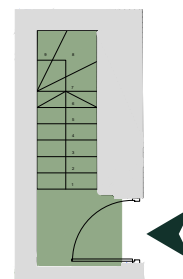


First Floor

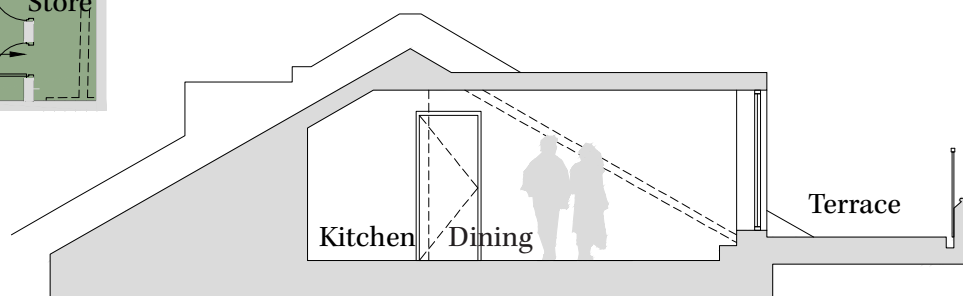


Site Location Plan

Terrace
8' 4" x 36' 11"
(2.55m x 11.23m)



Ground Floor



Section - First Floor NTS

020 3131 7006

e: the1840@cityandcountry.co.uk | w: www.cityandcountry.co.uk

CITY & COUNTRY