

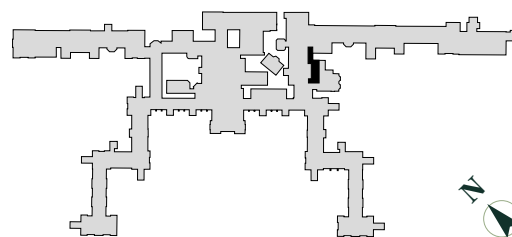
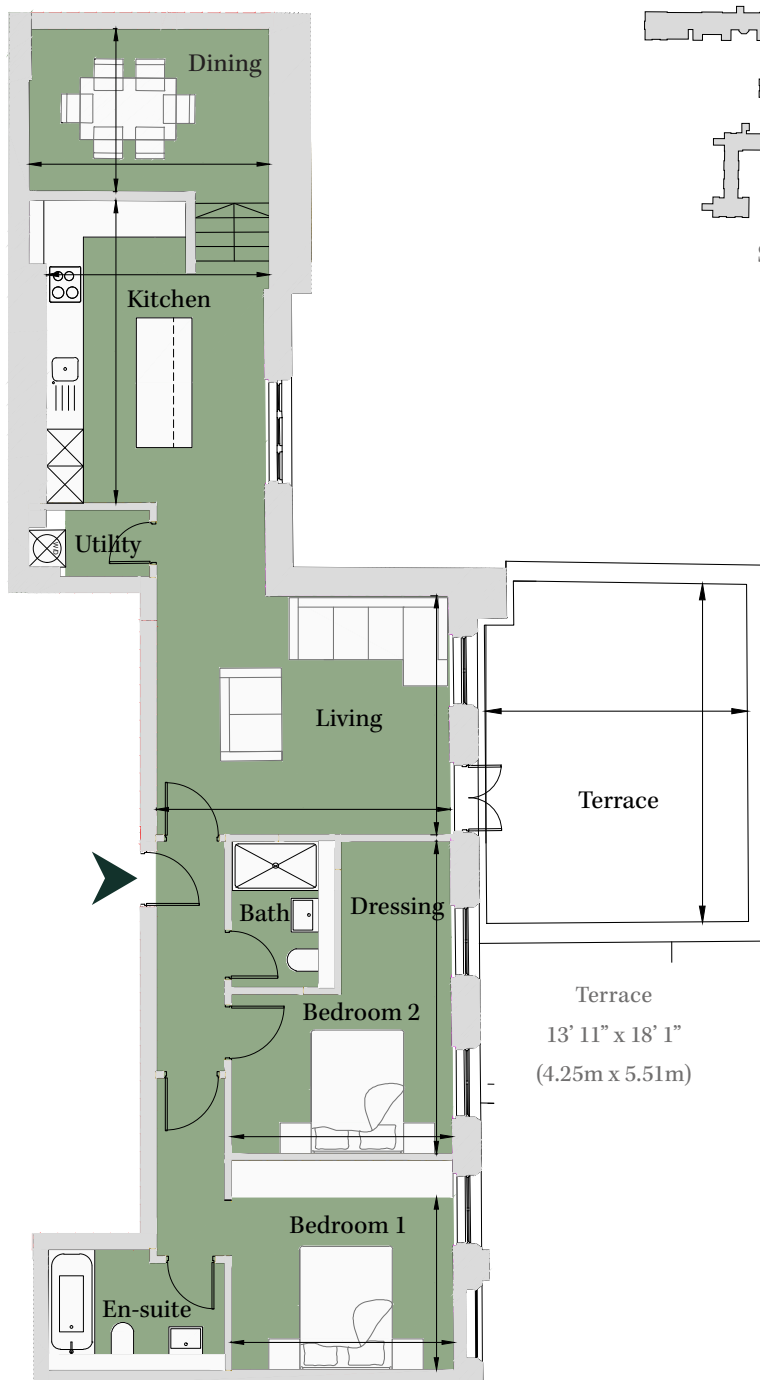
# Floorplan – Plot DR11

2 Bedroom Apartment

First Floor

Total area 1,056.6 sq ft (98.2 sq m)

Kitchen	11' 10" x 16' 1"	(3.61m x 4.90m)
Living	15' 8" x 12' 9"	(4.76m x 3.87m)
Dining	12' 10" x 8' 8"	(3.90m x 2.64m)
Bedroom 1	11' 10" x 9' 2"	(3.61m x 2.80m)
Bedroom 2	11' 9" x 16' 7"	(3.59m x 5.06m)



Site Location Plan

020 3131 7006

e: the1840@cityandcountry.co.uk | w: www.cityandcountry.co.uk

CITY & COUNTRY