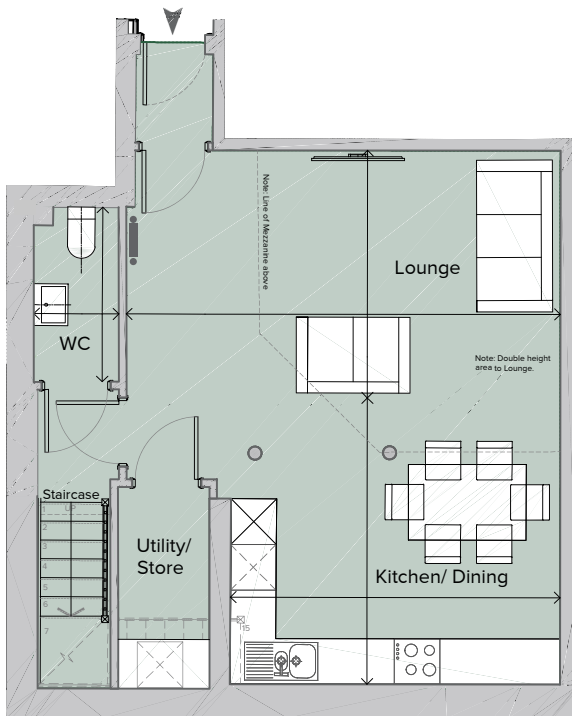
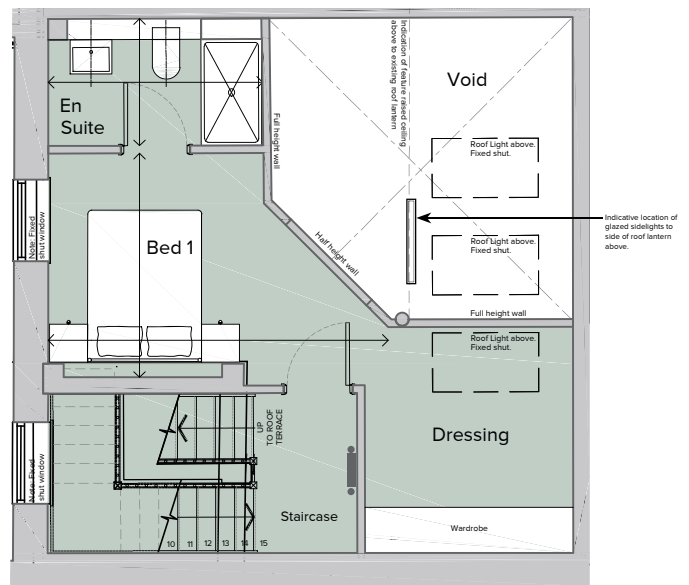


# PLOT KB12

## 1 Bedroom House



Ground Floor Plan



First Floor Mezzanine Plan

Ground/First/Second Floor  
 Total area 950.25 sq ft (88.28 sq m)

Kitchen/Dining	14' 3" x 12' 7"	(4.34m x 3.83m)
Lounge	18' 9" x 10' 8"	(5.71m x 3.26m)
Bedroom 1	9' 8" x 14' 8"	(2.95m x 4.48m)
WC	7' 7" x 3' 9"	(2.30m x 1.14m)
Ensuite	5' 6" x 9' 3"	(1.67m x 2.82m)
Terrace	21' 3" x 13' 3"	(6.49m x 4.04m)

