

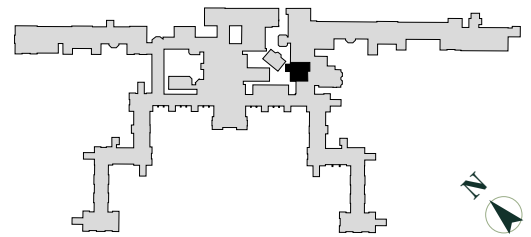
# Floorplan – Plot DR10

3 Bedroom Apartment

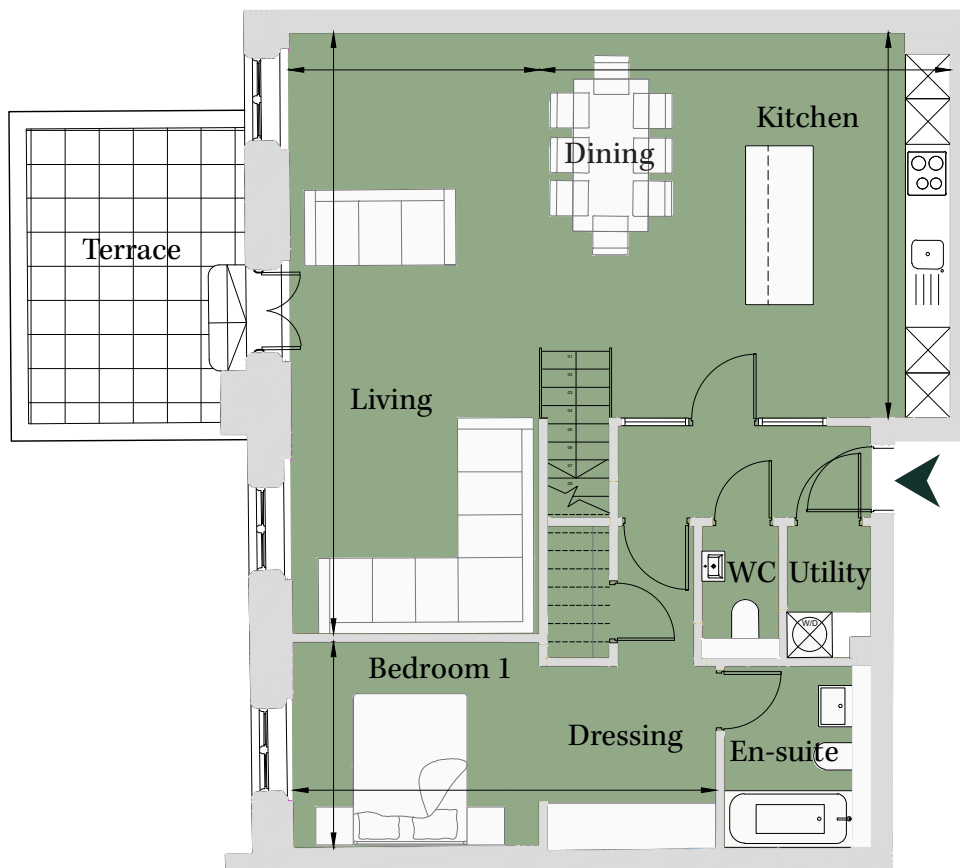
First Floor

Total area 1,580 sq ft (146.8 sq m)

Kitchen/Dining	17' 10" x 16' 9"	(5.44m x 5.10m)
Living	10' 11" x 26' 1"	(3.32m x 7.95m)
Bedroom 1	18' 4" x 9'	(5.60m x 2.73m)
Bedroom 2	12' 2" x 11' 3"	(3.70m x 3.43m)
Bedroom 3	14' 10" x 10' 3"	(4.51m x 3.11m)
Snug	12' x 9' 1"	(3.66m x 2.77m)



Site Location Plan



First Floor

020 3131 7006

e: the1840@cityandcountry.co.uk | w: www.cityandcountry.co.uk

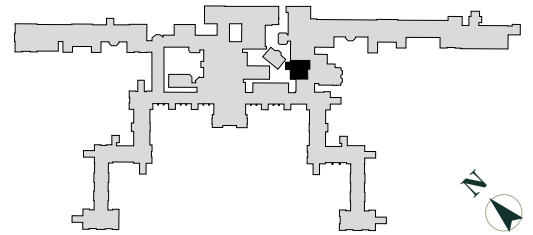
# Floorplan – Plot DR10

3 Bedroom Apartment

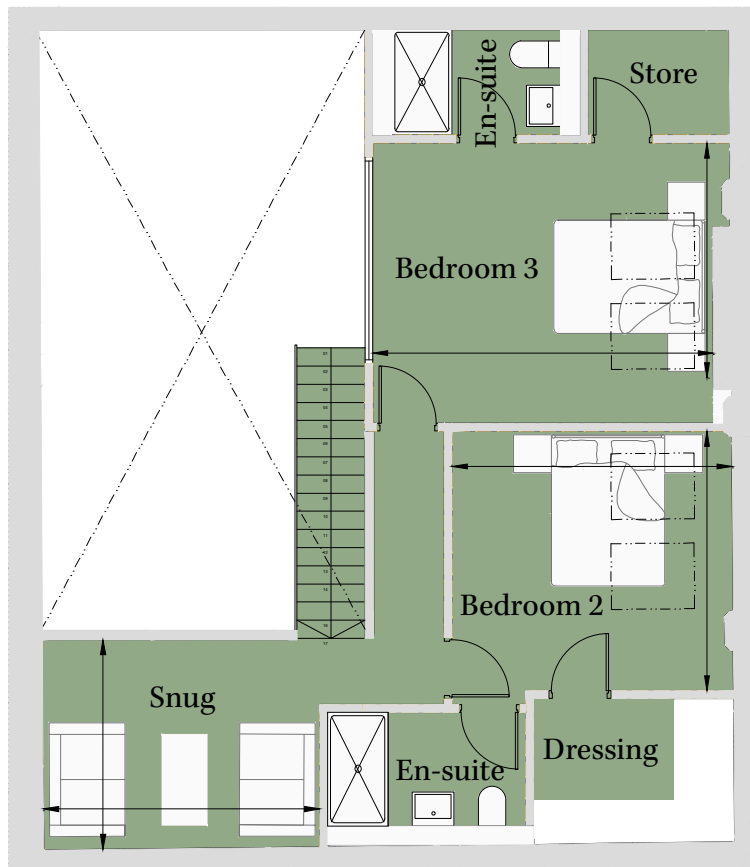
First Floor

Total area 1,580 sq ft (146.8 sq m)

Kitchen/Dining	17' 10" x 16' 9"	(5.44m x 5.10m)
Living	10' 11" x 26' 1"	(3.32m x 7.95m)
Bedroom 1	18' 4" x 9'	(5.60m x 2.73m)
Bedroom 2	12' 2" x 11' 3"	(3.70m x 3.43m)
Bedroom 3	14' 10" x 10' 3"	(4.51m x 3.11m)
Snug	12' x 9' 1"	(3.66m x 2.77m)



Site Location Plan



Second Floor

020 3131 7006

e: [the1840@cityandcountry.co.uk](mailto:the1840@cityandcountry.co.uk) | w: [www.cityandcountry.co.uk](http://www.cityandcountry.co.uk)