

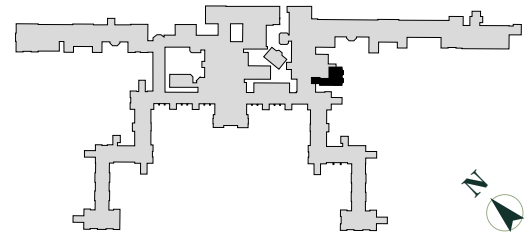
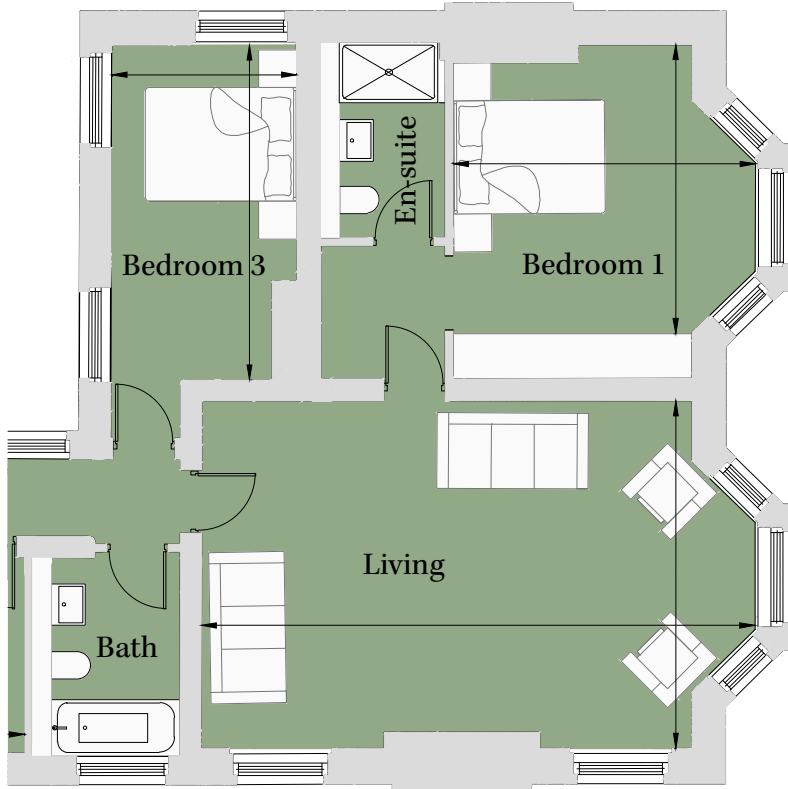
# Floorplan – Plot DR08

3 Bedroom Apartment

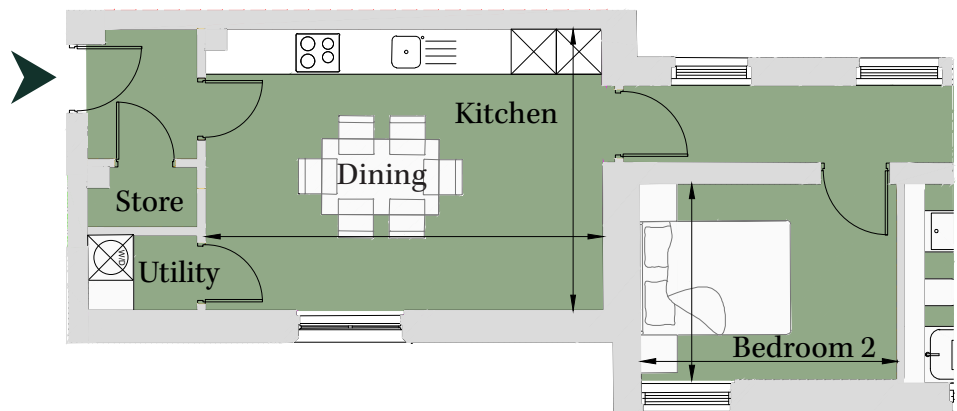
First Floor

Total area 1,290 sq ft (119.9 sq m)

Kitchen/Dining	17' 3" x 12' 2"	(5.27m x 3.72m)
Living	24' x 15' 1"	(7.32m x 4.60m)
Bedroom 1	13' 1" x 12' 7"	(3.99m x 3.82m)
Bedroom 2	11' 2" x 8' 6"	(3.40m x 2.60m)
Bedroom 3	8' x 14' 6"	(2.44m x 4.43m)



Site Location Plan



020 3131 7006

e: the1840@cityandcountry.co.uk | w: www.cityandcountry.co.uk

CITY & COUNTRY