

PLOT KB09

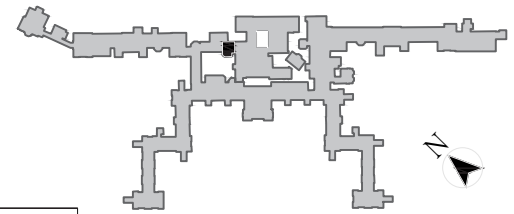
2 Bedroom Apartment

Ground Floor

Total area 794.28 sq ft (73.79 sq m)

Terrace	17' 5" x 6' 8"	(5.31m x 2.02m)
Ensuite	4' 3" x 8' 6"	(1.28m x 2.59m)
Bedroom 2	10' 6" x 10'	(3.20m x 3.05m)

Kitchen	14' x 6' 1"	(4.27m x 1.86m)
Lounge/Dining	14' x 16' 2"	(4.27m x 4.94m)
Ensuite	6' 9" x 7' 7"	(2.06m x 2.30m)
Bedroom 1	9' 3" x 23' 2"	(2.81m x 7.06m)



Plot Locator Plan

