



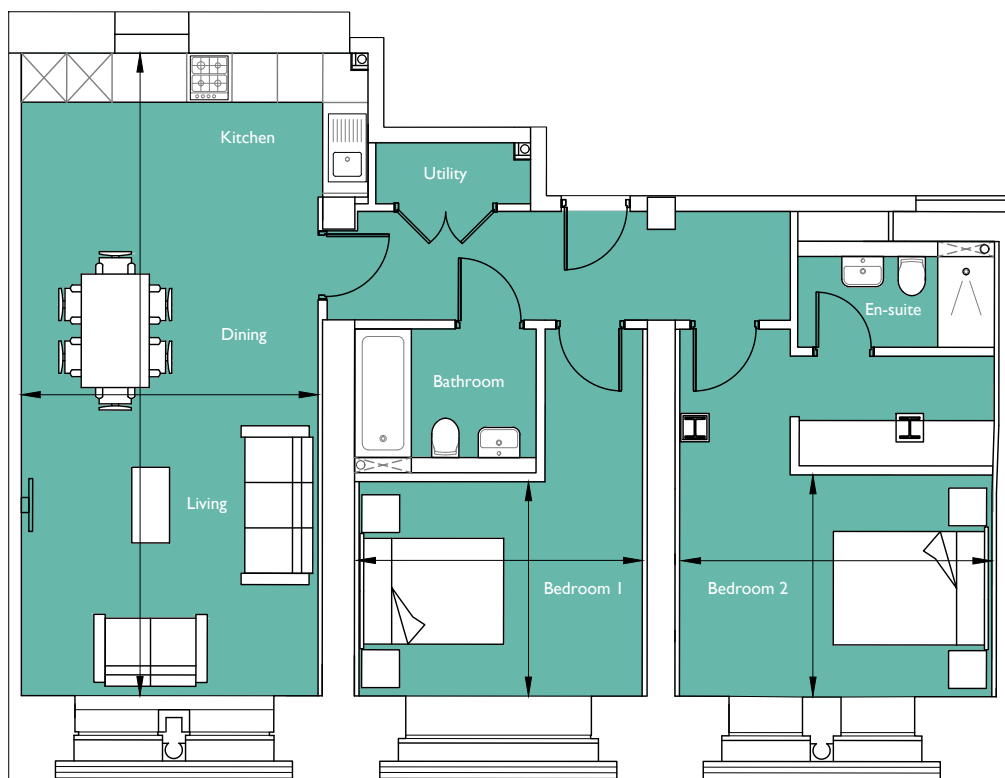
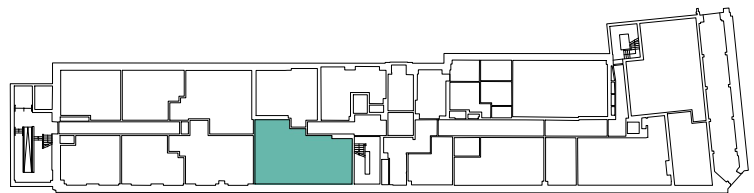
FACTORY N^o1
BRISTOL

Floorplan - Plot R006

2 Bedroom Apartment
Ground Floor - Regent House
Total area 954 sq ft (88.6 sq m)

Living/Kitchen/Dining	27' 11" x 12' 11"	(8.50m x 3.93m)
Bedroom 1	9' 3" x 12' 3"	(2.83m x 3.74m)
Bedroom 2	9' 8" x 13' 7"	(2.94m x 4.13m)

NOT TO SCALE



CITY & COUNTRY

01174 535 155 | factorynumber1@cityandcountry.co.uk | www.cityandcountry.co.uk