



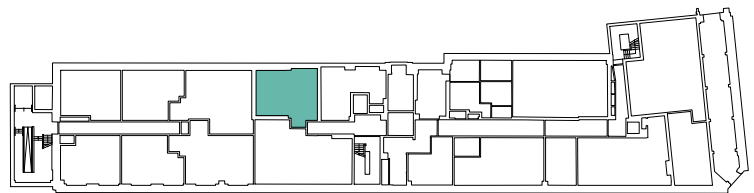
FACTORY N^o1
BRISTOL

Floorplan - Plot R004

1 Bedroom Apartment
Ground Floor - Regent House
Total area 555 sq ft (51.6 sq m)

Living/Dining/Kitchen	19' 7" x 12' 4"	(5.97m x 3.76m)
Bedroom	11' 7" x 12' 5"	(3.54m x 3.79m)

NOT TO SCALE



CITY & COUNTRY

01174 535 155 | factorynumber1@cityandcountry.co.uk | www.cityandcountry.co.uk