



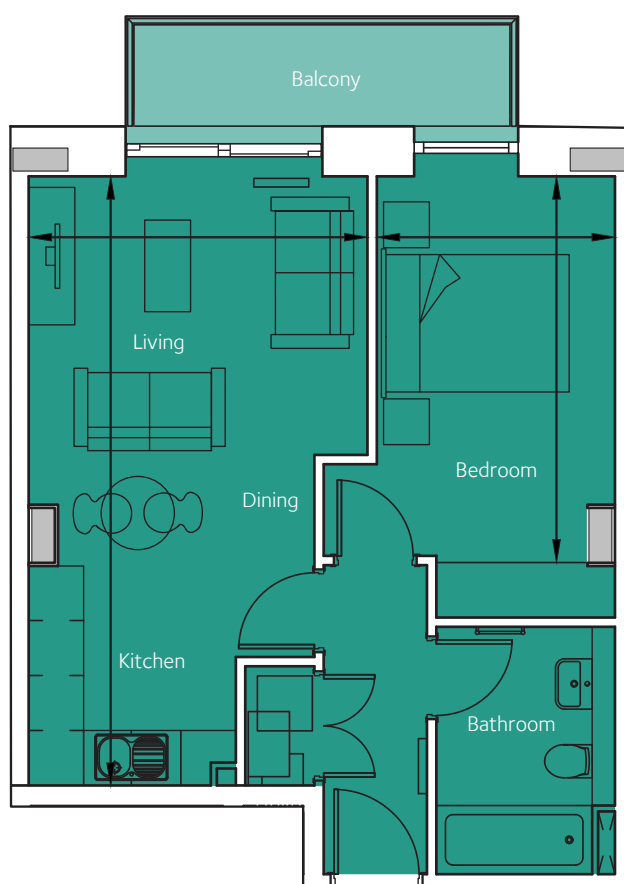
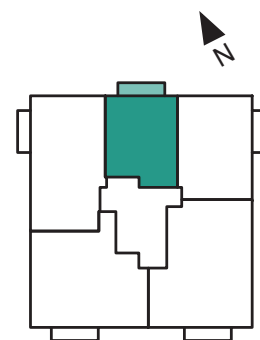
**FACTORY N01**  
BRISTOL

## Floorplan - Plot 3705

1 Bedroom Apartment  
Seventh Floor - Cutting Room  
Total area 798 sq ft (46.3 sq m)

Living/Kitchen/Dining	12' 2" x 22' 6"	(3.70m x 6.86m)
Bedroom 1	8' 6" x 14' 8"	(2.60m x 4.47m)

NOT TO SCALE



**CITY & COUNTRY**

01174 535 155 | [factorynumber1@cityandcountry.co.uk](mailto:factorynumber1@cityandcountry.co.uk) | [www.cityandcountry.co.uk](http://www.cityandcountry.co.uk)