



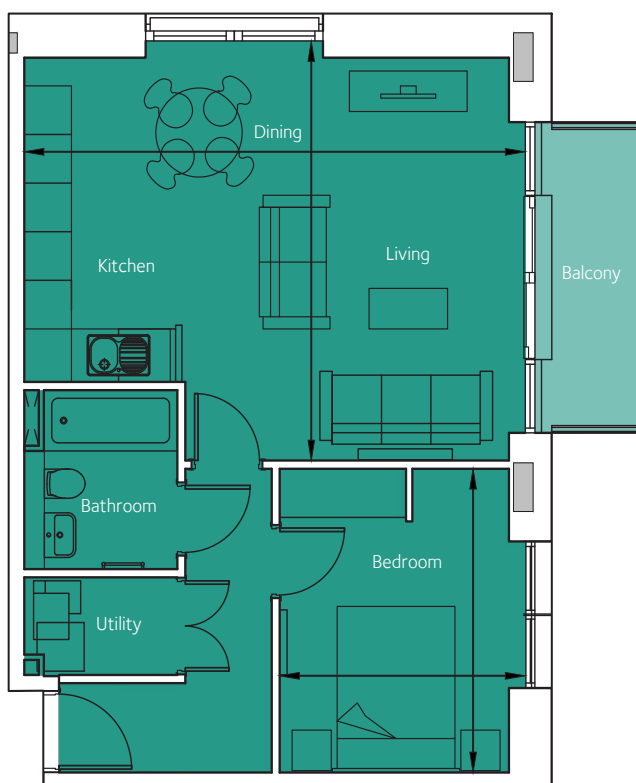
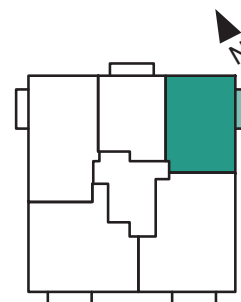
**FACTORY N01**  
BRISTOL

## Floorplan - Plot 3301

1 Bedroom Apartment  
Third Floor - Cutting Room  
Total area 594 sq ft (55.2 sq m)

Living/Kitchen/Dining	20' 11" x 16' 12"	(6.38m x 5.18m)
Bedroom 1	10' 4" x 12' 4"	(3.14m x 3.75m)

NOT TO SCALE



**CITY & COUNTRY**

01174 535 155 | [factorynumber1@cityandcountry.co.uk](mailto:factorynumber1@cityandcountry.co.uk) | [www.cityandcountry.co.uk](http://www.cityandcountry.co.uk)