



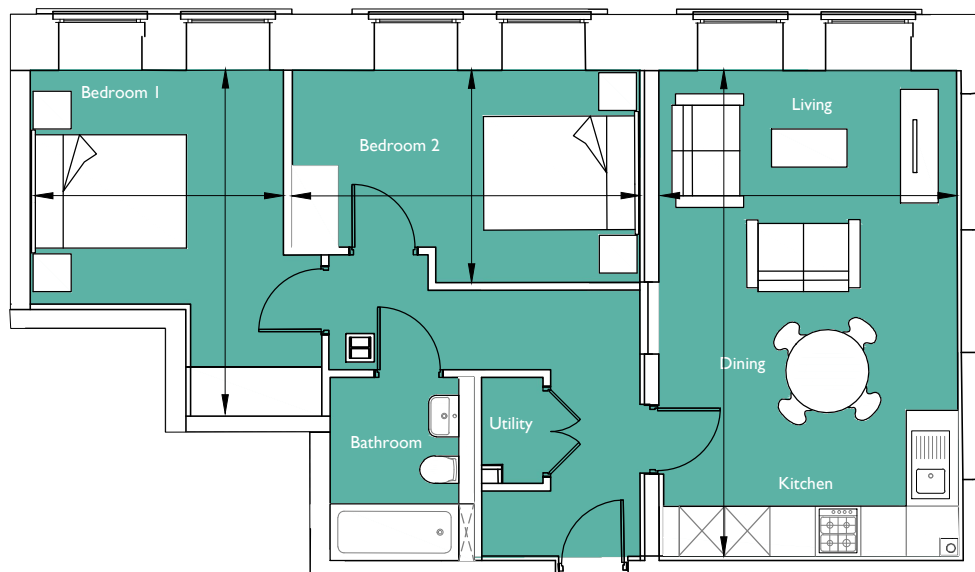
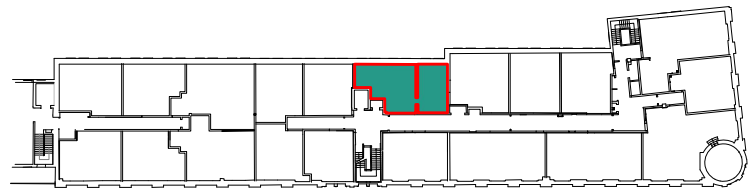
FACTORY N01
BRISTOL

Floorplan - Plot 306

2 Bedroom Apartment
Third Floor - Regent House
Total area 732 sq ft (68.0 sq m)

Living/Kitchen/Dining	21' 0" x 12' 11"	(6.42m x 3.95m)
Bedroom 1	14' 11" x 10' 11"	(4.57m x 3.35m)
Bedroom 2	9' 2" x 15' 1"	(2.80m x 4.59m)

NOT TO SCALE



CITY & COUNTRY

01174 535 155 | factorynumber1@cityandcountry.co.uk | www.cityandcountry.co.uk