

PLOT KB20  
2 Bedroom House



Kitchen	15' 11" x 7' 8"	(4.85m x 2.33m)
Lounge/Dining	23' 10" x 15' 5"	(7.27m x 4.70m)
Shower	9' 11" x 5' 5"	(3.02m x 1.65m)
Bedroom 2	8' 10" x 14' 6"	(2.68m x 4.41m)

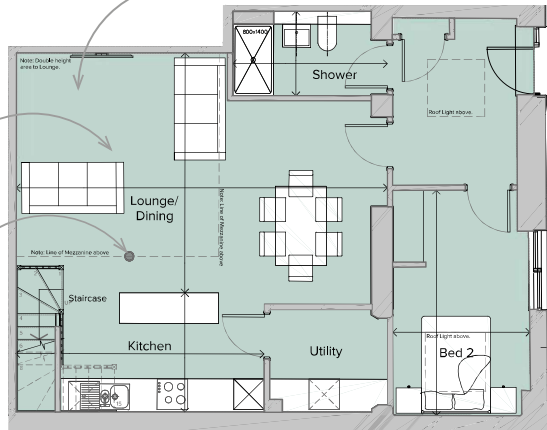
Ground/First Floor  
Total area 1172.63 sq ft (108.94 sq m)

Study	9' 4" x 9' 9"	(2.85m x 2.98m)
Bedroom 1	19' 1" x 9' 4"	(5.83m x 2.85m)
Bath	6' 5" x 9' 4"	(1.95m x 2.84m)
Terrace	25' 2" x 8' 4"	(7.67m x 2.53m)

Double height vaulted ceiling to living spaces approx 18' 5" or 5.6m increasing to 28' 2" or 8.6m to apex of lantern

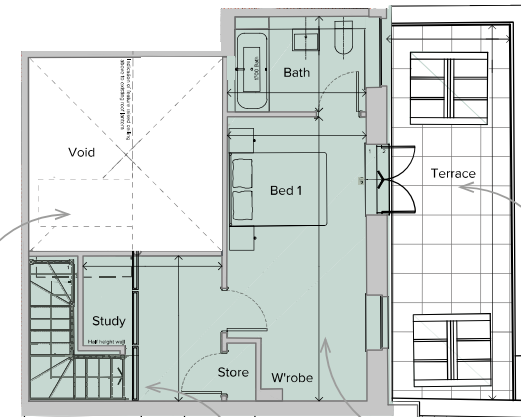
Double height area lit by high level rooflights and windows

Historic cast iron column



Ground Floor Plan

Fixed rooflight with wiring for electric blinds

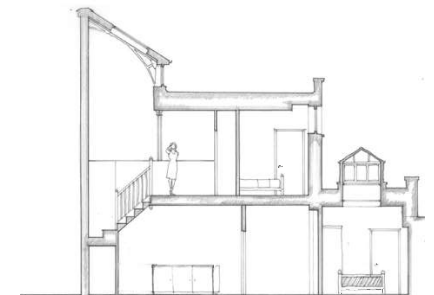


First Floor Mezzanine Plan

Private rooftop terrace looking down on mens courtyard

Approx 8' 3" or 2.5m ceiling height to bedroom 1

High level windows electronically operated with wiring for electric blinds



Artist's impression of internal elevation

Part of the original kitchen range, this house formed part of the kitchen stores which was constructed between 1898-1913. This house features a tall galleried space with roof lanterns.