

# THE DANBURY

Gross Internal Area 275 sq m | 2,965 sq ft

5 BEDROOM DETACHED HOME

PLOT 73



Computer generated image of plot 73 is indicative only

## GROUND FLOOR

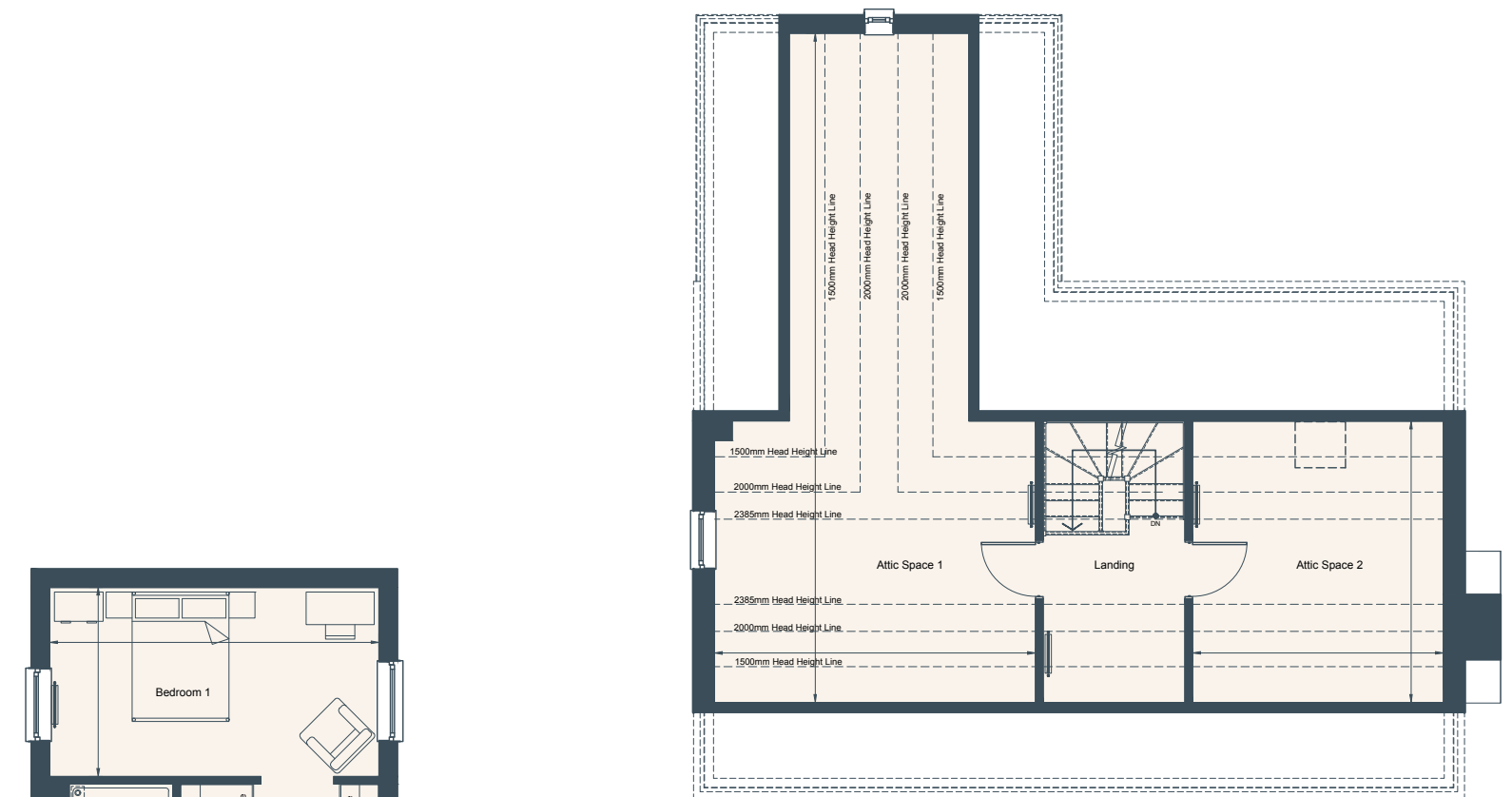
Living Room	7.34m x 3.86m	24'1" x 12'8"
Dining Room	4.95m x 2.70m	16'3" x 8'10"
Kitchen/Dining/Family	6.61m x 5.09m	21'8" x 16'9"

## FIRST FLOOR

Bedroom 1	5.09m x 2.93m	16'9" x 9'7"
Bedroom 2	3.88m x 3.39m	12'9" x 11'1"
Bedroom 3	3.84m x 2.75m	12'7" x 9'0"
Bedroom 4	4.74m x 2.59m	15'7" x 8'6"
Bedroom 5	3.55m x 2.95m	11'8" x 9'8"

## SECOND FLOOR

Attic Space 1	10.35m x 4.97m	33'11" x 16'4"
Attic Space 2	4.35m x 3.88m	14'3" x 12'9"



SECOND FLOOR



FIRST FLOOR



GROUND FLOOR



The information in this document is intended as a guide only and is subject to change without prior notice. Accordingly, due to the City & Country policy of continual improvement, the finished product may vary from the information provided and City & Country reserves the right to amend the specification. All dimensions stated are approximate only with maximum dimensions and may alter through the construction phase with interior finishes. You are therefore advised not to order any carpets, appliances or other goods which depend upon accurate dimensions before carrying out a check measure within your reserved property. Floorplans not to scale. October 2022.