



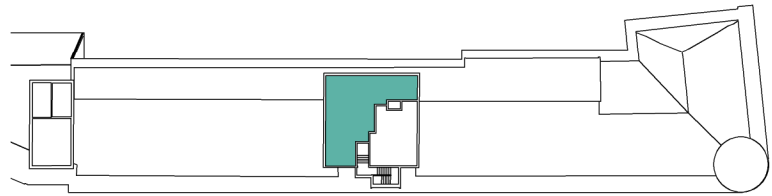
FACTORY N01
BRISTOL

Floorplan - Plot R401

2 Bedroom Apartment
Fourth Floor - Regent House
Total area 840 sq ft (78.1 sq m)

Kitchen/Living/Dining	22' 8" x 16' 8"	(6.95m x 5.13m)
Bedroom 1	10' 4" x 19' 8"	(3.15m x 6.04m)
Bedroom 2	8' 1" x 11' 1"	(2.47m x 3.63m)
Terrace	13' 1" x 11' 5"	(4.00m x 3.50m)

NOT TO SCALE



CITY & COUNTRY

01174 535 155 | factorynumber1@cityandcountry.co.uk | www.cityandcountry.co.uk