



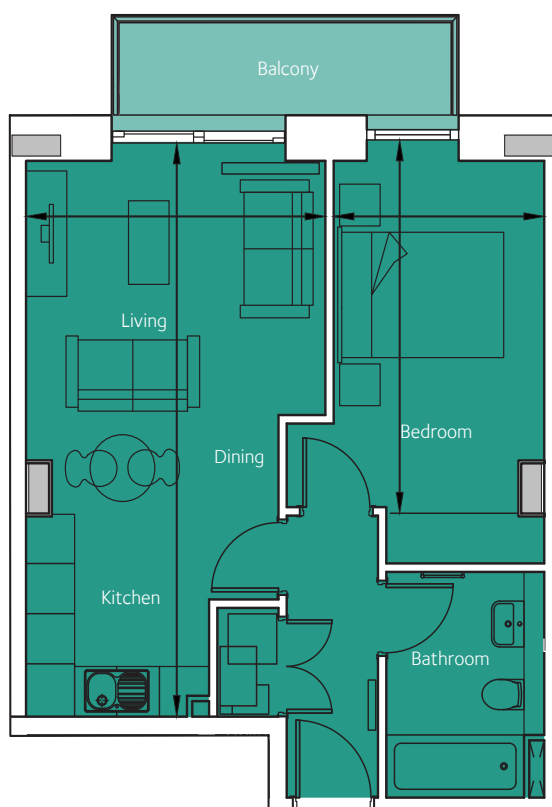
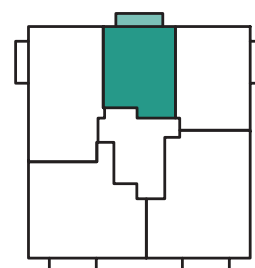
FACTORY N01
BRISTOL

Floorplan - Plot 3505

1 Bedroom Apartment
Fifth Floor – Cutting Room
Total area 505 sq ft (47.0 sq m)

Living/Kitchen/Dining	21' 2" x 12' 6"	(6.70m x 5.86m)
Bedroom 1	8' 6" x 14' 8"	(2.60m x 4.47m)

NOT TO SCALE



CITY & COUNTRY

01174 535 155 | factorynumber1@cityandcountry.co.uk | www.cityandcountry.co.uk