



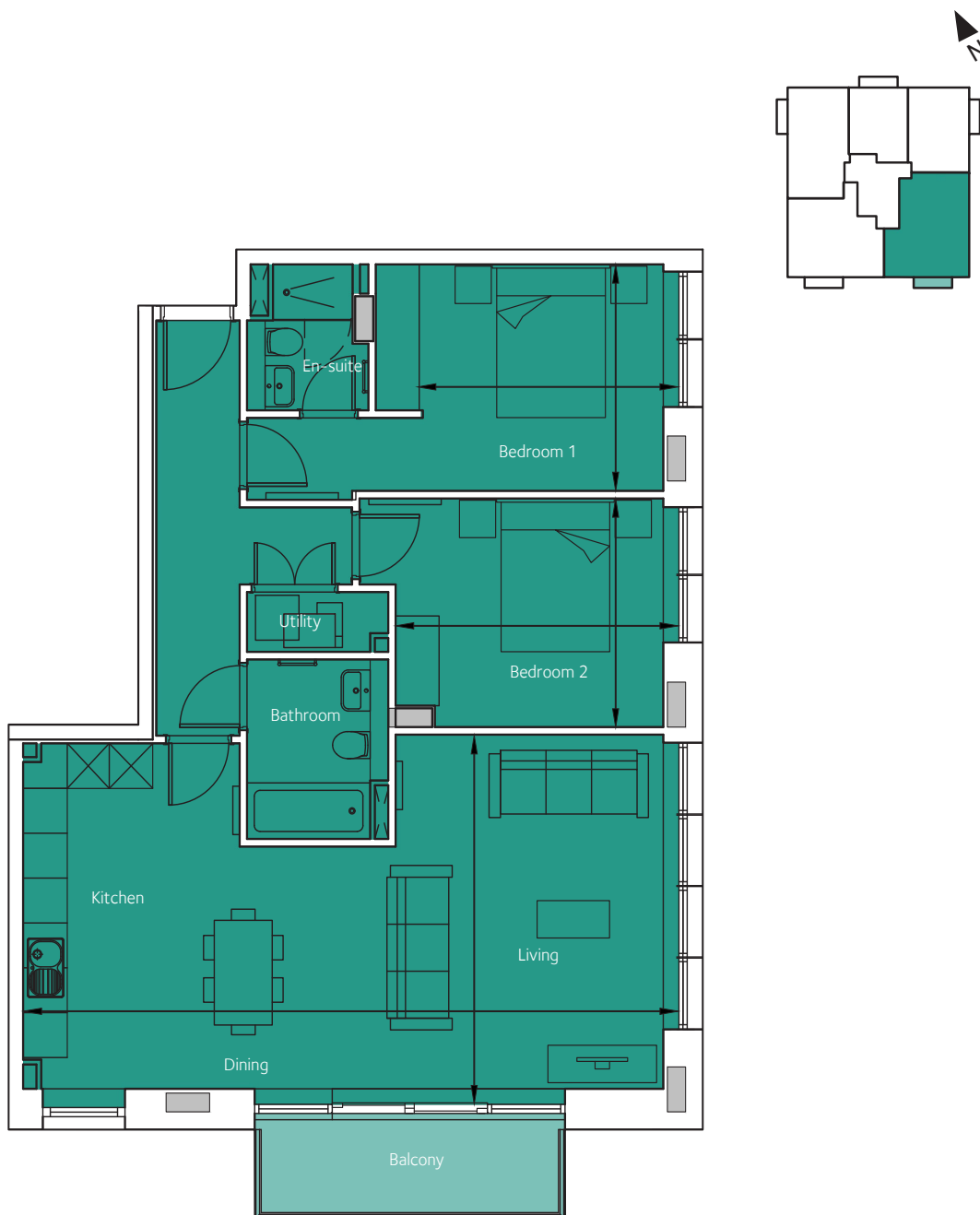
FACTORY N°1
BRISTOL

Floorplan - Plot 3402

2 Bedroom Apartment
Fourth Floor - Cutting Room
Total area 935 sq ft (86.9 sq m)

Living/Kitchen/Dining	29' 9" x 16' 2"	(9.06m x 4.94m)
Bedroom 1	10' 9" x 9' 11"	(3.59m x 3.03m)
Bedroom 2	12' 10" x 10' 0"	(3.91m x 3.06m)

NOT TO SCALE



CITY & COUNTRY

01174 535 155 | factorynumber1@cityandcountry.co.uk | www.cityandcountry.co.uk