

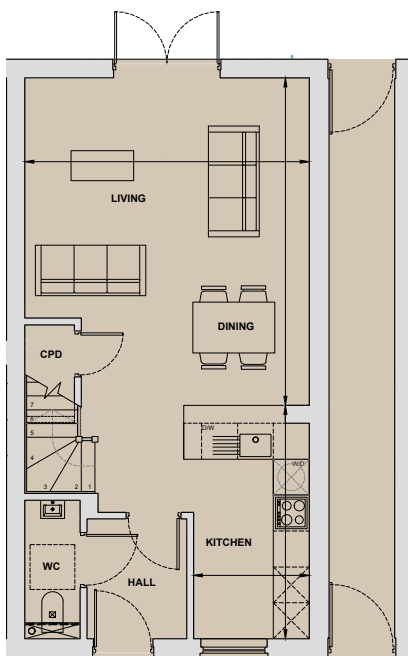
# Sallow

2 Bedroom Home

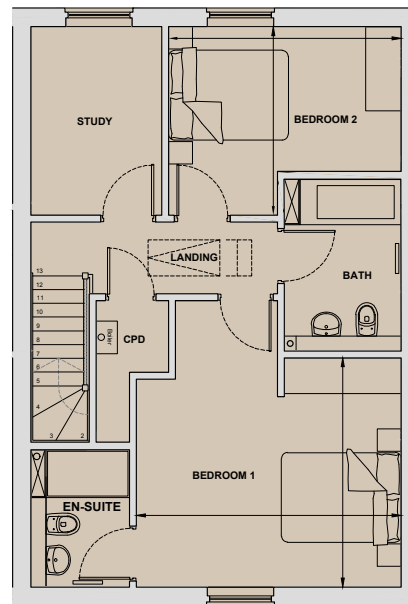
Plots 9 & 12\*

Living/Dining	4.75m x 5.47m	15'7" x 17'11"
Kitchen	1.93m x 3.90m	6'4" x 12'10"
Bedroom 1	4.42m x 3.83m	14'6" x 12'7"
Bedroom 2	3.88m x 3.15m	12'9" x 10'4"
Study	2.18m x 3.15m	7'2" x 10'4"
<b>Total Internal Area</b>	<b>102.6 sq m</b>	<b>1,104 sq ft</b>

\*Handed to floorplan shown



Ground Floor



First Floor