

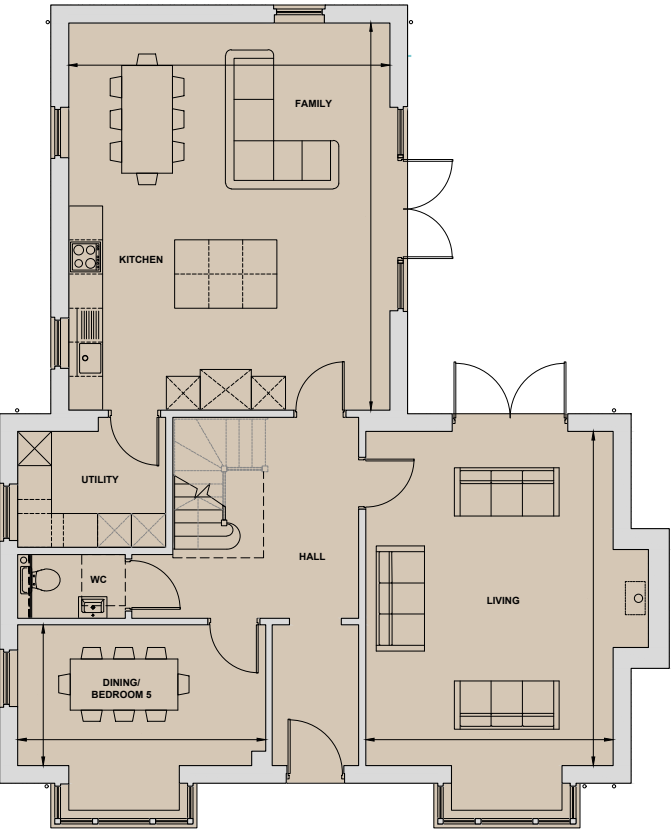
Rowan

4/5 Bedroom Home
Plot 28, 32*, 33* & 34

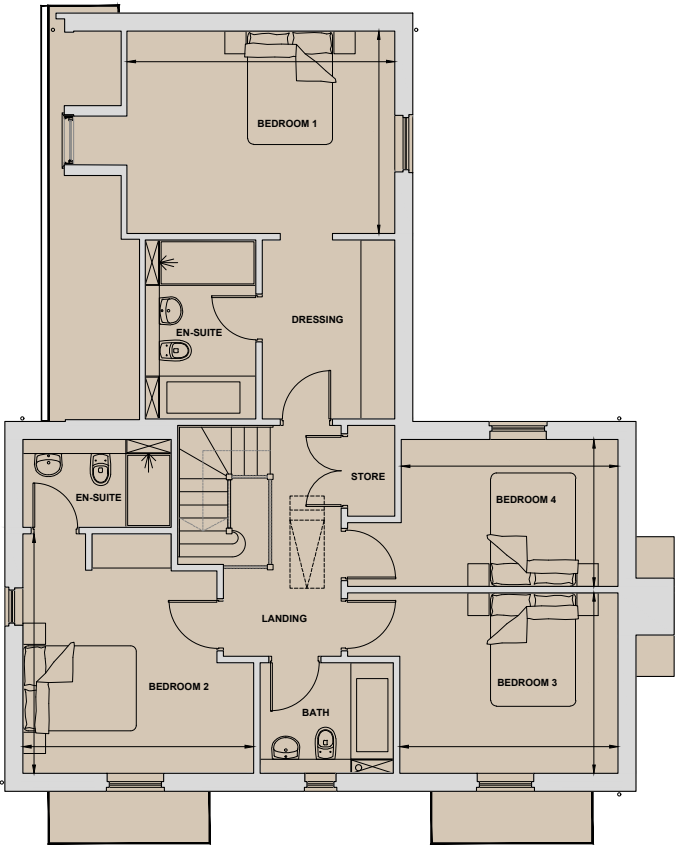
Living	4.36m x 5.89m	14'4" x 19'4"
Kitchen/Family	5.66m x 6.83m	18'7" x 22'5"
Dining/Bedroom 5	4.37m x 2.48m	14'4" x 8'2"
Bedroom 1	4.73m x 3.57m	15'6" x 11'9"
Bedroom 2	4.07m x 4.22m	13'4" x 13'10"
Bedroom 3	3.85m x 3.18m	12'8" x 10'5"
Bedroom 4	3.82m x 2.59m	12'7" x 8'6"
Total Internal Area	201.1 sq m	2,165 sq ft



*Handed to floorplan shown



Ground Floor



First Floor