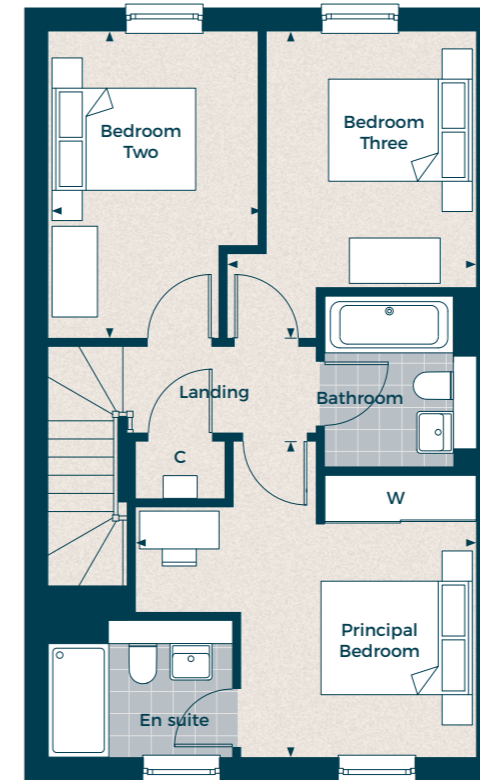


The Rowley (II)

Three bedroom end-terrace home

Plots 46*, 54* & 82*

Gross Internal Area: 108.52 sq m (1,168.09 sq ft)

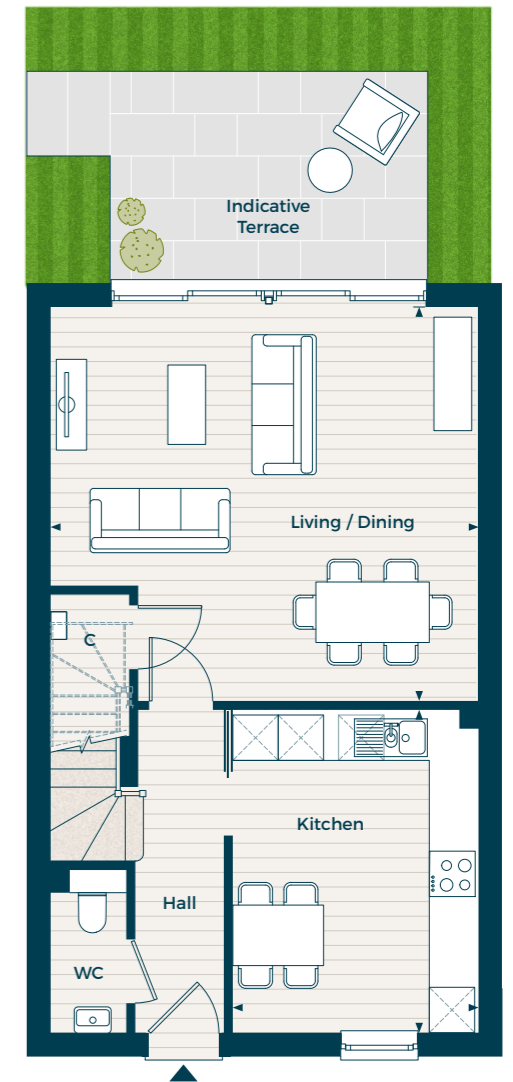


First Floor

Principal Bedroom
4.50m x 4.17m 14' 9" x 13' 8"

Bedroom 2
4.05m x 2.77m 13' 4" x 9' 1"

Bedroom 3
4.05m x 3.29m 13' 4" x 10' 09"



Ground Floor

Living / Dining
5.66m x 5.21m 18' 7" x 17' 1"

Kitchen
4.27m x 3.25m 14' 0" x 10' 8"

Key:

C - Cupboard W - Built-in Wardrobe ▲ - Front Entrance ◀▶ - Depicts where measurements have been taken from

* Denotes handed plot. Individual plots vary in size, please ask the Sales Consultant for details.

Computer generated images are indicative only. Floor plans shown are indicative only. To increase legibility these plans have been sized to fit the page and as a result may be of a different scale to others within this document. Location of windows, doors, wardrobes, kitchen units, appliance spaces and bathroom fittings may differ. Garden and Terrace is indicative only. All measurements may vary within a tolerance of 5%. The dimensions are not intended to be used for carpet sizes, appliance sizes or items of furniture.