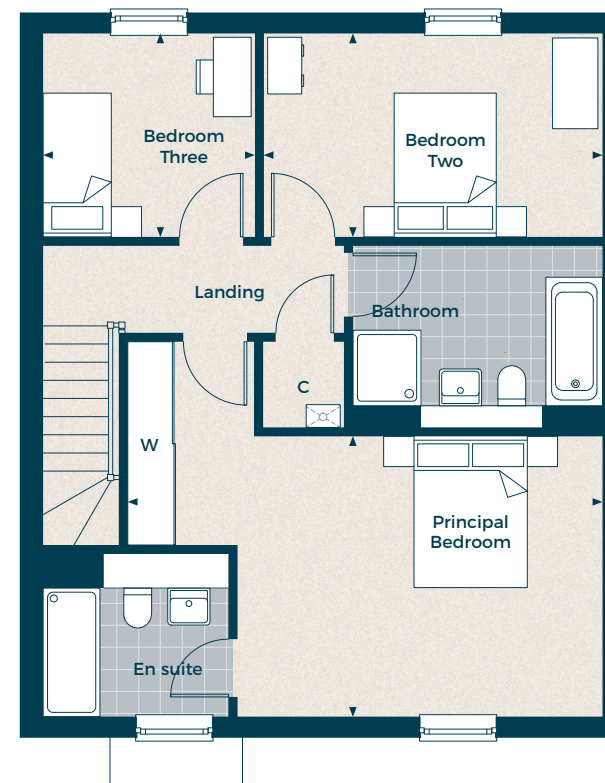


# The Oak (II) OPEN PLAN

Three bedroom terrace home

Plot 85

Gross Internal Area: 114.6 sq m (1,233 sq ft)

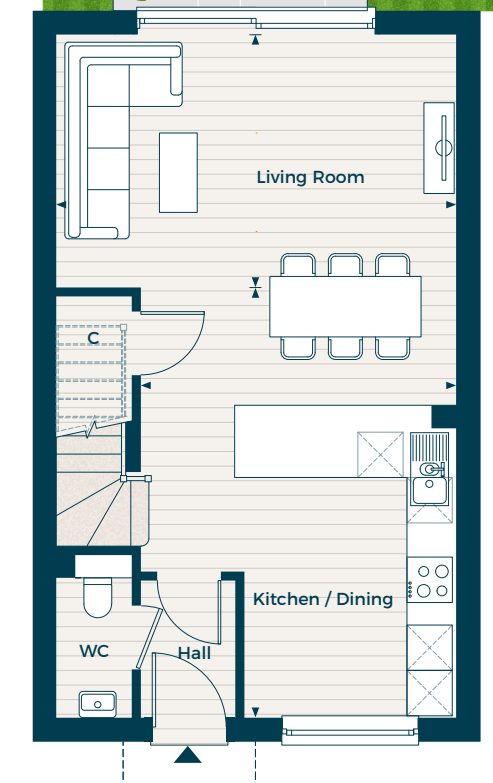


## First Floor

**Principal Bedroom**  
6.28m x 3.70m 20' 7" x 12' 2"

**Bedroom 2**  
4.48m x 2.69m 14' 8" x 8' 10"

**Bedroom 3**  
2.69m x 2.80m 8' 10" x 9' 2"



## Ground Floor

**Living Room**  
5.29m x 3.34m 17' 4" x 11' 0"

**Kitchen / Dining**  
5.69m x 4.17m 18' 8" x 13' 8"

### Key:

C - Cupboard W - Built-in Wardrobe ▲ - Front Entrance ◀▶ - Depicts where measurements have been taken from

Individual plots vary in size, please ask the Sales Consultant for details.

Computer generated image is indicative only. Floor plans shown are indicative only. To increase legibility these plans have been sized to fit the page and as a result may be of a different scale to others within this document. Location of windows, doors, wardrobes, kitchen units, appliance spaces and bathroom fittings may differ. Garden and Terrace is indicative only. All measurements may vary within a tolerance of 5%. The dimensions are not intended to be used for carpet sizes, appliance sizes or items of furniture.