



MANNINGTREE — PARK —

Coastal and Country Living at its Finest



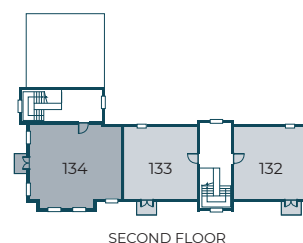
BLOCK C APARTMENT FLOORPLANS

CITY & COUNTRY

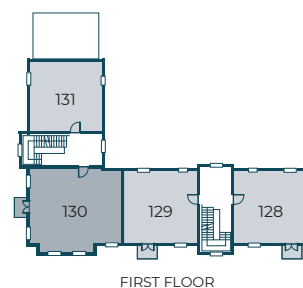
Site plan



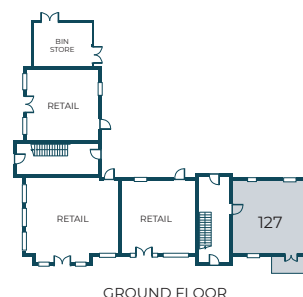
PLOT	BEDROOM	FLOOR	SQ M	SQ FT
127	1 bedroom apartment	Ground floor	51.33	552'51"



128	1 bedroom apartment	First floor	51.33	552'51"
129	1 bedroom apartment	First floor	51.33	552'51"
130	1 Bedroom apartment	First floor	70.80	762'08"
131	1 bedroom apartment	First floor	48.34	520'32"

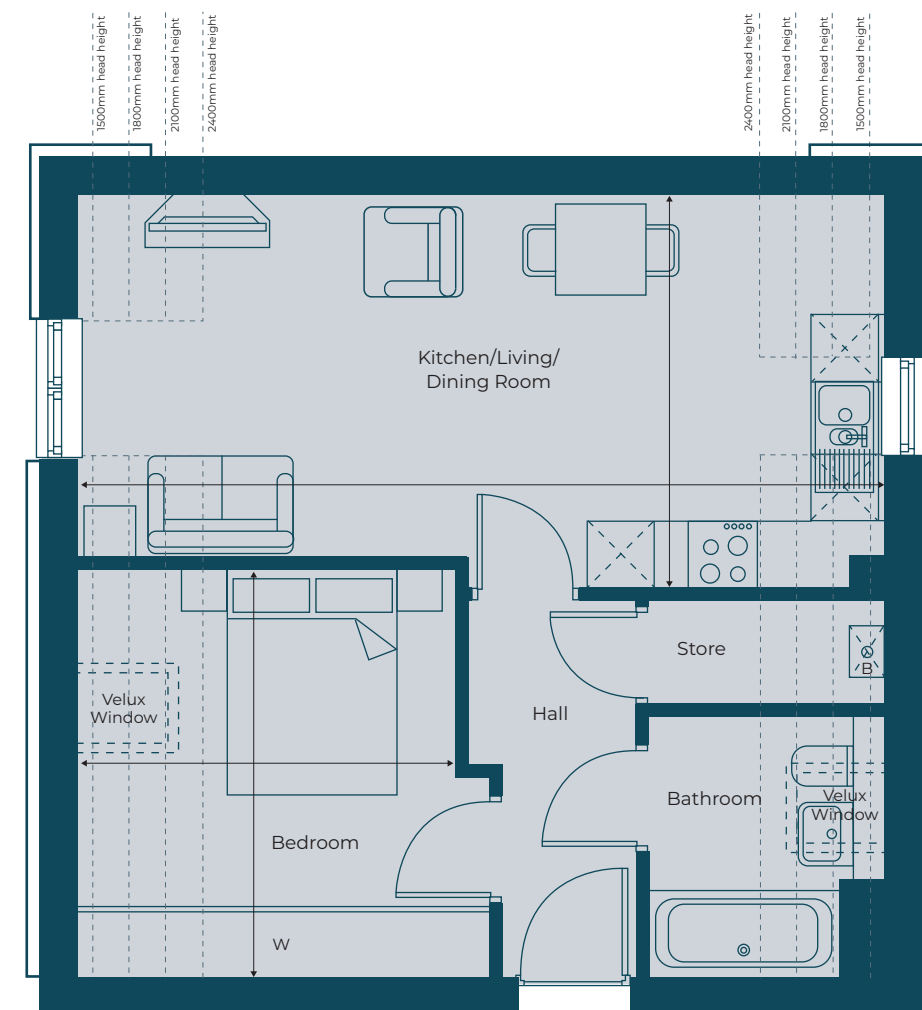


132	2 bedroom apartment	Second floor	48.34	520'32"
133	2 bedroom apartment	Second floor	48.34	520'32"
134	2 bedroom apartment	Second floor	70.80	762'08"



Type C1

FIRST FLOOR 1 bedroom apartment: Plot 131



KITCHEN/LIVING/DINING ROOM

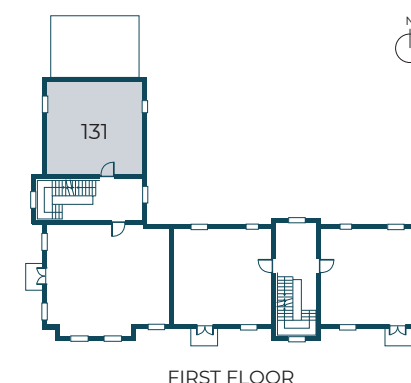
7.10m x 3.47m 23'3" x 11'5"

BEDROOM

3.64m x 3.60m 11'11" x 11'10"

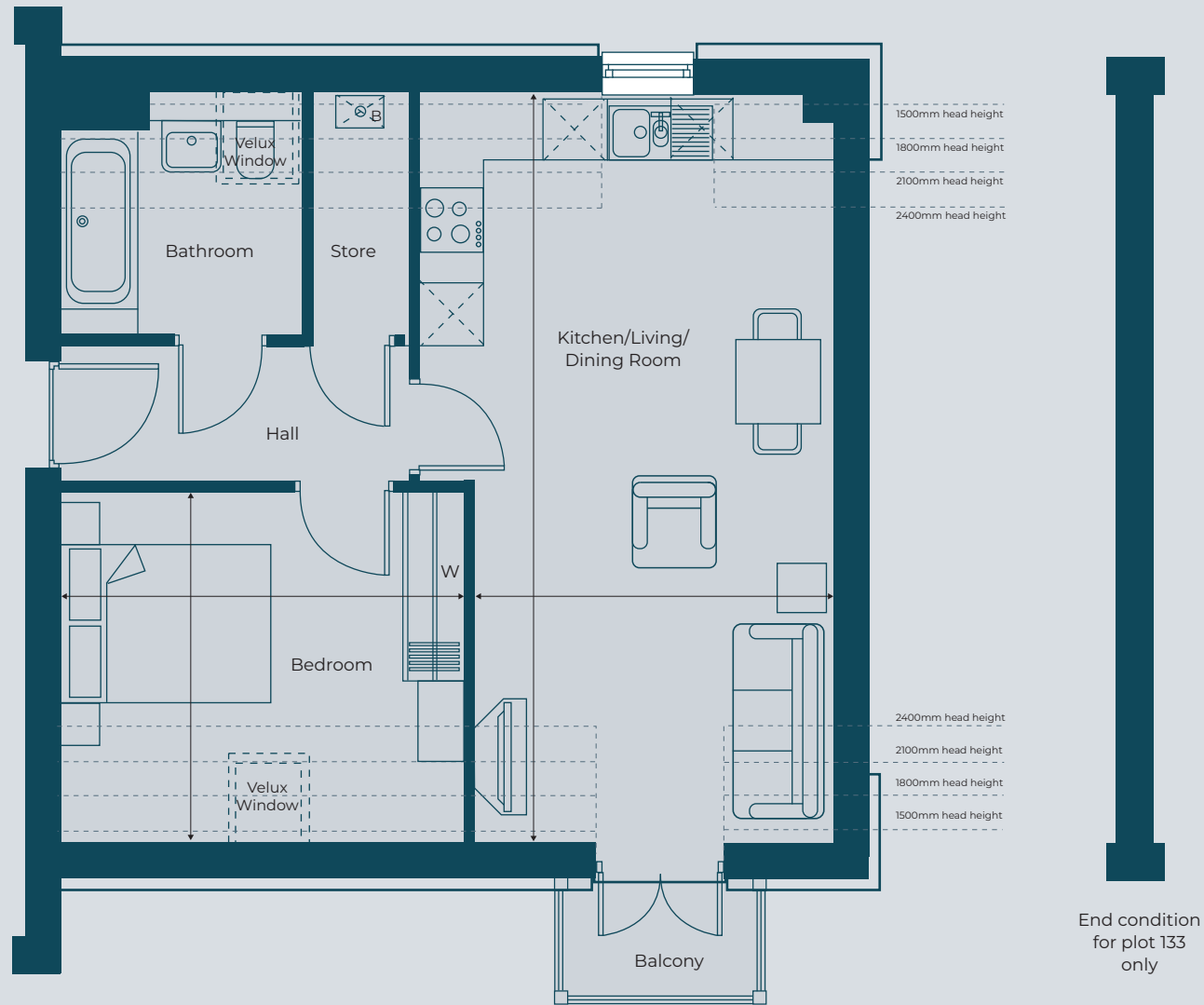
TOTAL INTERNAL AREA

48.34m² 520 ft²

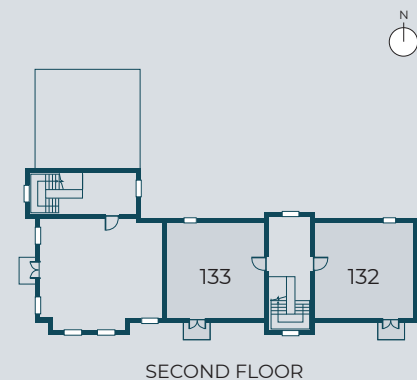


Type C2

SECOND FLOOR
1 bedroom apartment: Plots 132 & 133* (*handed)



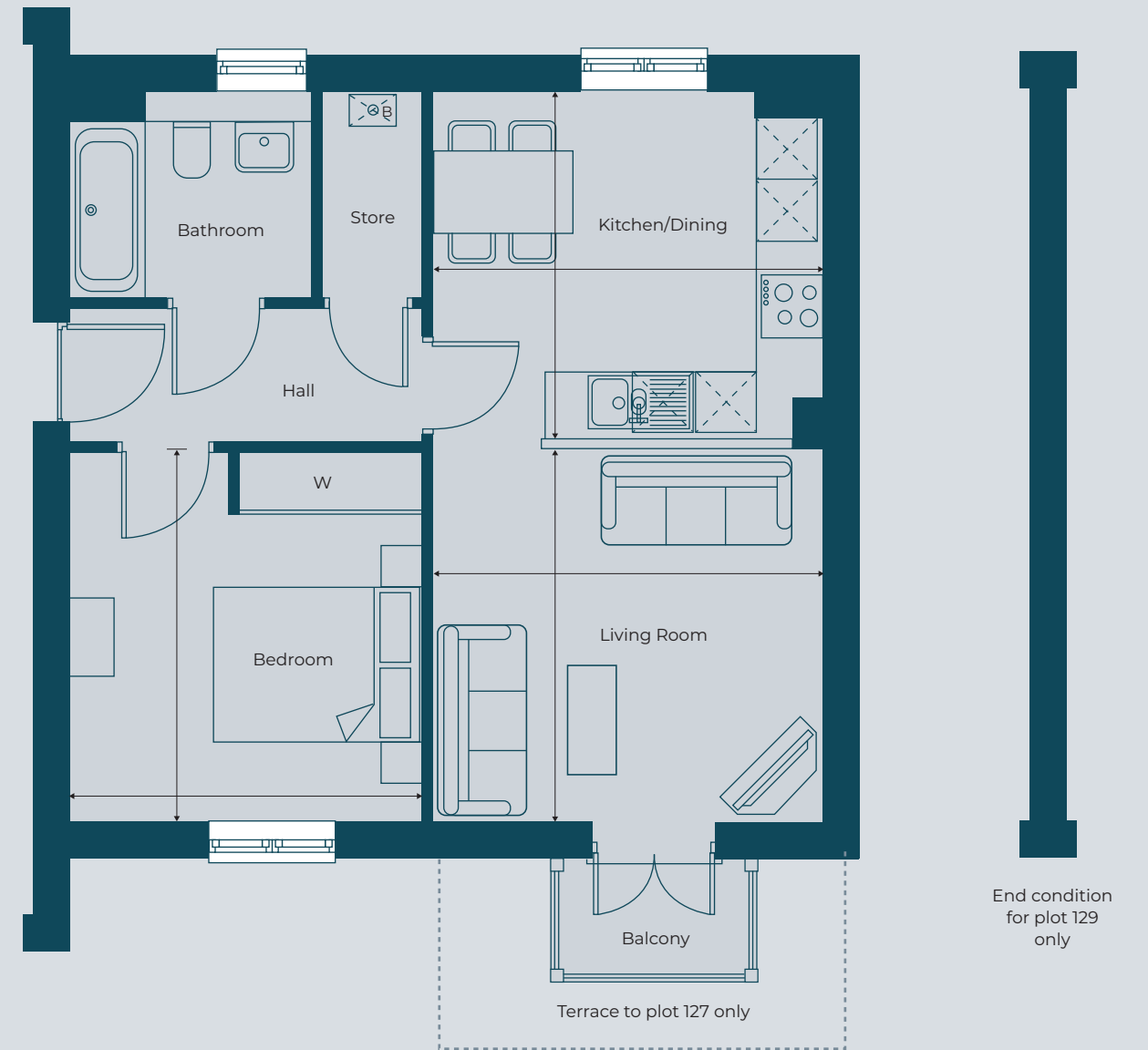
KITCHEN/DINING/LIVING ROOM		
7.10m x 3.39m	23' 3" x 11' 1"	
BEDROOM		
3.84m x 3.33m	12' 7" x 10' 11"	
TOTAL INTERNAL AREA		
51.51m ²	554 ft ²	



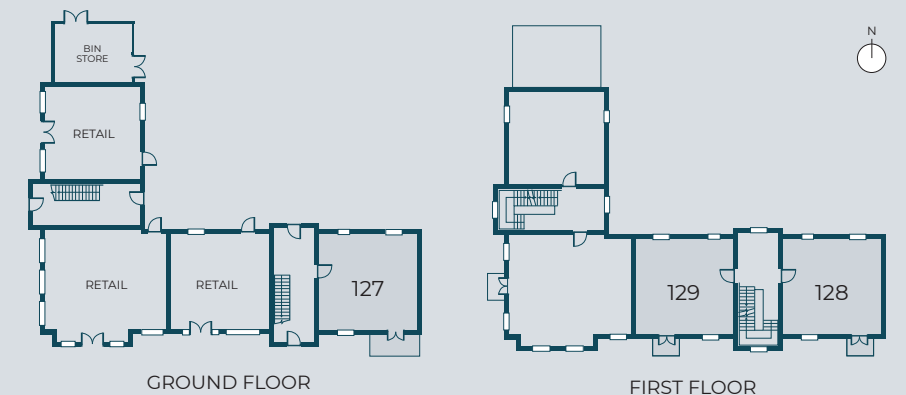
SECOND FLOOR

Type A & A1

GROUND AND FIRST FLOOR
1 bedroom apartment: Plots 127, 128 & 129* (*handed)



LIVING ROOM		
3.79m x 3.62m	12' 5" x 11' 10"	
KITCHEN/DINING		
3.79m x 3.39m	12' 5" x 11' 1"	
BEDROOM		
3.59m x 3.43m	11' 9" x 11' 3"	
TOTAL INTERNAL AREA		
51.33m ²	552 ft ²	

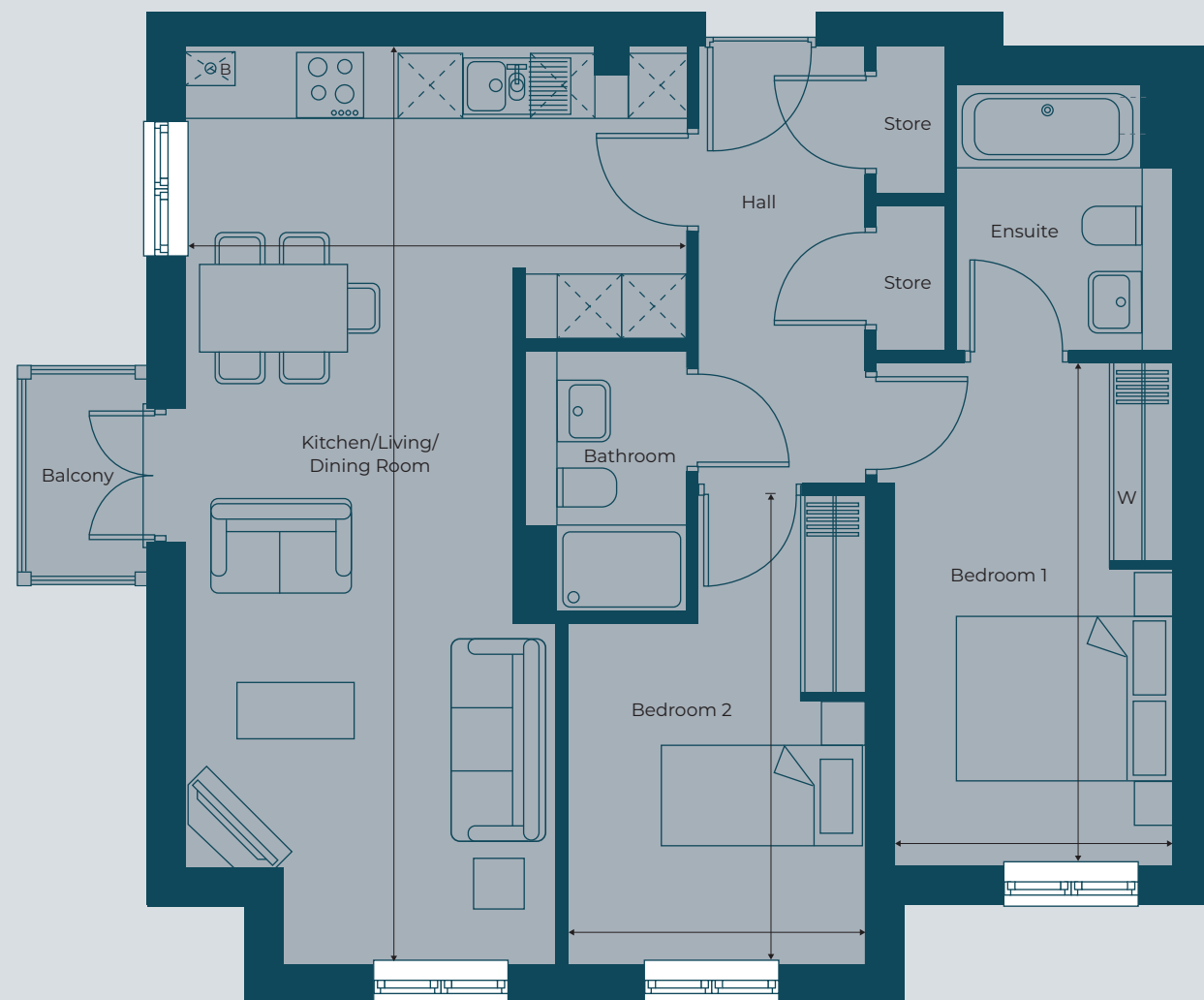


GROUND FLOOR

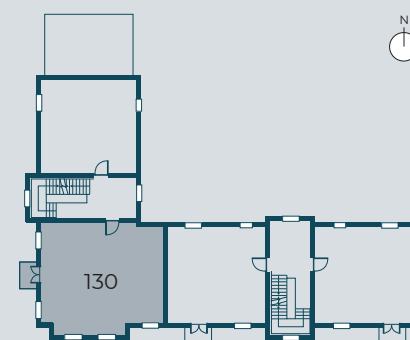
FIRST FLOOR

Type B1

FIRST FLOOR
2 bedroom apartment: Plot 130



KITCHEN/LIVING/DINING ROOM		
8.34m x 4.58m	27' 4" x 15' 0"	
BEDROOM 1		
4.58m x 2.27m	15' 0" x 8' 11"	
BEDROOM 2		
4.28m x 2.73m	14' 0" x 8' 11"	
TOTAL INTERNAL AREA		
70.80m ²	762 ft ²	



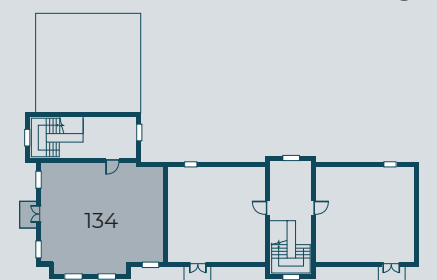
FIRST FLOOR

Type B2

SECOND FLOOR
2 bedroom apartment: Plot 134



KITCHEN/LIVING/DINING ROOM		
8.34m x 4.58m	27' 4" x 15' 0"	
BEDROOM 1		
4.58m x 2.55m	15' 0" x 8' 4"	
BEDROOM 2		
4.28m x 2.73m	14' 0" x 8' 11"	
TOTAL INTERNAL AREA		
70.80m ²	762 ft ²	



SECOND FLOOR

www.manningtreepark.co.uk



01206 598 305

manningtreepark@cityandcountry.co.uk

Computer generated images and photography are indicative only and of previous City & Country show homes. Accordingly, due to the City & Country policy of continual improvement, the finished product may vary from the information provided and City & Country reserves the right to amend the specification. All dimensions stated are approximate only with maximum dimensions and may alter through the construction phase and with interior finishes. You are therefore advised not to order any carpets, appliances or other goods which depend upon accurate dimensions before carrying out a check measure within your reserved property. Please be aware that the information contained in this document is indicative and intended to act as a guide only to the finished product and the properties available. The company reserves the right to alter these details at any time and without notice. The contents herein shall not form any part of any contract or be a representation including such contract. These properties are offered subject to availability. These particulars may not be relied upon as statements of fact or representation and buyers must satisfy themselves as to their correctness. Manningtree Park is a marketing name and may not necessarily form a part of the postal address. Produced September 2022. *Please ask sales executives for more details. **Changes need to be made early in the build process and within 4 weeks of reservation. There is a charge for this service. If you are interested, please discuss further with the Sales Team who can provide further information.

CITY & COUNTRY