



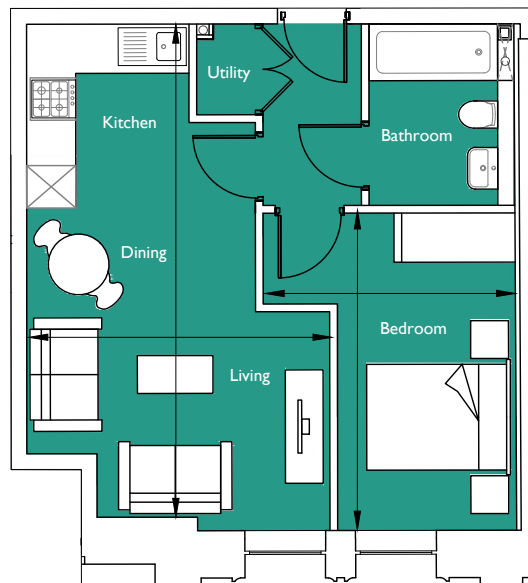
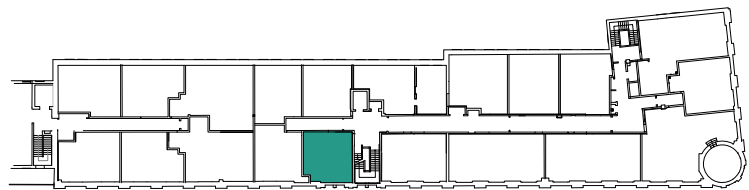
FACTORY N01  
BRISTOL

# Floorplan - Plot R316

I Bedroom Apartment  
Third Floor - Regent House  
Total area 452 sq ft (42.0 sq m)

Living/Dining/Kitchen	21' 5" x 13' 1"	(6.52m x 4.00m)
Bedroom	13' 9" x 10' 11"	(4.19m x 3.33m)

NOT TO SCALE



CITY & COUNTRY

01174 535 155 | [factorynumber1@cityandcountry.co.uk](mailto:factorynumber1@cityandcountry.co.uk) | [www.cityandcountry.co.uk](http://www.cityandcountry.co.uk)