



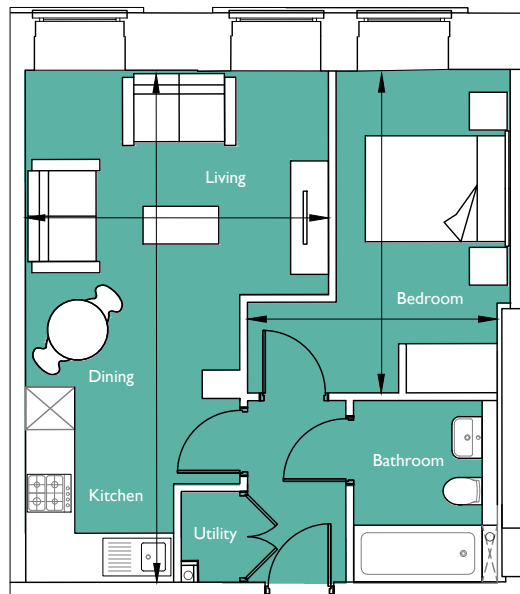
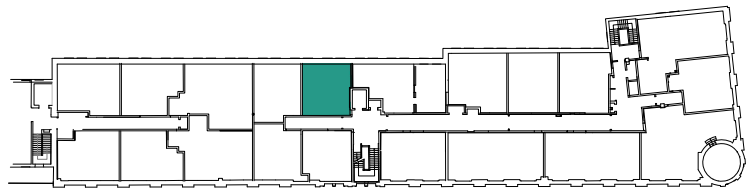
FACTORY N01  
BRISTOL

## Floorplan - Plot R305

I Bedroom Apartment  
Third Floor - Regent House  
Total area 457 sq ft (42.5 sq m)

Living/Kitchen/Dining	22' 3" x 13' 1"	(6.77m x 4.00m)
Bedroom	14' 0" x 7' 7"	(4.27m x 2.30m)

NOT TO SCALE



CITY & COUNTRY

01174 535 155 | [factorynumber1@cityandcountry.co.uk](mailto:factorynumber1@cityandcountry.co.uk) | [www.cityandcountry.co.uk](http://www.cityandcountry.co.uk)