

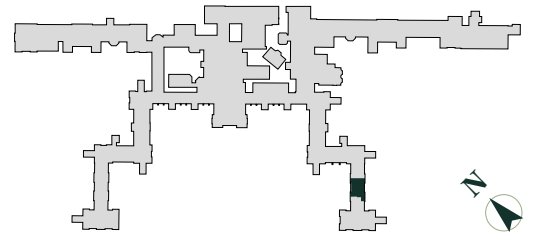
Floorplan – Plot JA12

2 Bedroom Apartment

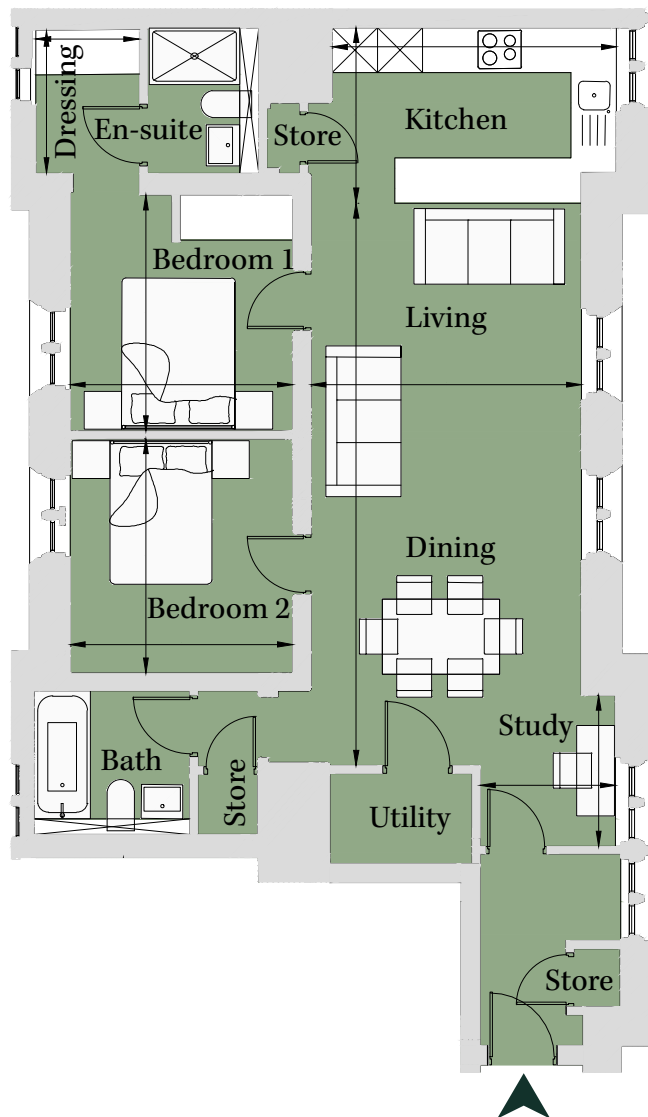
First Floor

Total area 880 sq ft (81.7 sq m)

Kitchen	12' 4" x 7' 8"	(3.77m x 2.33m)
Living/Dining	11' 9" x 24' 6"	(3.59m x 7.47m)
Study	5' 11" x 6' 7"	(1.80m x 2.00m)
Bedroom 1	10' 3" x 9' 8"	(3.13m x 2.95m)
Bedroom 2	10' 2" x 9' 8"	(3.10m x 2.95m)



Site Location Plan



020 3131 7006
e: the1840@cityandcountry.co.uk | w: www.cityandcountry.co.uk

CITY & COUNTRY