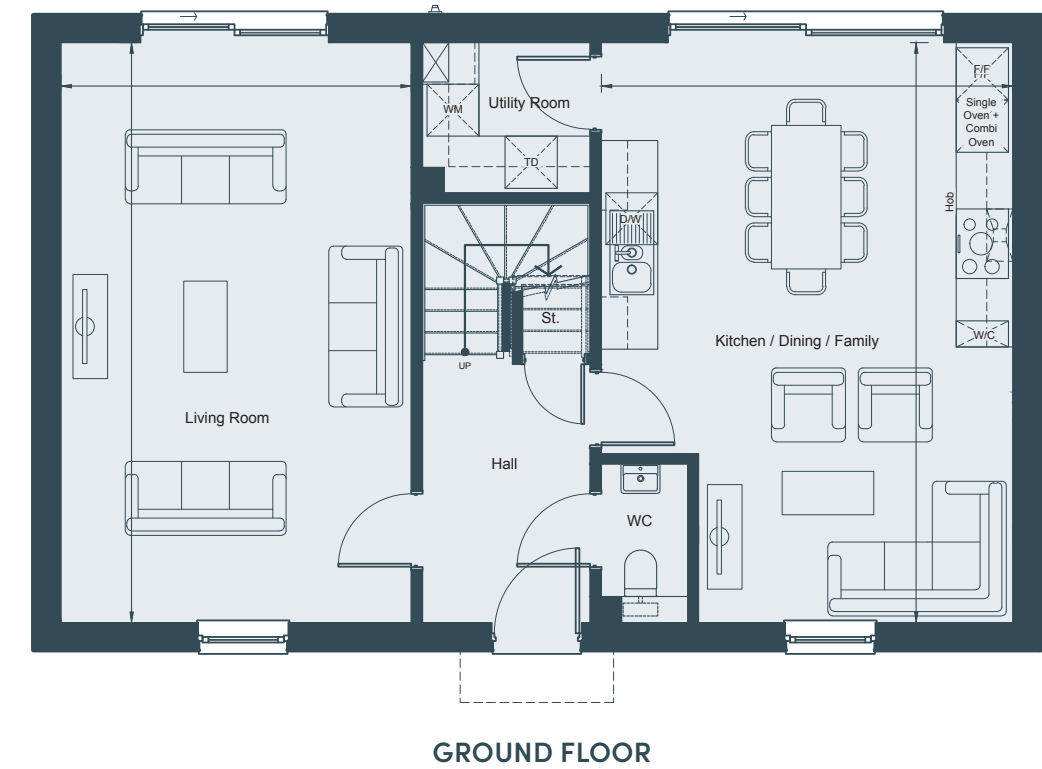
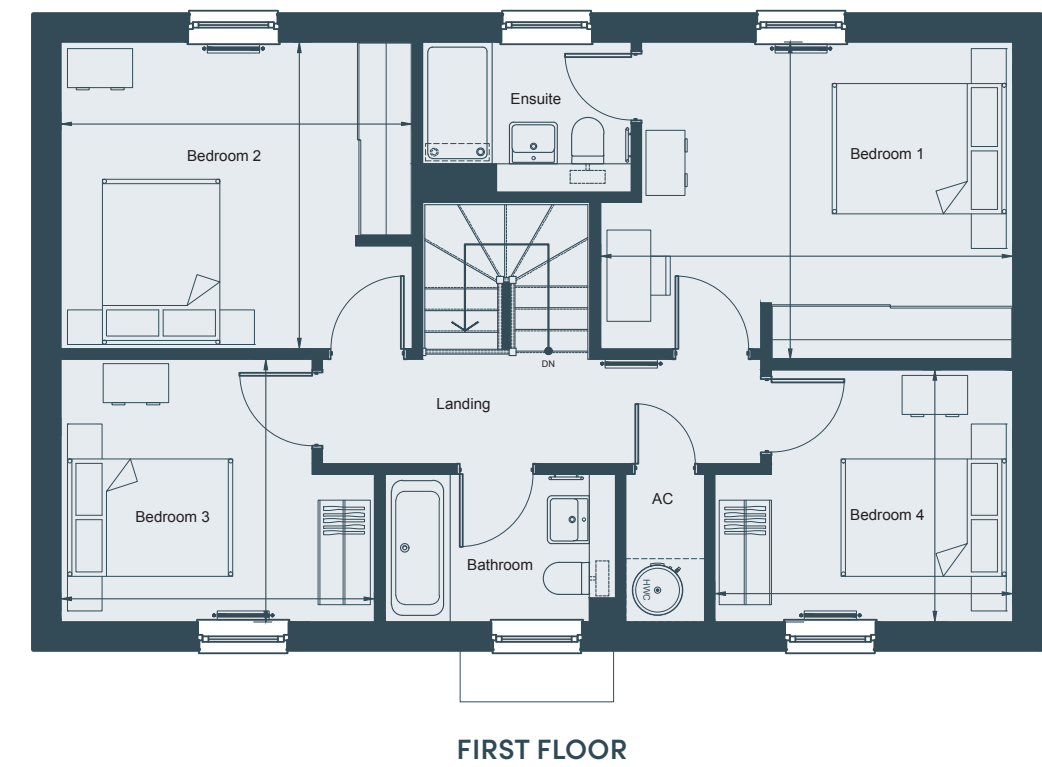


# THE RUSHLEY

145.96 sq m | 1,571.11 sq ft

4 BEDROOM DETACHED HOME  
PLOT 67



## GROUND FLOOR

Living Room	6.67m x 4.03m	21'11" x 13'3"
Kitchen/Dining/Family	6.67m x 4.73m	21'11" x 15'6"

## FIRST FLOOR

Bedroom 1	4.74m x 3.65m	15'7" x 12'0"
Bedroom 2	4.04m x 3.53m	13'3" x 11'7"
Bedroom 3	3.61m x 3.02m	11'10" x 9'11"
Bedroom 4	3.43m x 2.90m	11'3" x 9'6"



The information in this document is intended as a guide only and is subject to change without prior notice. Accordingly, due to the City & Country policy of continual improvement, the finished product may vary from the information provided and City & Country reserves the right to amend the specification. All dimensions stated are approximate only with maximum dimensions and may alter through the construction phase with interior finishes. You are therefore advised not to order any carpets, appliances or other goods which depend upon accurate dimensions before carrying out a check measure within your reserved property. Floorplans not to scale. July 2022.