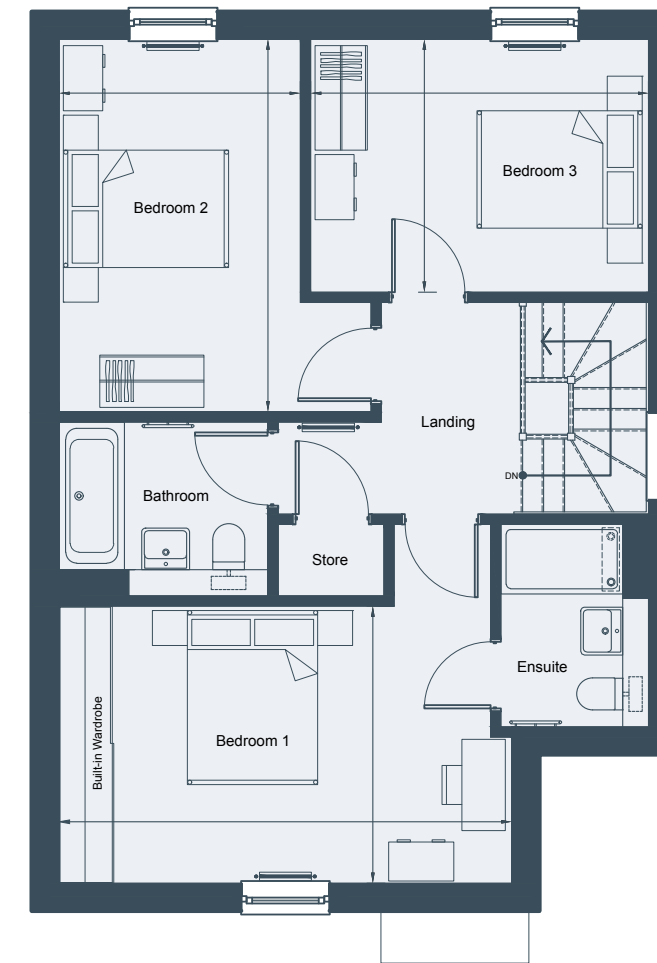


THE PLUMTREE

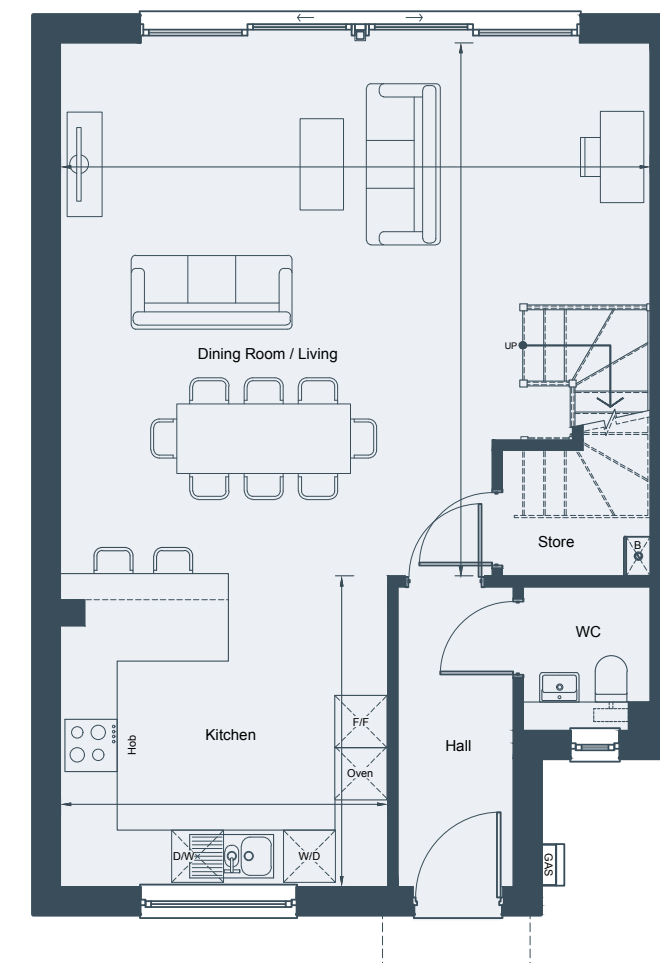
Gross Internal Area 126 sq m | 1,356 sq ft

3 BEDROOM DETACHED HOME

PLOTS 68, 69, 82, 83 & 85*



FIRST FLOOR



GROUND FLOOR

GROUND FLOOR

Dining Room/Living	6.78m x 6.13m	22'3" x 20'1"
Kitchen	3.76m x 3.57m	12'4" x 11'9"

FIRST FLOOR

Bedroom 1	5.21m x 3.19m	17'1" x 10'5"
Bedroom 2	4.28m x 2.78m	14'1" x 9'1"
Bedroom 3	3.89m x 2.91m	12'9" x 9'7"

*Plot handed to floorplan shown



The information in this document is intended as a guide only and is subject to change without prior notice. Accordingly, due to the City & Country policy of continual improvement, the finished product may vary from the information provided and City & Country reserves the right to amend the specification. All dimensions stated are approximate only with maximum dimensions and may alter through the construction phase with interior finishes. You are therefore advised not to order any carpets, appliances or other goods which depend upon accurate dimensions before carrying out a check measure within your reserved property. Floorplans not to scale. March 2023.