

# THE CHRISHALL

102 sq m | 1,097 sq ft

## 3 BEDROOM DETACHED HOME

PLOTS 7 & 54

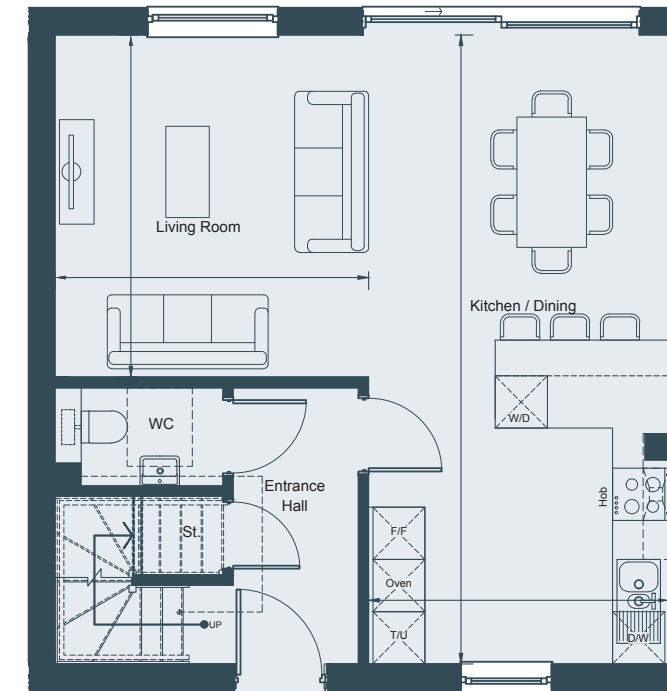


## 3 BEDROOM SEMI-DETACHED HOME

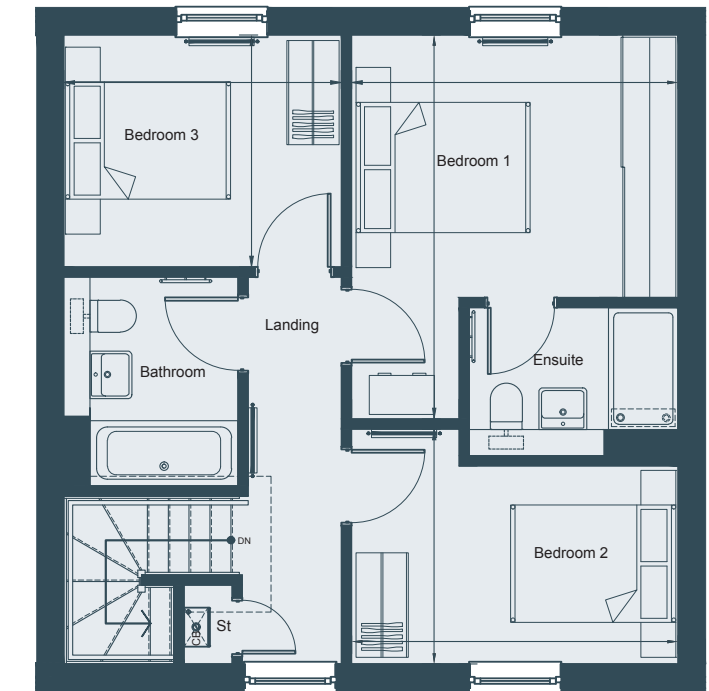
PLOTS 80\* & 81



## DETACHED PLOTS 7 & 54

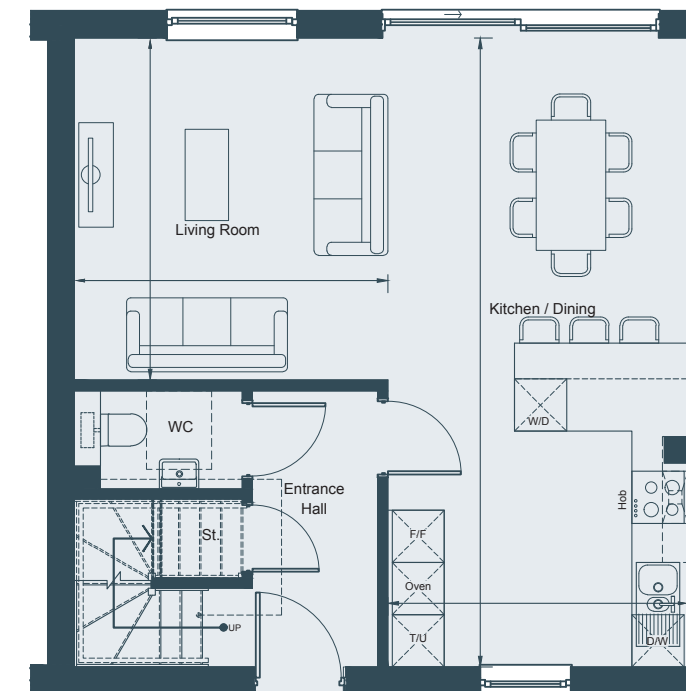


GROUND FLOOR

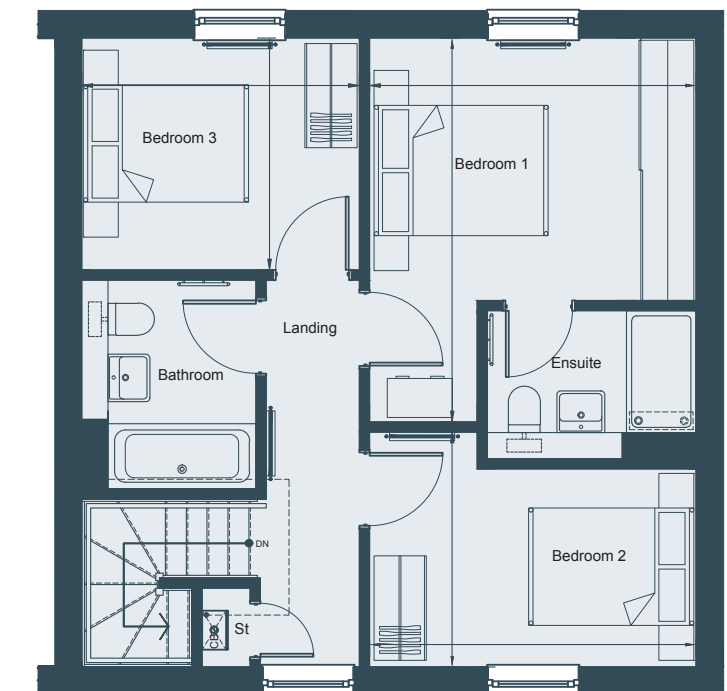


FIRST FLOOR

## SEMI-DETACHED PLOTS 80 & 81



GROUND FLOOR



FIRST FLOOR

### GROUND FLOOR

Living Room	3.61m x 3.93m	11'10" x 12'11"
Kitchen/Dining	3.46m x 7.23m	11'4" x 23'9"

### FIRST FLOOR

Bedroom 1	3.75m x 4.41m	12'4" x 14'6"
Bedroom 2	3.75m x 2.70m	12'4" x 8'10"
Bedroom 3	3.19m x 2.66m	10'6" x 8'9"

\*Plot handed to floorplan shown



The information in this document is intended as a guide only and is subject to change without prior notice. Accordingly, due to the City & Country policy of continual improvement, the finished product may vary from the information provided and City & Country reserves the right to amend the specification. All dimensions stated are approximate only with maximum dimensions and may alter through the construction phase with interior finishes. You are therefore advised not to order any carpets, appliances or other goods which depend upon accurate dimensions before carrying out a check measure within your reserved property. Floorplans not to scale. July 2022.