

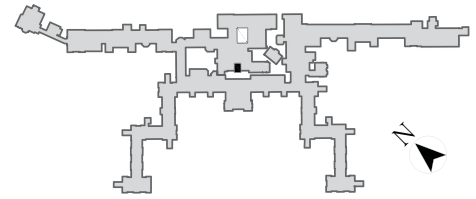
PLOT KB04

1 Bedroom Apartment

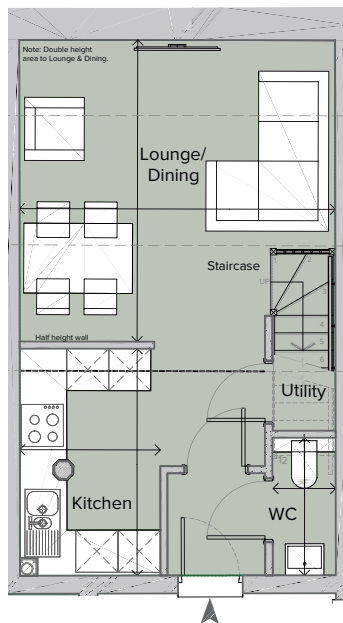
Ground/First Floor

Total area 573.40 sq ft (53.27 sq m)

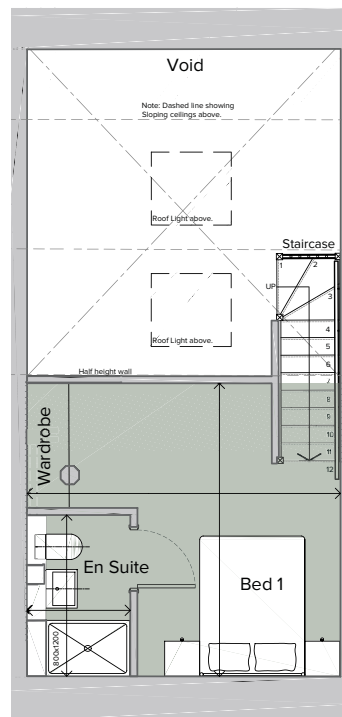
Kitchen	6' 7" x 10' 8"	(2.00m x 3.24m)
Lounge/Dining	14' 11" x 14' 9"	(4.30m x 4.51m)
WC	2' 11" x 6' 5"	(0.90m x 1.96m)
Bedroom 1	14' 8" x 13' 9"	(4.47m x 4.18m)
Ensuite	4' 10" x 7' 6"	(1.48m x 2.30m)



Plot Locator Plan



Ground Floor Plan



First Floor Mezzanine Plan