

PLOT KB18

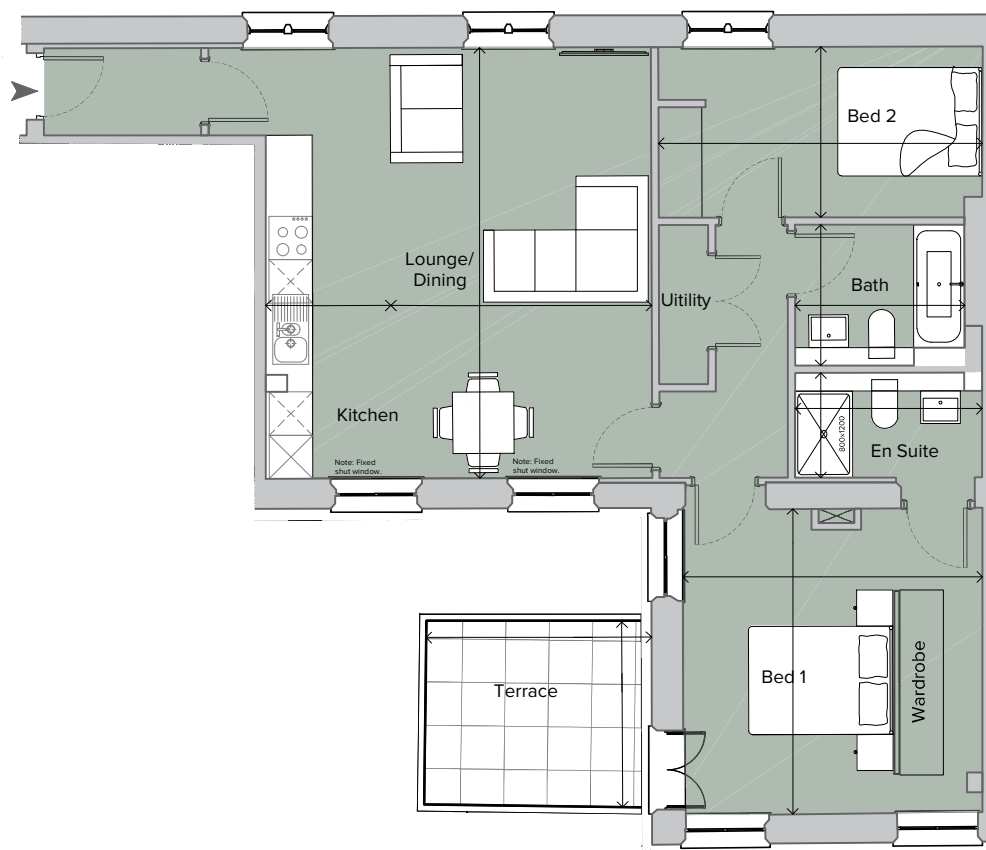
2 Bedroom Apartment

Terrace	10' 3" x 8' 6"	(3.12m x 2.58m)
Ensuite	4' 9" x 8' 6"	(1.45m x 2.59m)
Bedroom 2	14' 9" x 7' 9"	(4.48m x 2.36m)

First Floor		
Total area 879.42 sq ft (81.70 sq m)		
Kitchen	5' 8" x 19' 7"	(1.73m x 5.96m)
Lounge/Dining	11' 10" x 19' 7"	(3.61m x 5.96m)
Bath	7' 8" x 6' 5"	(2.34m x 1.95m)
Bedroom 1	13' 10" x 13' 7"	(4.22m x 4.15m)



Plot Locator Plan



First Floor Plan