

THE
PLAYFAIR

AT DONALDSON'S



SIGNATURE
COLLECTION

Apartment S07 & S08

Two bedroom penthouse apartment

SIGNATURE
COLLECTION

THE
PLAYFAIR
AT DONALDSON'S

Apartment S07 & S08

A fabulous two bedroom roof top apartment with a spacious private terrace

The long hallway, leading into a beautifully light and open-plan living space, sets the scene within this rooftop apartment. With original beams in the master bedroom, a quirky tower room and storage cupboards tucked into the eaves, this is an apartment with a wonderful sense of character.

The contemporary linear kitchen from Ballerina, which includes integrated Siemens appliances and Corian worktops, flows seamlessly into the light-filled living area. An expanse of glazing blurs the boundary between inside and outside space and ensures that the private terrace becomes an extension of the living and entertaining space.

The terrace, bounded by hedging and providing views of Donaldson's fairytale towers and turrets, has a short flight of steps leading to a quirky tower room ideal for storing garden furniture or sporting equipment.

The master bedroom features an en-suite with shower, and the guest bedroom is adjacent to a separate bathroom with bath. The bathrooms are exceptionally finished with contemporary porcelain tiles, sanitaryware from Villeroy and Boch, and Brassware from Hansgrohe and Crosswater.

Dimensions

Total NSA 1,371 sq ft (127.4 sq m)

Living	22' 5" x 13' 10"	(6.84m x 4.22m)
Kitchen / Dining	17' 4" x 12' 3"	(5.28m x 3.74m)
Bedroom 1	15' 1" x 13' 5"	(4.60m x 4.09m)
Bedroom 2	13' 5" x 9' 8"	(4.09m x 2.94m)

An abundance of storage space including eaves storage lining the hallway

Spacious master bedroom with en suite shower room, large fitted wardrobe and original feature beams

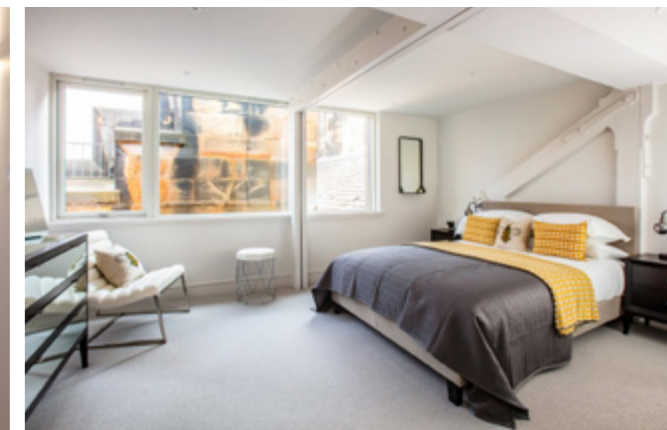
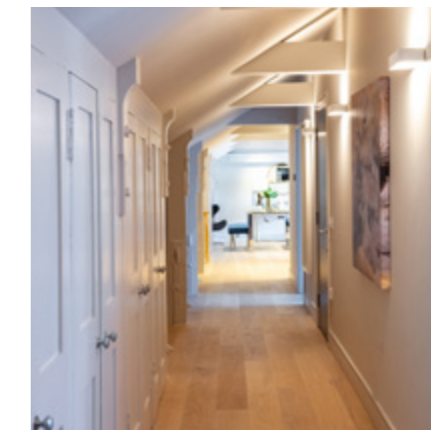
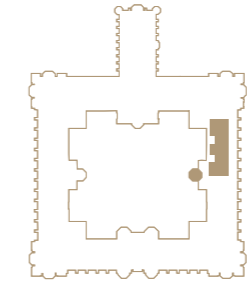
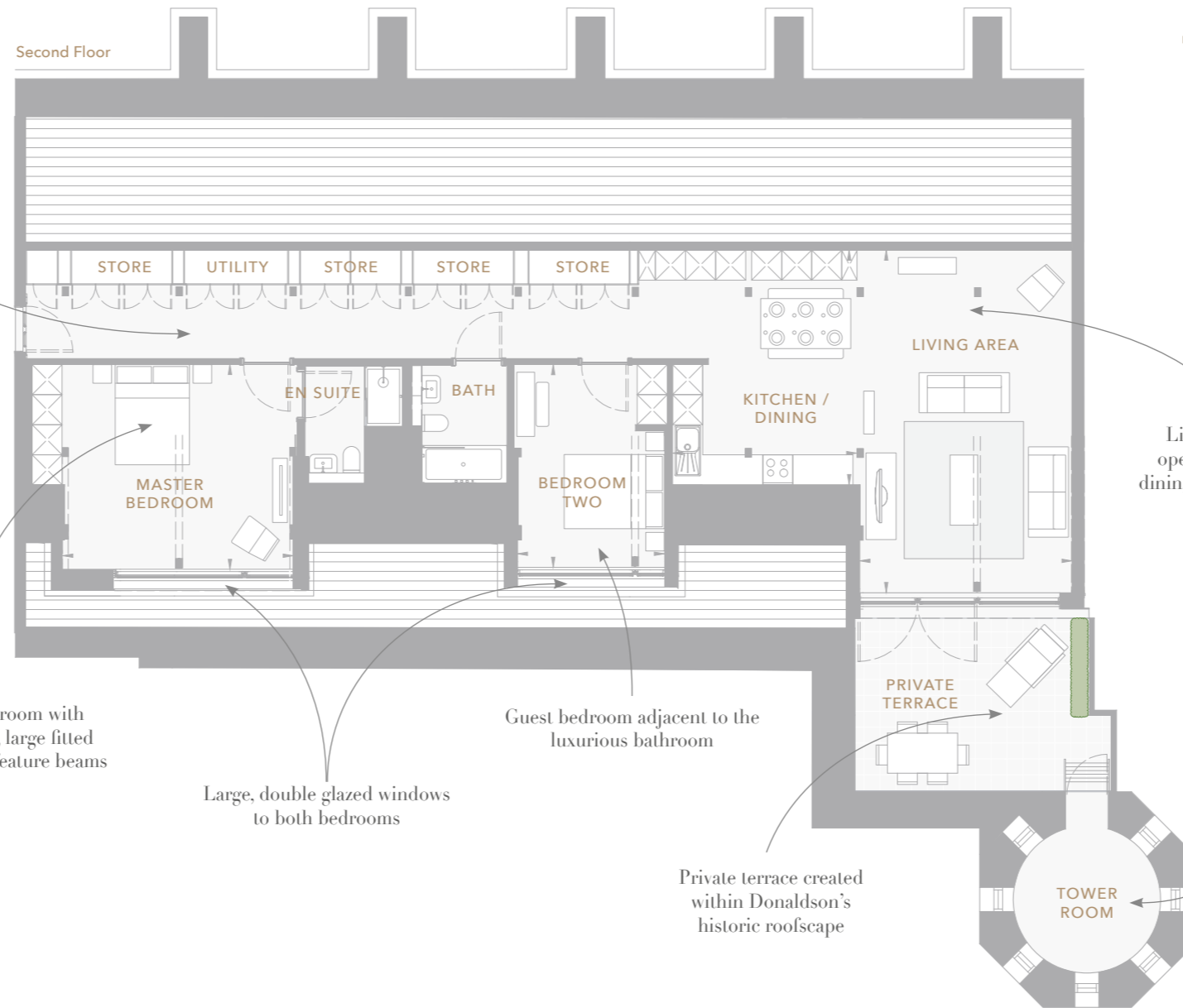
Large, double glazed windows to both bedrooms

Guest bedroom adjacent to the luxurious bathroom

Private terrace created within Donaldson's historic roofscape

Light and bright open plan kitchen, dining and living space

Quirky private tower room creating additional storage space



Floor plan shown is Apartment S07. Apartment S08 is handed and therefore room sizes, layout, furnishing/fittings and views may vary.

Photography shown may be of similar apartments at Donaldson's and is indicative only



The information in this document is intended as a guide only and is subject to change without prior notice. Accordingly, due to the City & Country policy of continual improvement, the finished product may vary from the information provided and City & Country reserves the right to amend the specification. Photography shown may be of similar apartments at Donaldson's and is indicative only. All dimensions stated are approximate only with maximum dimensions and may alter through the construction phase and with interior finishes. You are therefore advised not to order any carpets, appliances or other goods which depend upon accurate dimensions before carrying out a check measure within your reserved property.