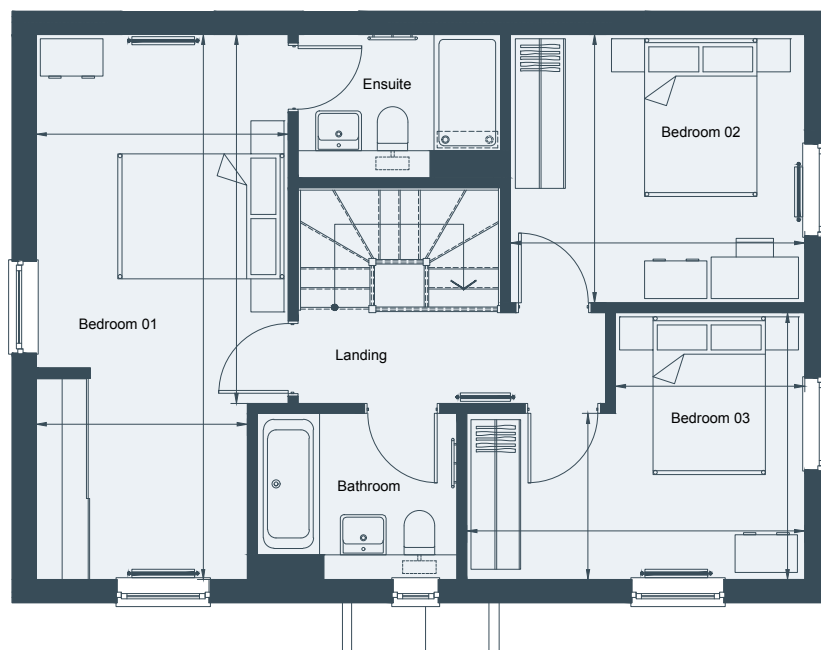


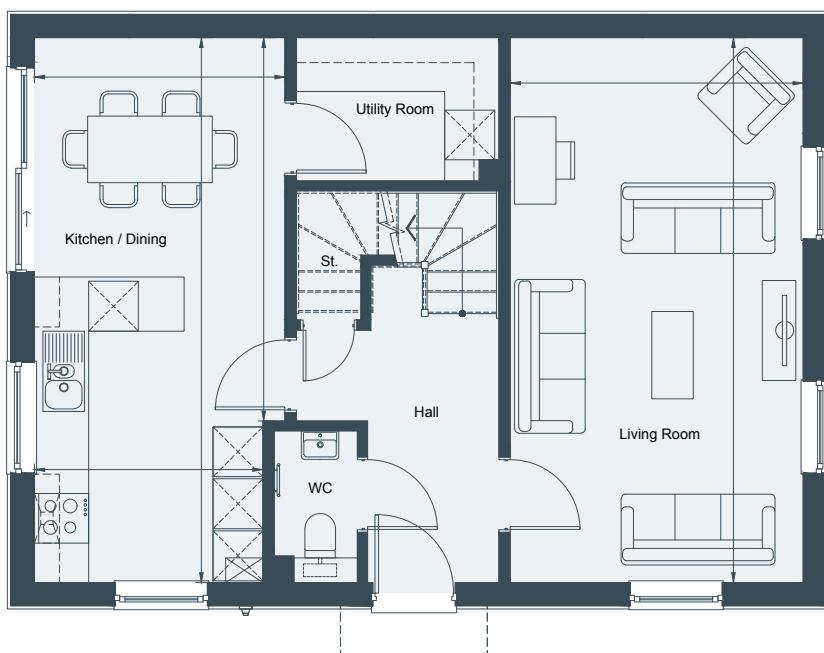
THE NORTHEY

3 BEDROOM SEMI-DETACHED HOME PLOT 55

| | | |
|---------------------|---------------|---------------|
| Living | 3.54m x 6.56m | 11'7" x 21'6" |
| Kitchen/Dining | 3.03m x 6.56m | 9'11" x 21'6" |
| Bedroom 1 | 3.03m x 6.56m | 9'11" x 21'6" |
| Bedroom 2 | 3.55m x 3.23m | 11'7" x 10'7" |
| Bedroom 3 | 4.07m x 3.21m | 13'4" x 10'6" |
| Total Internal Area | 121.12 sq m | 1303 sq ft |



FIRST FLOOR



GROUND FLOOR