



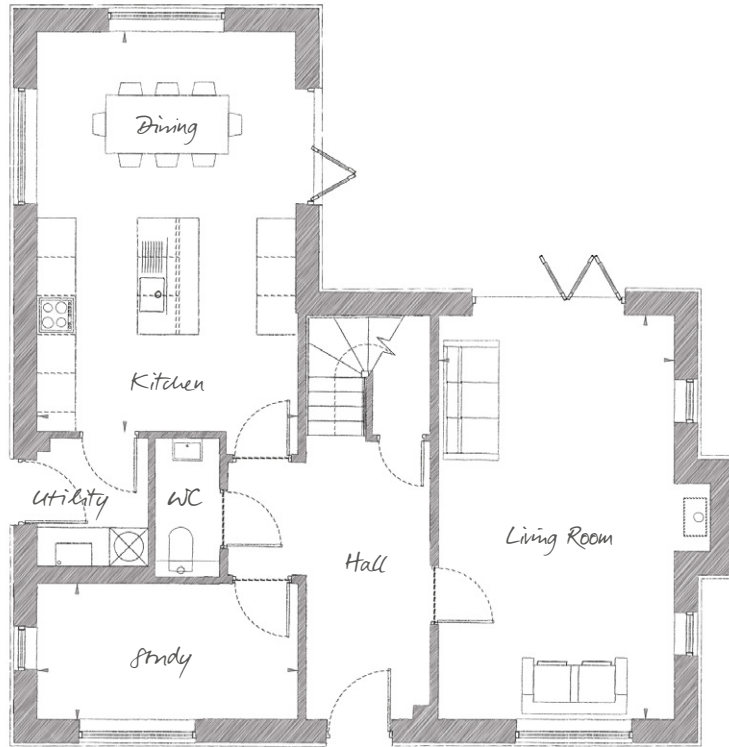
## THE ROCHFORD

FOUR BEDROOM, DETACHED HOME  
WITHIN THE ST OSYTH PRIORY ESTATE

# THE ROCHFORD

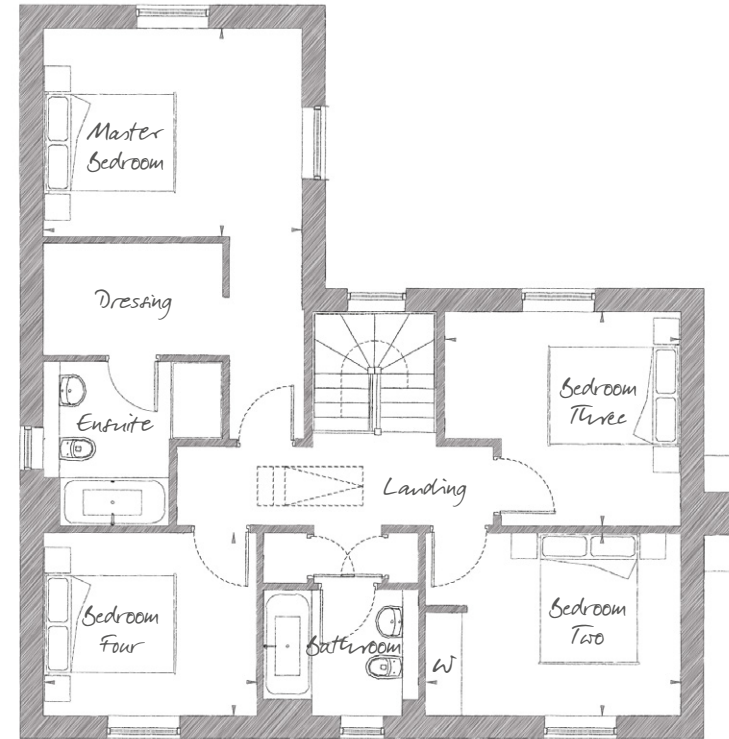
FOUR BEDROOM, DETACHED HOUSE | 1,733 SQ FT (161 SQ M)

PLOTS 8, 10



**GROUND FLOOR**

Living Room	20'5" x 11'9"	(6.25m x 3.64m)
Kitchen / Dining	20'2" x 13'2"	(6.18m x 4.03m)
Study	13'2" x 6'11"	(4.03m x 2.13m)



**FIRST FLOOR**

Master Bedroom	13'09" x 10'5"	(3.99m x 3.22m)
Bedroom Two	12'9" x 9'3"	(3.94m x 2.84m)
Bedroom Three	11'9" x 10'8"	(3.64m x 3.32m)
Bedroom Four	10'8" x 9'2"	(3.30m x 2.82m)



01255 388612

stosythpriority@cityandcountry.co.uk | cityandcountry.co.uk

