



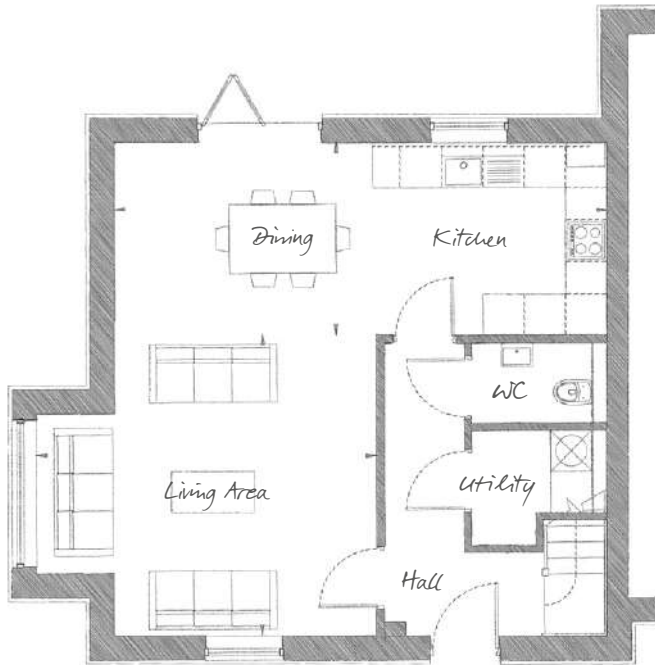
## THE NASSAU

THREE BEDROOM, SEMI/DETACHED HOME  
WITHIN THE ST OSYTH PRIORY ESTATE

# THE NASSAU

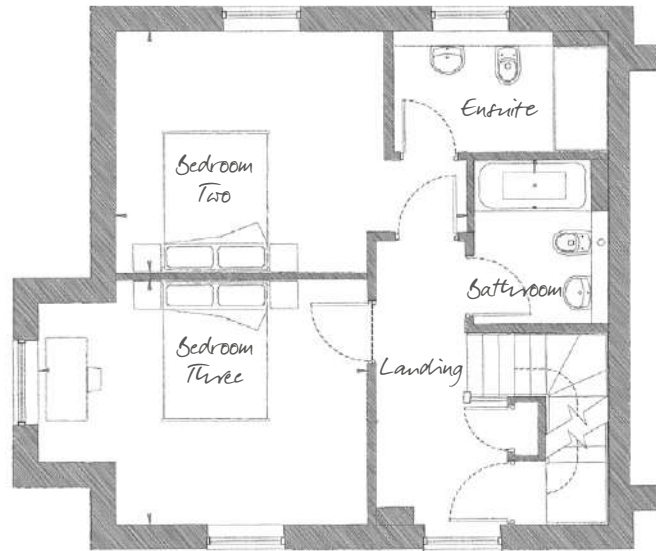
THREE BEDROOM, SEMI/DETACHED HOUSE | 1,513 SQ FT (140.5 SQ M)

PLOTS 2, 5, 25



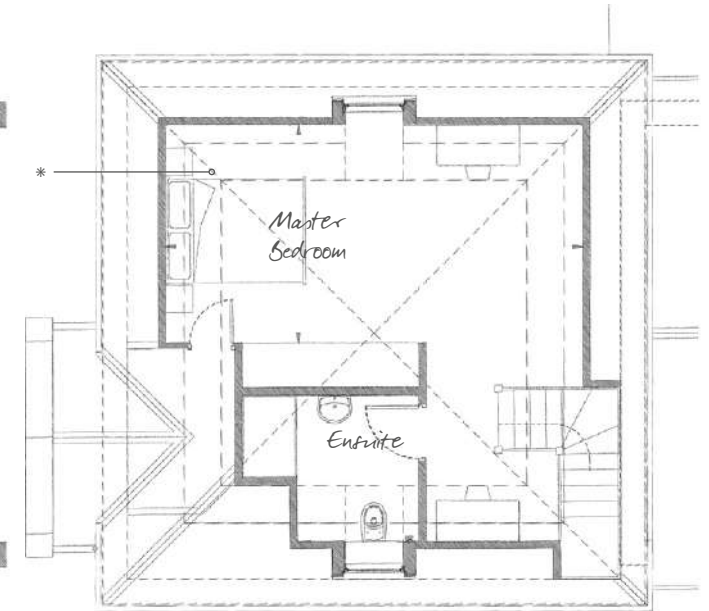
**GROUND FLOOR**

Living 16'3" x 14'5" (4.96m x 4.40m)  
 Kitchen / Dining 23'7" x 9'2" (7.20m x 2.80m)



**FIRST FLOOR**

Bedroom Two 11'5" x 16'8" (5.10m x 3.50m)  
 Bedroom Three 15'9" x 11'8" (4.80m x 3.57m)



**SECOND FLOOR**

Master Bedroom 19'8" x 10'4" (6.05m x 3.17m)

Second floor to plot 2 only. Ask our Sales Executives for further information.



01255 388612  
 stosythpriority@cityandcountry.co.uk | cityandcountry.co.uk

