

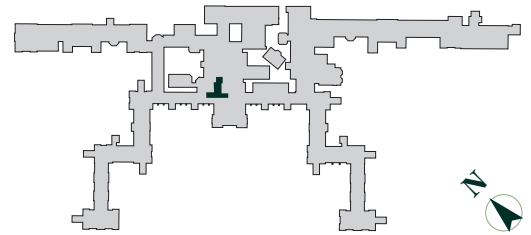
Floorplan – Plot CC15

2 Bedroom Apartment

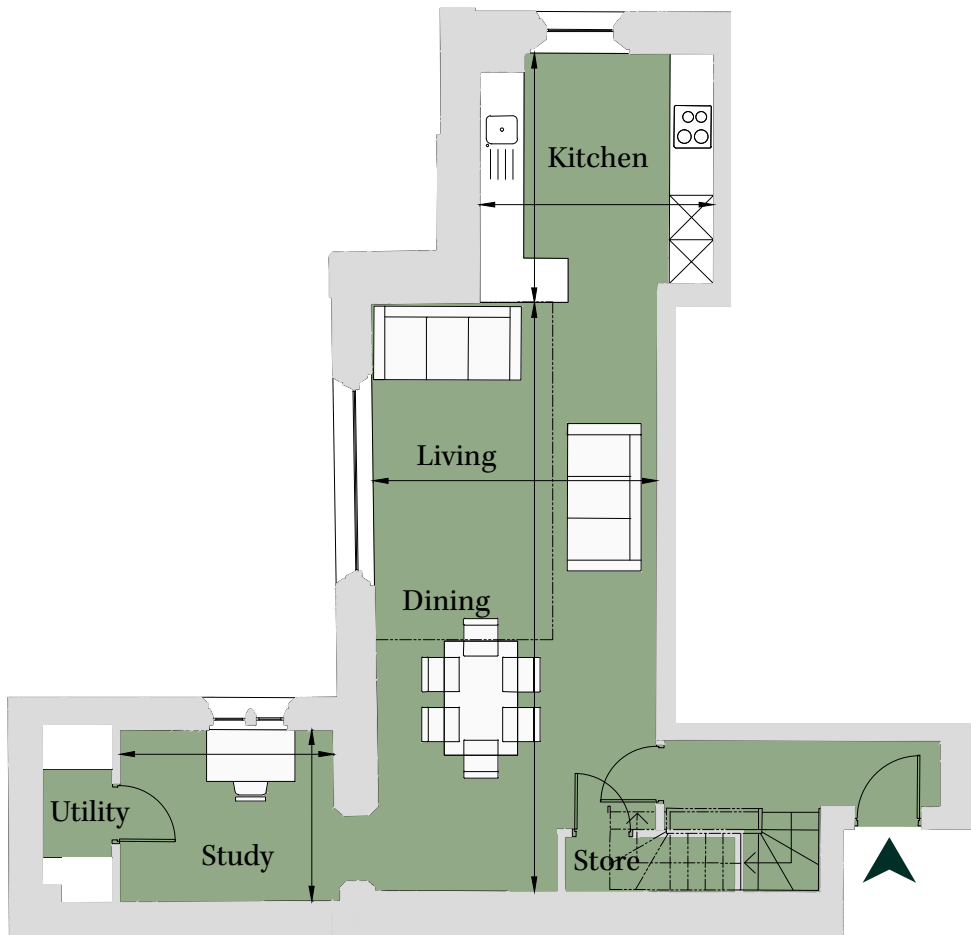
Second/Third Floor

Total area 1,143 sq ft (106.2 sq m)

Living/Dining	26' 3" x 12' 8"	(7.99m x 3.85m)
Kitchen	11' 1" x 10' 5"	(3.38m x 3.17m)
Bedroom 1	10' 8" x 10' 1"	(3.24m x 3.06m)
Bedroom 2	10' 9" x 10' 5"	(3.27m x 3.17m)
Study	9' 6" x 7' 7"	(2.90m x 2.32m)
Dressing	6' 4" x 7' 5"	(1.94m x 2.27m)



Site Location Plan



Second Floor

020 3131 7006
e: the1840@cityandcountry.co.uk | w: www.cityandcountry.co.uk

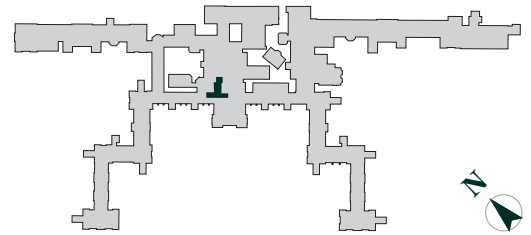
Floorplan – Plot CC15

2 Bedroom Apartment

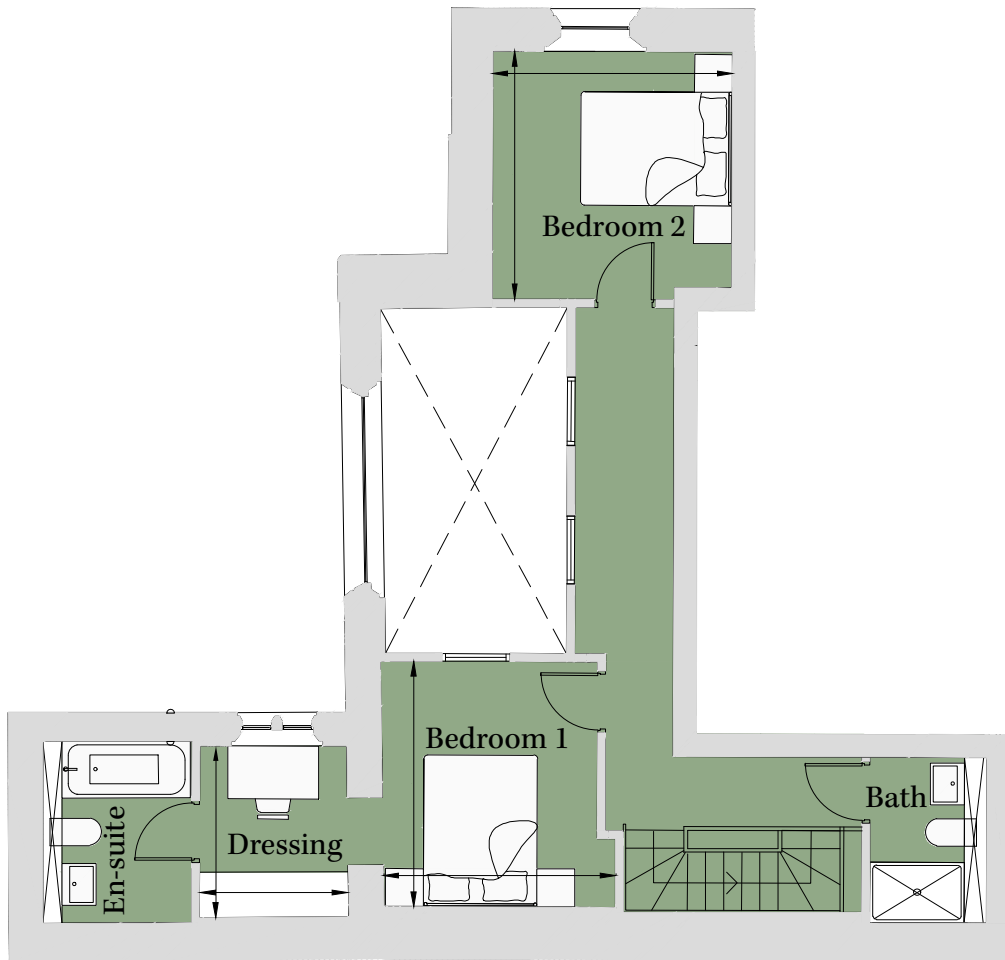
Second/Third Floor

Total area 1,143 sq ft (106.2 sq m)

Living/Dining	26' 3" x 12' 8"	(7.99m x 3.85m)
Kitchen	11' 1" x 10' 5"	(3.38m x 3.17m)
Bedroom 1	10' 8" x 10' 1"	(3.24m x 3.06m)
Bedroom 2	10' 9" x 10' 5"	(3.27m x 3.17m)
Study	9' 6" x 7' 7"	(2.90m x 2.32m)
Dressing	6' 4" x 7' 5"	(1.94m x 2.27m)



Site Location Plan



Third Floor

020 3131 7006
e: the1840@cityandcountry.co.uk | w: www.cityandcountry.co.uk



The information in this document is intended as a guide only and is subject to change without prior notice. Accordingly, due to the City & Country policy of continual improvement, the finished product may vary from the information provided and City & Country reserves the right to amend the specification. All dimensions stated are approximate only with maximum dimensions and may alter through the construction phase and with interior finishes. You are therefore advised not to order any carpets, appliances or other goods which depend upon accurate dimensions before carrying out a check measure within your reserved property. May 2021.