

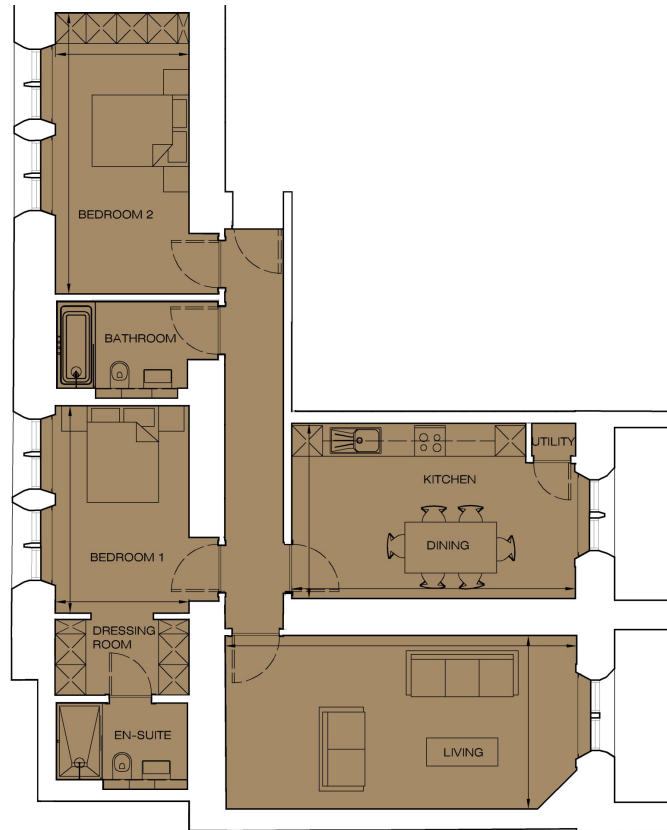
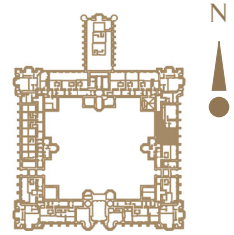
# THE PLAYFAIR

AT DONALDSON'S

## Floorplan - Plot GM02 NOT TO SCALE

2 Bedroom Apartment | Ground floor | Total area 1041 sq ft (96.7 sq m)

Living	22' 8" x 11' 2"	(6.90m x 3.40m)	Bedroom 1	13' 4" x 8' 7"	(4.07m x 2.62m)
Kitchen / Dining	18' 3" x 11' 3"	(5.56m x 3.44m)	Bedroom 2	18' 0" x 8' 7"	(5.50m x 2.62m)



FLAT GM02 - MEZZANINE FLOOR PLAN

0131 610 6000

e: [sales@cityandcountry.co.uk](mailto:sales@cityandcountry.co.uk) | w: [www.cityandcountry.co.uk](http://www.cityandcountry.co.uk)

CITY & COUNTRY

The information in this document is intended as a guide only and is subject to change without prior notice. Accordingly, due to the City & Country policy of continual improvement, the finished product may vary from the information provided and City & Country reserves the right to amend the specification. All dimensions stated are approximate only with maximum dimensions and may alter through the construction phase and with interior finishes. You are therefore advised not to order any carpets, appliances or other goods which depend upon accurate dimensions before carrying out a check measure within your reserved property. December 2017.