

PHASE 1
FLOORPLANS
ONE BEDROOM APARTMENTS

THE 1840
ST GEORGE'S GARDENS

CITY & COUNTRY

THE 1840, ST GEORGE'S GARDENS

*Luxurious 1, 2 and 3 bedroom
conversion apartments in the
heart of South West London*



CGI is indicative only

EXPLORING THE 1840



HOMES OF DISTINCTION

A superior specification

Discover the superbly appointed and excellently crafted Grade II listed conversion apartments in the heart of South West London.

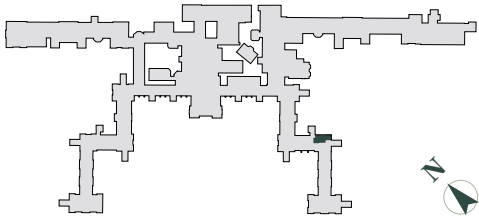
Materials and colours seamlessly combine modern city living with period grandeur. A sense of natural simplicity and informal luxury will be created throughout each apartment.

Walk into The 1840 and you will see that careful thought, together with superior build quality and finishes, create living spaces that not only function perfectly but look and feel spectacular.

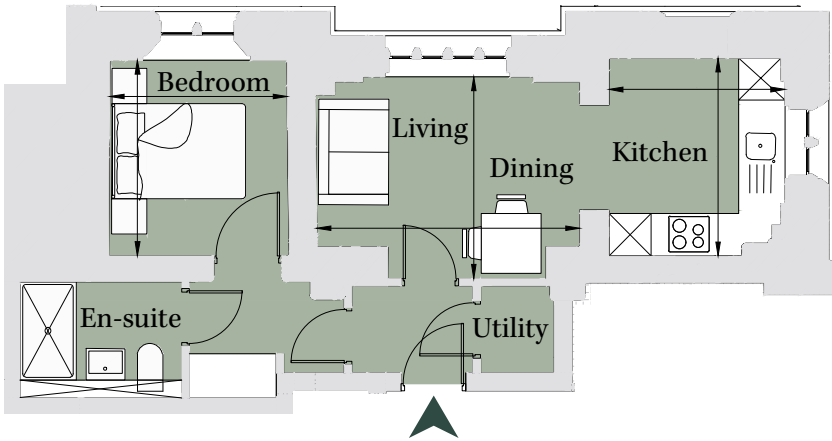


PLOT LU06
1 Bedroom Apartment

Ground Floor		
Total area 416 sq ft (38.6 sq m)		
Kitchen	9' 3" x 8' 2"	(2.81m x 2.49m)
Living/Dining	9' 5" x 12' 3"	(2.86m x 3.73m)
Bedroom	9' 1" x 8' 3"	(2.77m x 2.52m)

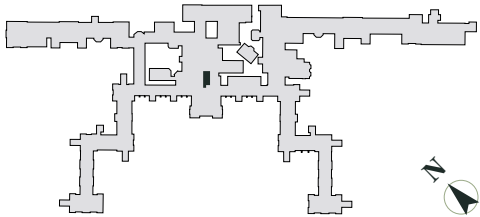


Site Location Plan

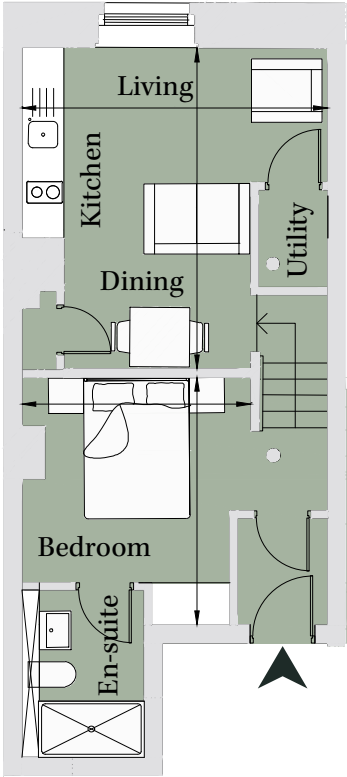


PLOT CC10
1 Bedroom Apartment

First Floor		
Total area 419 sq ft (38.9 sq m)		
Kitchen/Living /Dining	15' x 14' 3"	(4.56m x 4.34m)
Bedroom	11' 7" x 10' 8"	(3.52m x 3.25m)

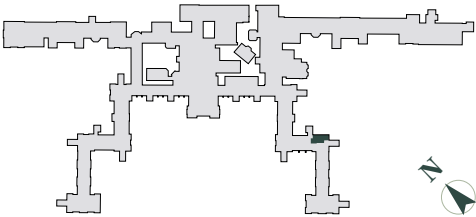


Site Location Plan

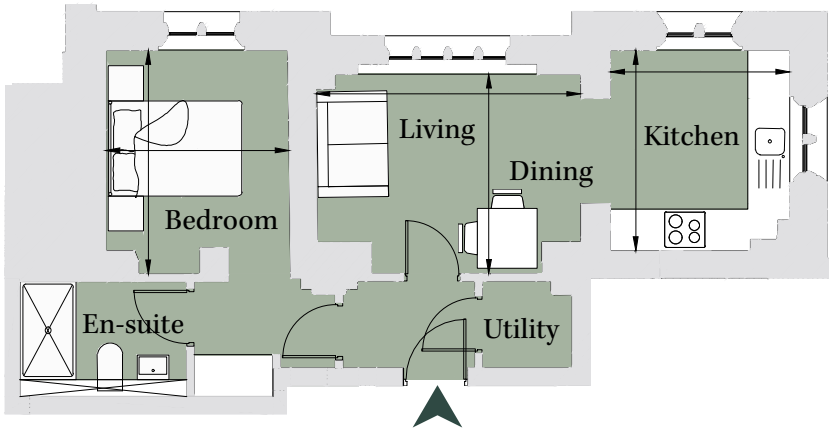


PLOT LU09
1 Bedroom Apartment

First Floor		
Total area 431 sq ft (40.1 sq m)		
Kitchen	9' 4" x 8' 5"	(2.85m x 2.55m)
Living/Dining	9' 4" x 12' 5"	(2.83m x 3.76m)
Bedroom	10' 5" x 8' 7"	(3.18m x 2.60m)

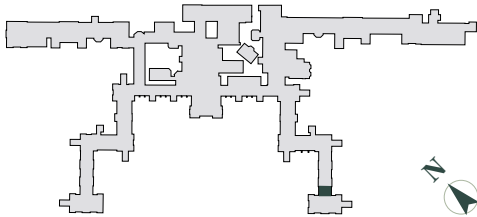


Site Location Plan

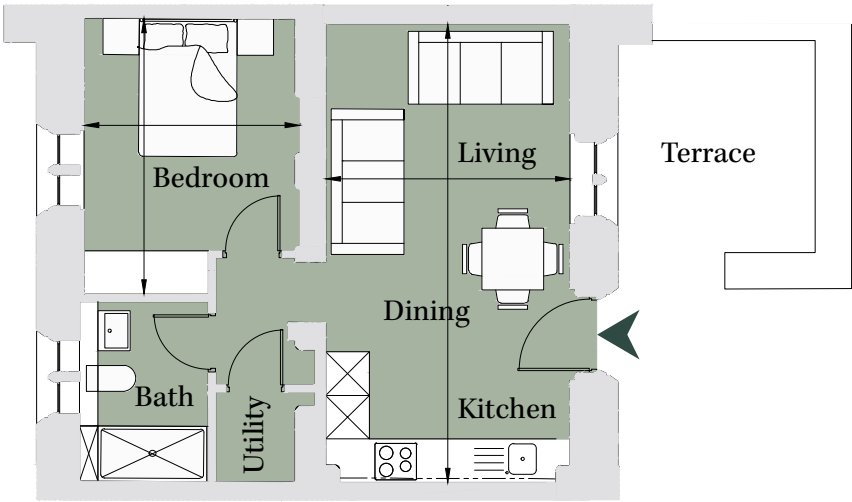


PLOT JA04
1 Bedroom Apartment

Lower Ground		
Total area 458 sq ft (24.5 sq m)		
Living/Dining /Kitchen	20' 9" x 11' 1"	(6.31m x 3.36m)
Bedroom	12' 6" x 9' 9"	(3.79m x 2.96m)

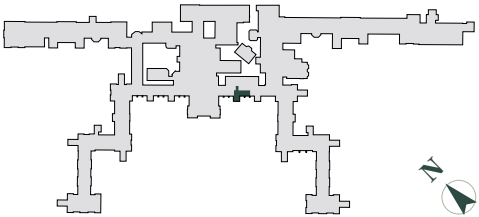


Site Location Plan

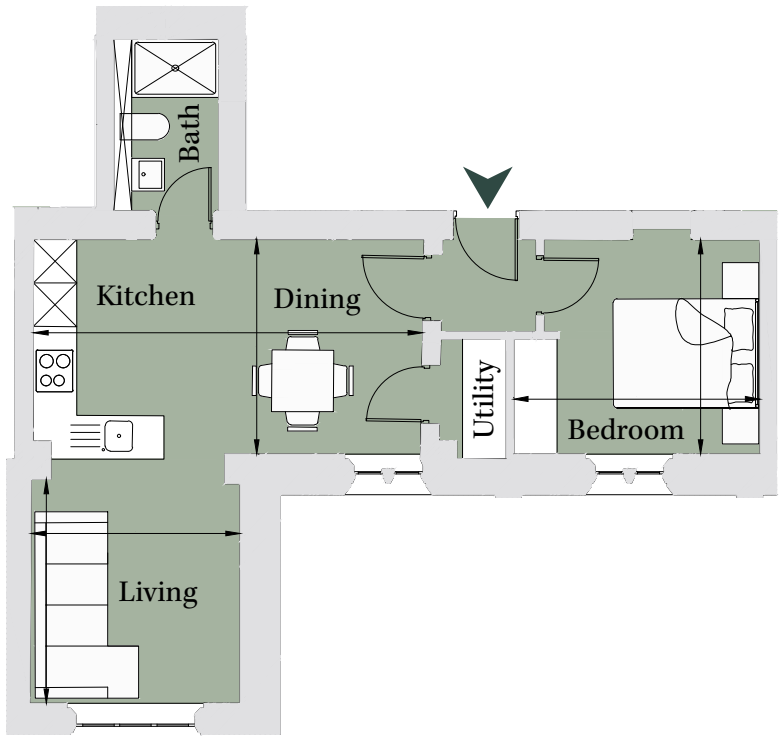


PLOT CE05
1 Bedroom Apartment

Ground Floor		
Total area 467 sq ft (43.4 sq m)		
Kitchen/Dining	9' 9" x 17' 7"	(2.96m x 5.35m)
Living	10' 2" x 9' 5"	(3.08m x 2.87m)
Bedroom	9' 9" x 11' 2"	(2.95m x 3.39m)

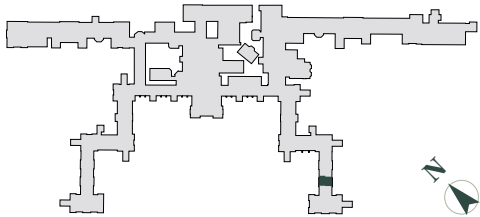


Site Location Plan

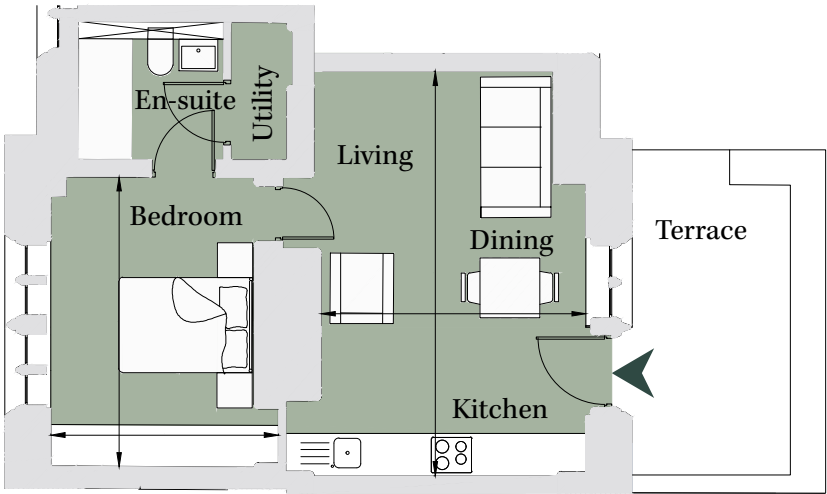


PLOT JA01
1 Bedroom Apartment

Lower Ground		
Total area 474 sq ft (44.1 sq m)		
Living/Dining /Kitchen	18' 11" x 12' 4"	(5.75m x 3.76m)
Bedroom	13' 6" x 10' 7"	(4.11m x 3.23m)

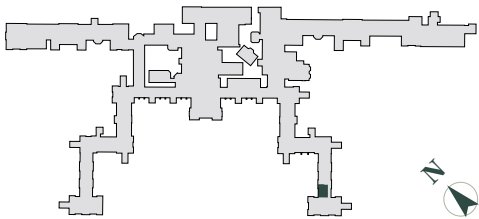


Site Location Plan

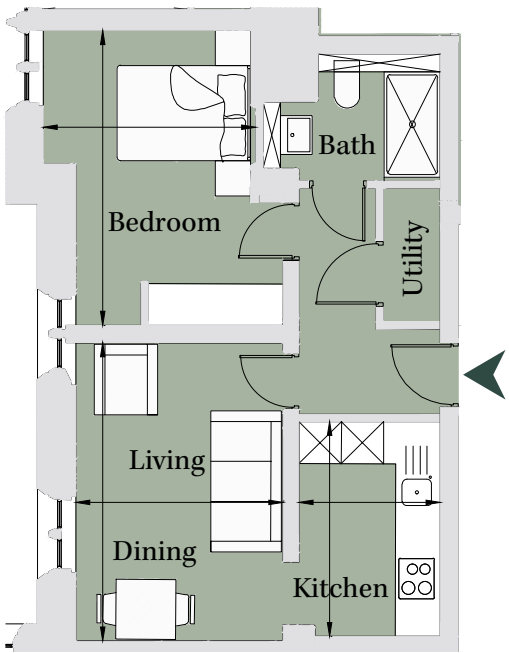


PLOT JA11
1 Bedroom Apartment

	First Floor	
	Total area 481 sq ft (44.7 sq m)	
Living/Dining	13' 11" x 9' 8"	(4.23m x 2.94m)
Kitchen	10' x 6' 7"	(3.05m x 2.00m)
Bedroom	13' 9" x 9' 11"	(4.18m x 3.01m)

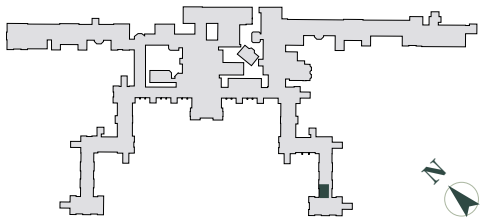


Site Location Plan

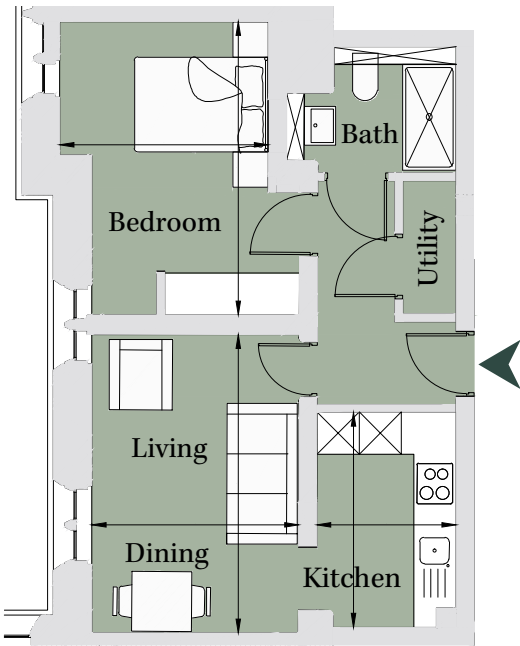


PLOT JA07
1 Bedroom Apartment

	Ground Floor	
	Total area 481 sq ft (44.7 sq m)	
Living/Dining	13' 11" x 9' 8"	(4.24m x 2.93m)
Kitchen	10' 1" x 6' 6"	(3.06m x 1.98m)
Bedroom	13' 8" x 9' 9"	(4.17m x 2.96m)

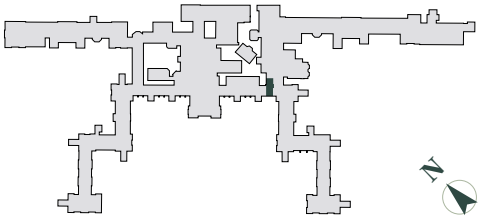


Site Location Plan

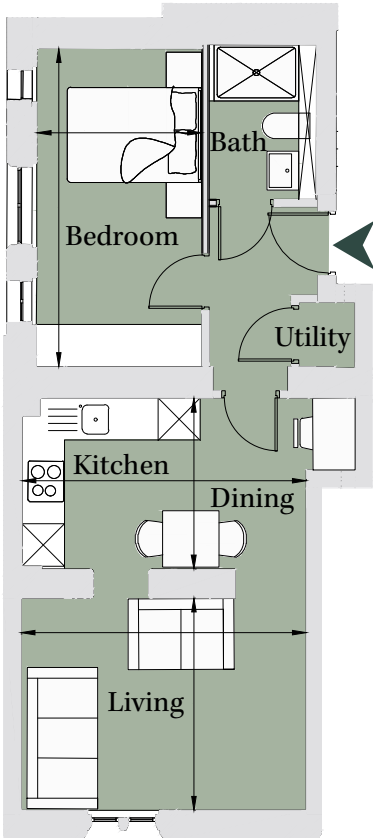


PLOT PR04
1 Bedroom Apartment

First Floor		
Total area 482 sq ft (44.8 sq m)		
Living	9' 11" x 13' 3"	(3.00m x 4.04m)
Dining/Kitchen	7' 11" x 13' 3"	(2.42m x 4.03m)
Bedroom	14' 10" x 7' 8"	(4.51m x 2.34m)

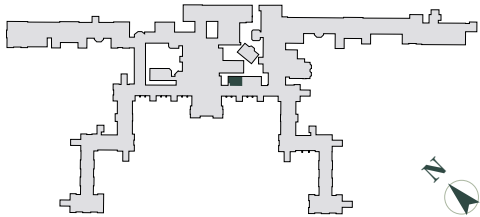


Site Location Plan

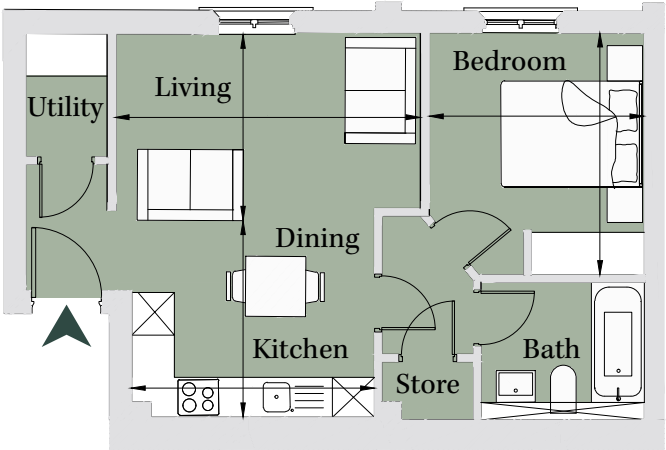


PLOT CE02
1 Bedroom Apartment

Ground Floor		
Total area 484 sq ft (44.9 sq m)		
Kitchen/Dining	9' 1" x 11' 4"	(2.77m x 3.44m)
Living	8' 8" x 14' 2"	(2.63m x 4.31m)
Bedroom	11' 3" x 10'	(3.42m x 3.03m)

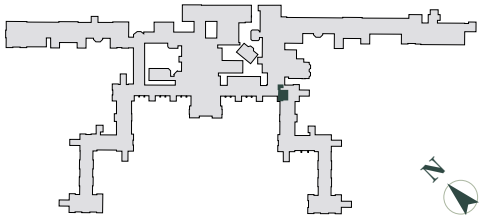


Site Location Plan

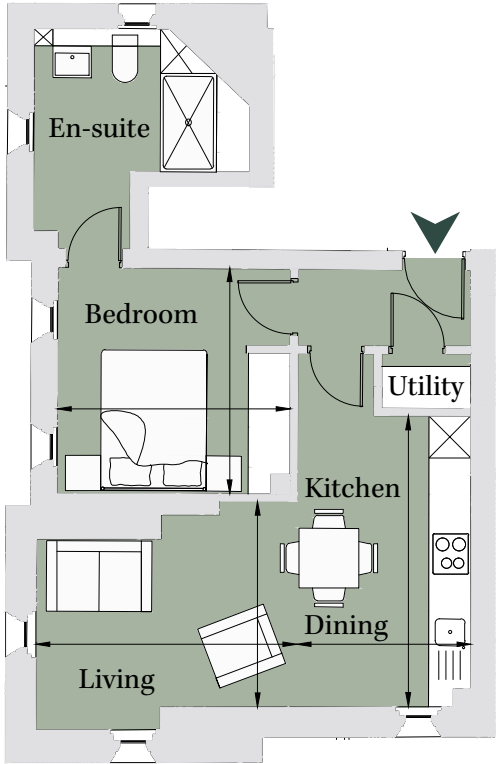


PLOT PR07
1 Bedroom Apartment

Second Floor		
Total area 487 sq ft (45.3 sq m)		
Living	9' 7" x 12' 2"	(2.92m x 3.71m)
Dining/Kitchen	13' 7" x 8' 2"	(4.13m x 2.47m)
Bedroom	10' 7" x 10' 11"	(3.21m x 3.31m)

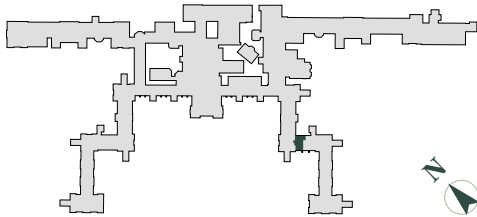


Site Location Plan

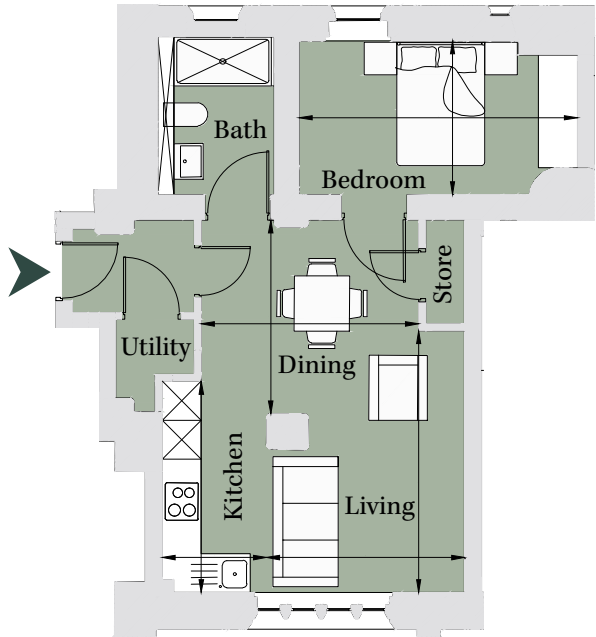


PLOT RO03
1 Bedroom Apartment

Ground Floor		
Total area 498 sq ft (46.3 sq m)		
Kitchen	5' 3" x 10' 8"	(1.60m x 3.25m)
Living	10' x 13' 3"	(3.05m x 4.03m)
Dining	11' x 9' 9"	(3.34m x 2.98m)
Bedroom	14' 1" x 7' 9"	(4.28m x 2.37m)

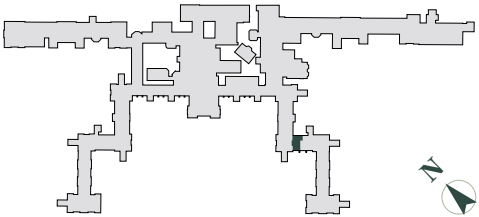


Site Location Plan

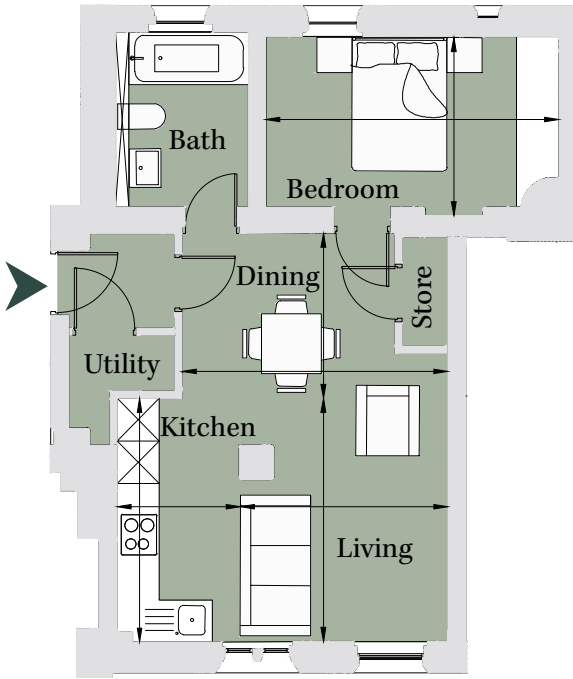


PLOT RO06
1 Bedroom Apartment

	First Floor	
	Total area 498 sq ft (46.3 sq m)	
Kitchen	5' 9" x 11' 5"	(1.75m x 3.47m)
Living	9' 8" x 11' 4"	(2.95m x 3.47m)
Dining	7' 8" x 12' 5"	(2.34m x 3.77m)
Bedroom	8' 4" x 13' 8"	(2.53m x 4.16m)

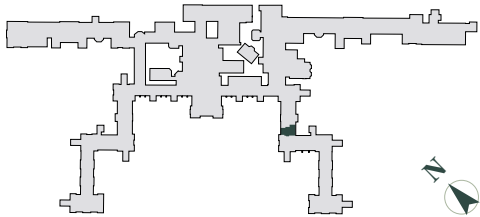


Site Location Plan

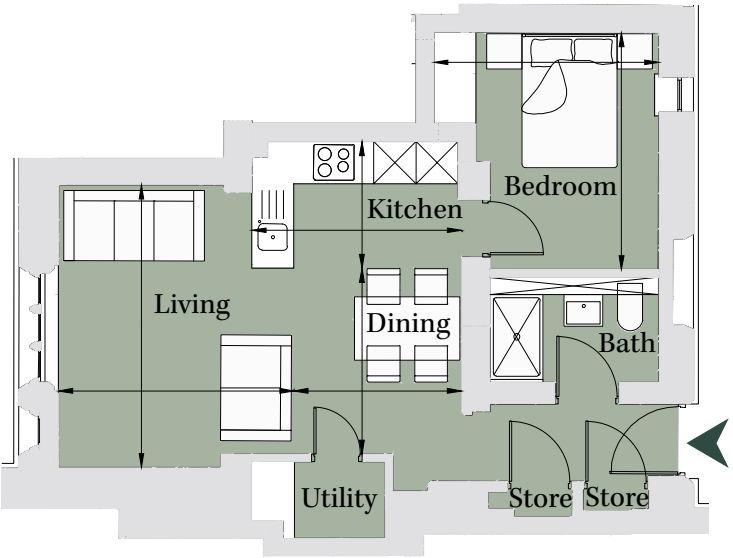


PLOT RO01
1 Bedroom Apartment

	Ground Floor	
	Total area 507 sq ft (47.1 sq m)	
Living	13' 2" x 11'	(4.01m x 3.34m)
Dining	8' 8" x 7' 10"	(2.63m x 2.38m)
Kitchen	5' 11" x 9' 9"	(1.80m x 2.98m)
Bedroom	11' 1" x 10' 6"	(3.36m x 3.19m)

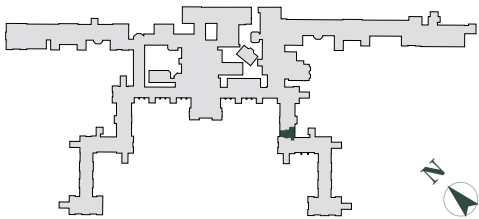


Site Location Plan

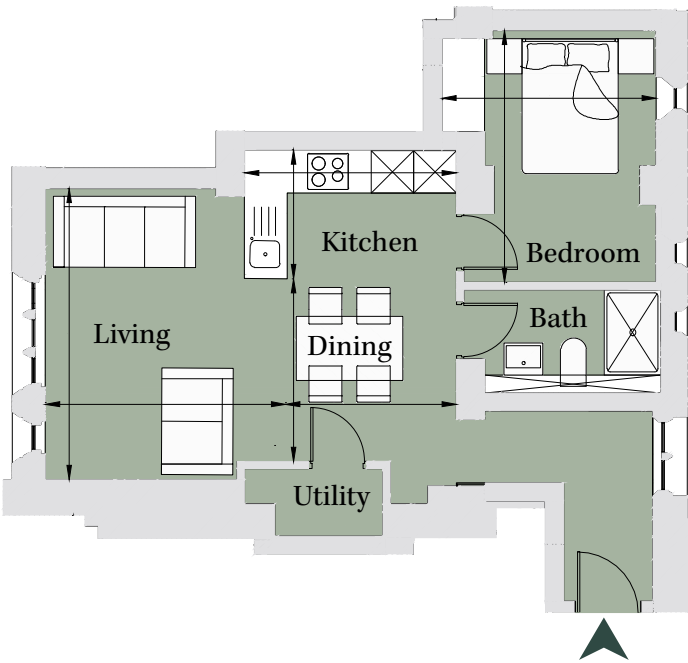


PLOT RO05
1 Bedroom Apartment

First Floor		
Total area 509 sq ft (47.3 sq m)		
Kitchen	9' 9" x 5' 11"	(2.98m x 1.81m)
Dining	7' 11" x 8' 5"	(2.40m x 2.57m)
Living	11' 1" x 13' 5"	(3.38m x 4.09m)
Bedroom	11' 8" x 9' 11"	(3.54m x 3.01m)

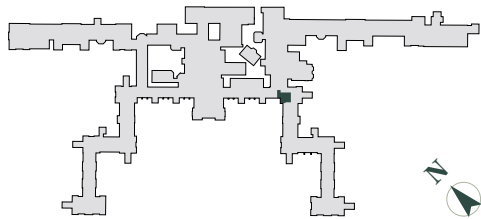


Site Location Plan

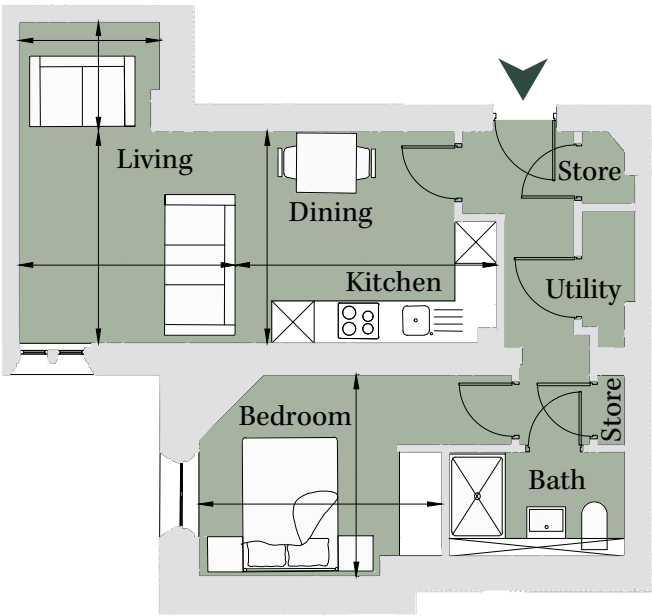


PLOT PR05
1 Bedroom Apartment

First Floor		
Total area 520 sq ft (48.3 sq m)		
Living	9' 11" x 10' 1"	(3.01m x 3.07m)
	5' 1" x 6' 7"	(1.55 x 2.01m)
Dining/Kitchen	9' 11" x 12' 3"	(3.01m x 3.71m)
Bedroom	9' 5" x 11' 4"	(2.86m x 3.45m)

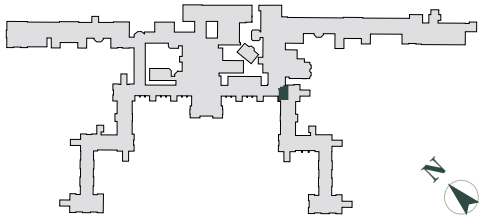


Site Location Plan

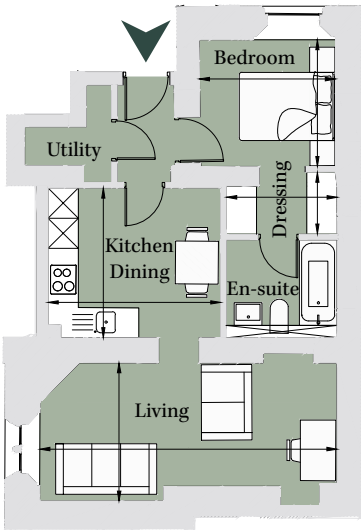


PLOT PR02
1 Bedroom Apartment

	Ground Floor	
	Total area 536 sq ft (49.8 sq m)	
Living/Dining	9' x 19' 4"	(2.74m x 5.89m)
Kitchen	9' 9" x 11' 3"	(2.97m x 3.42m)
Bedroom	8' 3" x 8' 10"	(2.51m x 2.69m)
Dressing	7' 3" x 4' 1"	(2.20m x 1.24m)

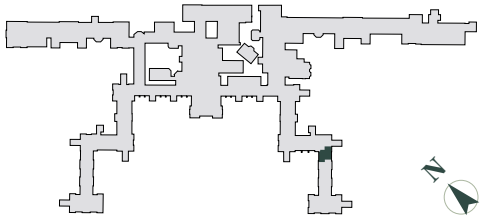


Site Location Plan

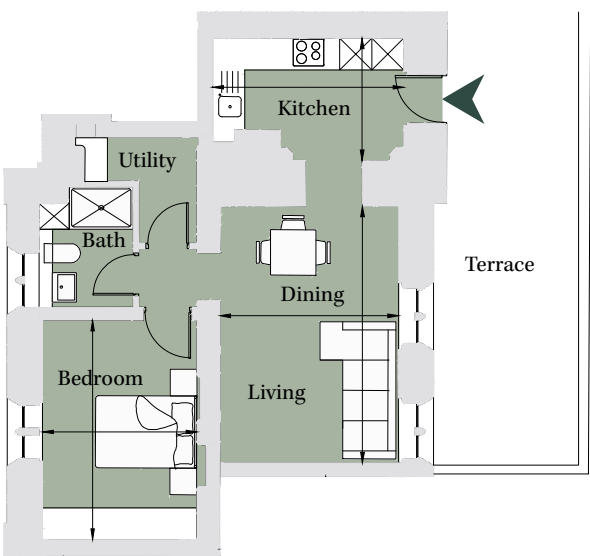


PLOT LU03
1 Bedroom Apartment

	Lower Ground	
	Total area 550 sq ft (51.1 sq m)	
Living/Dining	15' 10" x 11'	(4.81m x 3.34m)
Kitchen	7' 6" x 11' 9"	(2.29m x 3.58m)
Bedroom	13' 6" x 9' 6"	(4.10m x 2.89m)

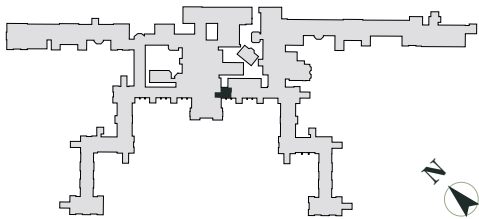


Site Location Plan

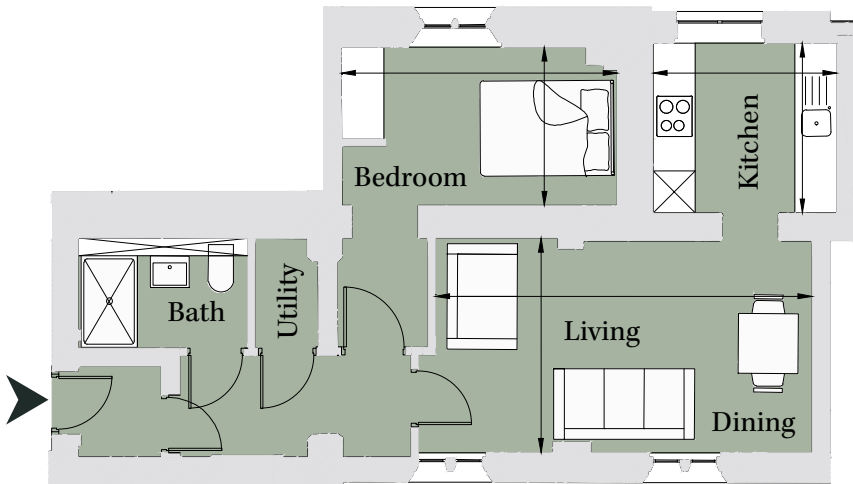


PLOT CC12
1 Bedroom Apartment

First Floor		
Total area 551 sq ft (51.2 sq m)		
Living/Dining	10' x 17' 7"	(3.04m x 5.35m)
Kitchen	7' 11" x 8' 7"	(2.41m x 2.61m)
Bedroom	7' 5" x 12' 11"	(2.24m x 3.92m)

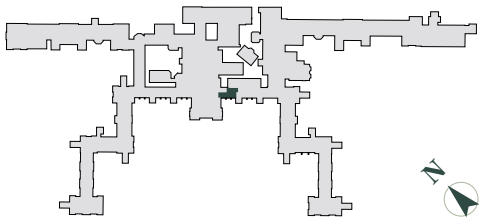


Site Location Plan

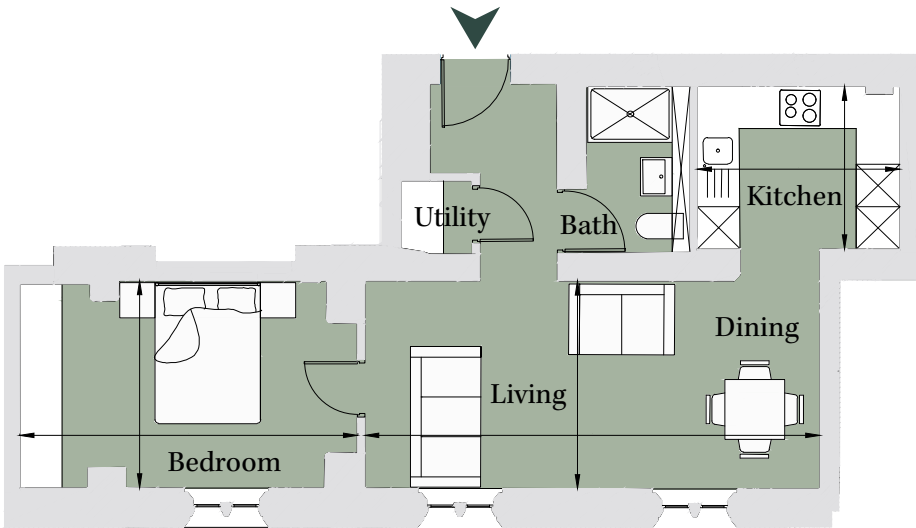


PLOT CE01
1 Bedroom Apartment

Ground Floor		
Total area 562 sq ft (52.2 sq m)		
Kitchen	7' 7" x 9' 5"	(2.31m x 2.87m)
Living/Dining	9' 8" x 21' 3"	(2.94m x 6.46m)
Bedroom	9' 8" x 15' 9"	(2.94m x 4.79m)

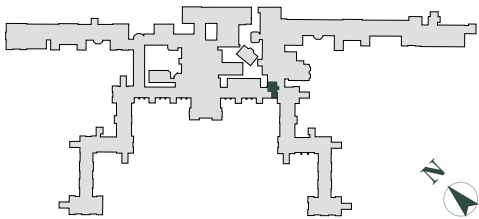


Site Location Plan

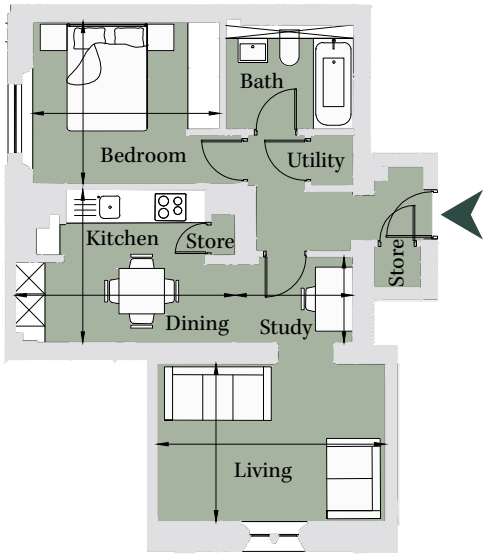


PLOT PR01
1 Bedroom Apartment

Ground Floor		
Total area 572 sq ft (53.2 sq m)		
Living	9' 8" x 14'	(2.95m x 4.26m)
Dining/Kitchen	9' 5" x 13' 6"	(2.86m x 4.11m)
Study	7' 2" x 5' 3"	(2.20m x 1.61m)
Bedroom	9' 11" x 11' 6"	(3.03m x 3.50m)

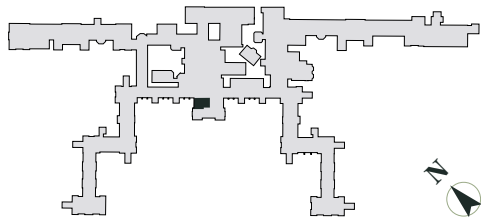


Site Location Plan

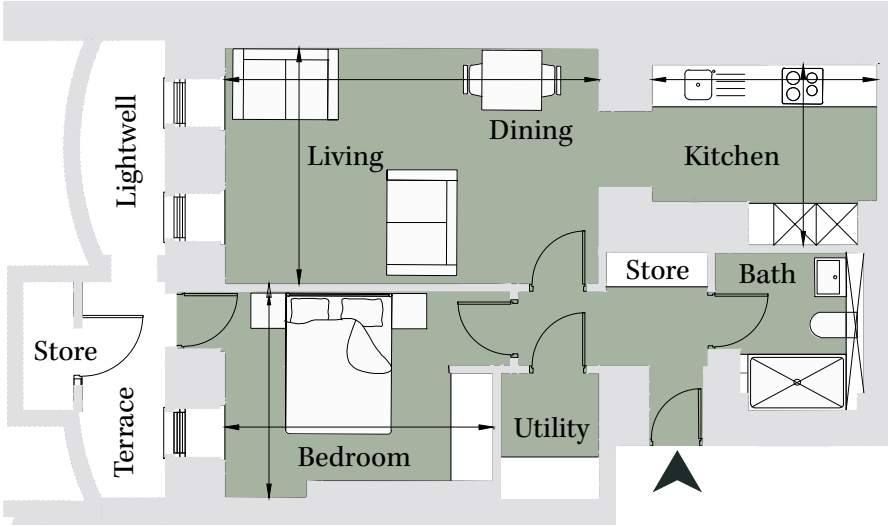


PLOT CC03
1 Bedroom Apartment

Lower Ground		
Total area 575 sq ft (53.5 sq m)		
Living/Dining	11' x 17' 5"	(3.35m x 5.31m)
Kitchen	8' 5" x 10' 6"	(2.56m x 3.20m)
Bedroom	9' 7" x 12' 6"	(2.92m x 3.81m)

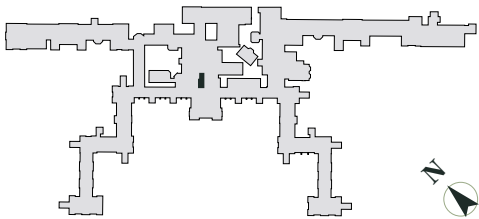


Site Location Plan

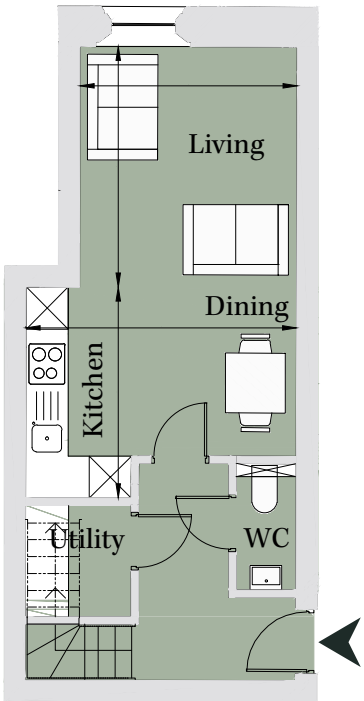


PLOT CC16
1 Bedroom Apartment

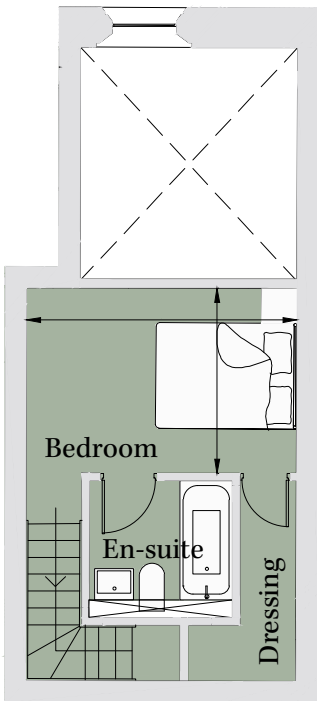
Second/Third Floor		
Total area 576 sq ft (53.5 sq m)		
Living	11' 3" x 10' 2"	(3.42m x 3.08m)
Dining/Kitchen	9' 10" x 12' 7"	(2.99m x 3.84m)
Bedroom	8' 8" x 12' 7"	(2.63m x 3.84m)



Site Location Plan



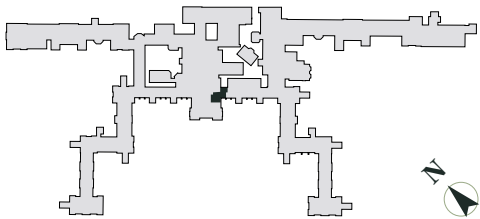
Second Floor



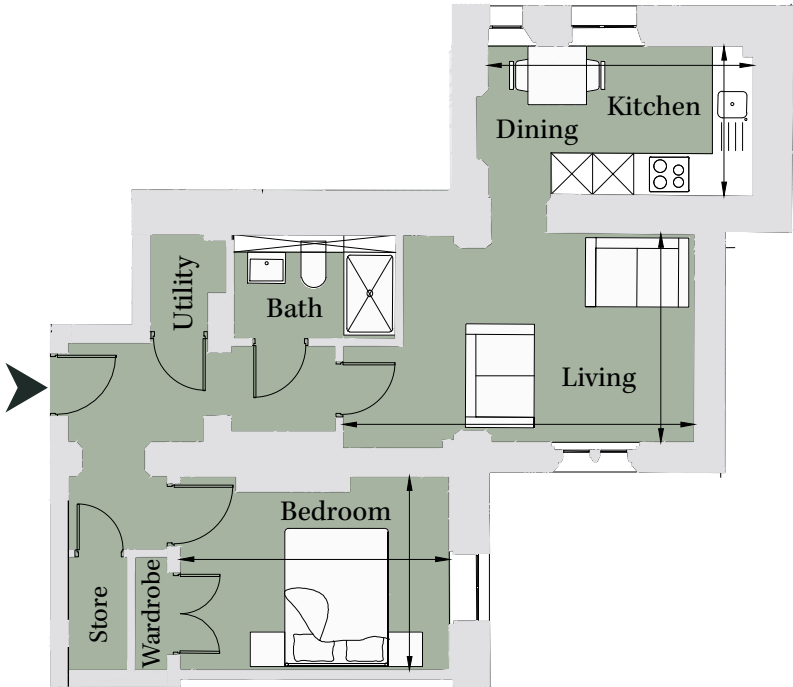
Third Floor

PLOT CC19
1 Bedroom Apartment

Second Floor		
Total area 579 sq ft (53.8 sq m)		
Living	9' 11" x 16' 9"	(3.02m x 5.10m)
Dining/Kitchen	7' 2" x 12' 8"	(2.17m x 3.86m)
Bedroom	9' 3" x 12' 10"	(2.81m x 3.91m)

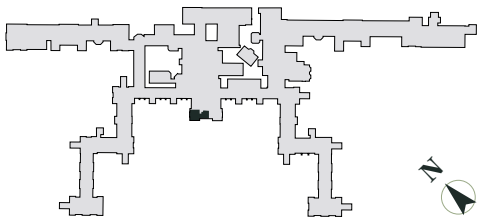


Site Location Plan

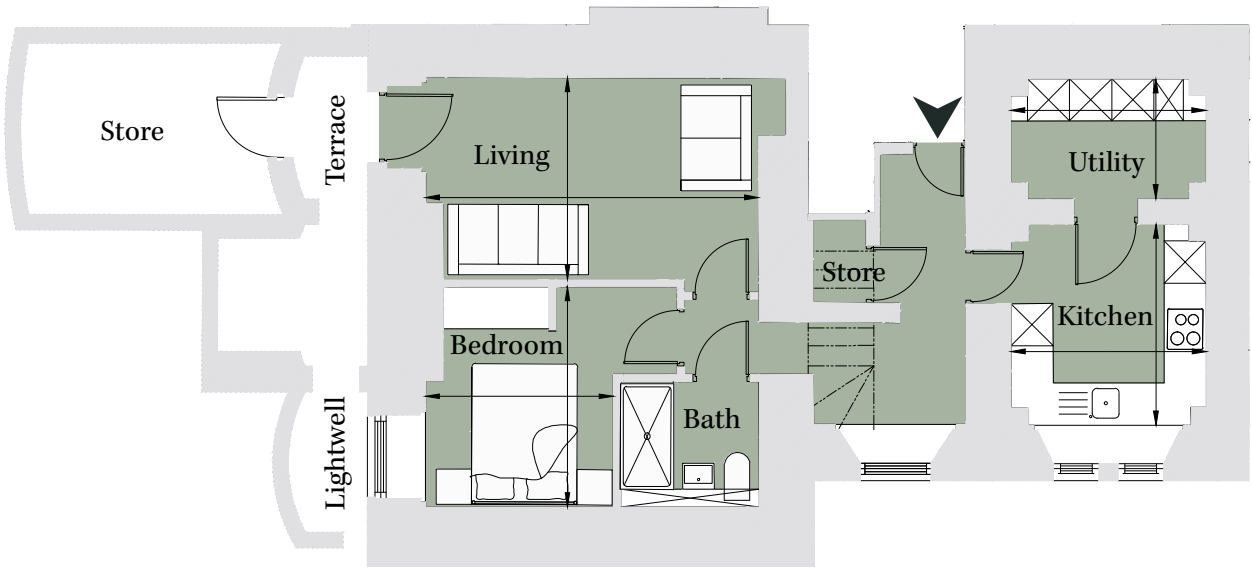


PLOT CC02
1 Bedroom Apartment

	Lower Ground	
	Total area 583 sq ft (54.2 sq m)	
Living	9' 5" x 15' 7"	(2.87m x 4.73m)
Kitchen	9' 5" x 9' 1"	(2.85m x 2.77m)
Bedroom	10' 8" x 10' 1"	(3.12m x 2.67m)
Utility	9' 2" x 5' 8"	(2.79m x 1.71m)

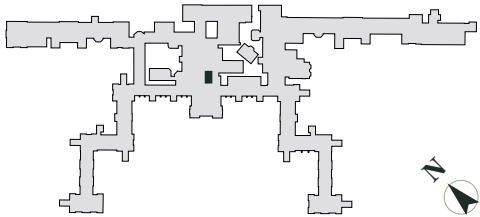


Site Location Plan

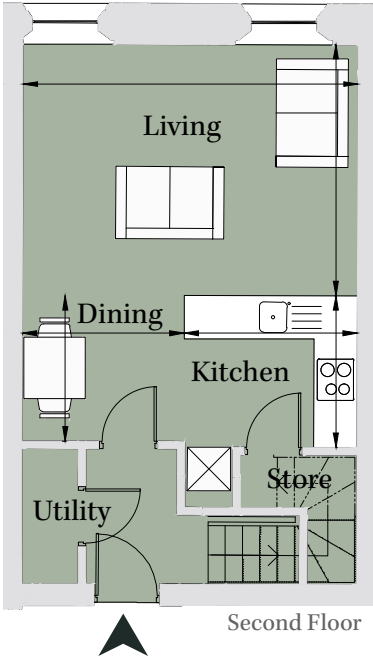


PLOT CC17
1 Bedroom Apartment

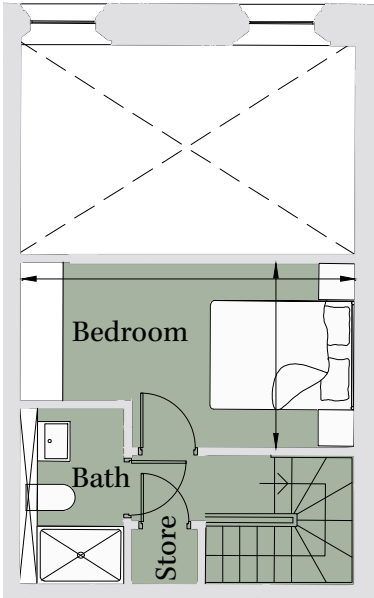
	Second/Third Floor	
	Total area 596 sq ft (55.4 sq m)	
Kitchen	7' 11" x 6' 11"	(2.40m x 2.10m)
Living	15' 3" x 11' 5"	(4.64m x 3.48m)
Dining	7' 4" x 6' 7"	(2.24m x 2.02m)
Bedroom	8' 5" x 15' 2"	(2.55m x 4.61m)



Site Location Plan



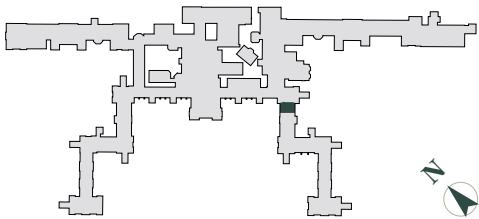
Second Floor



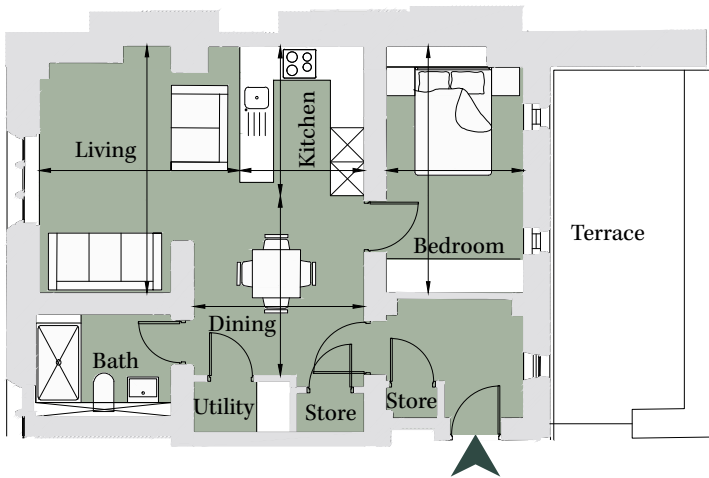
Third Floor

PLOT PW01
1 Bedroom Apartment

Ground Floor		
Total area 605 sq ft (56.2 sq m)		
Living	14' 4" x 11' 7"	(4.36m x 3.53m)
Dining	10' 5" x 9' 11"	(3.17m x 3.01m)
Kitchen	8' 8" x 7' 3"	(2.63m x 2.20m)
Bedroom	13' 1" x 7' 11"	(4.00m x 2.41m)

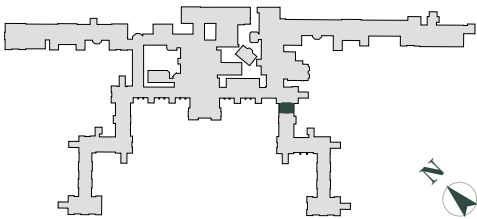


Site Location Plan

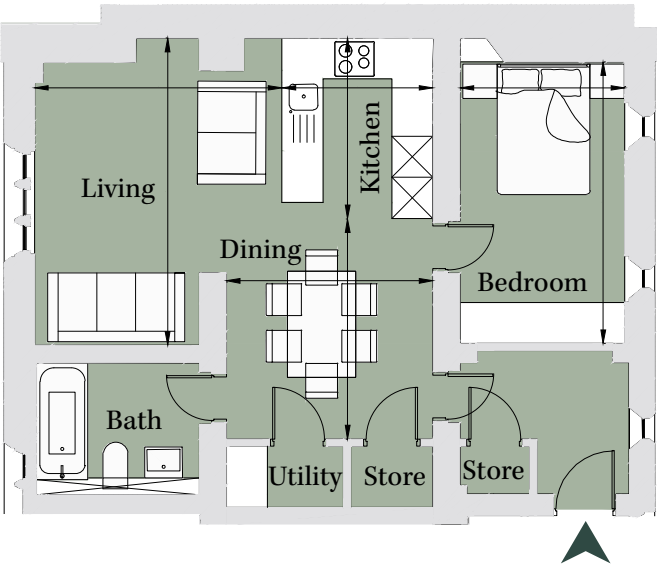


PLOT PW03
1 Bedroom Apartment

First Floor		
Total area 611 sq ft (56.8 sq m)		
Living	14' 9" x 11' 10"	(4.48m x 3.60m)
Dining	10' 7" x 9' 11"	(3.21m x 3.01m)
Kitchen	8' 8" x 7' 3"	(2.63m x 2.20m)
Bedroom	13' 6" x 7' 11"	(4.11m x 2.40m)

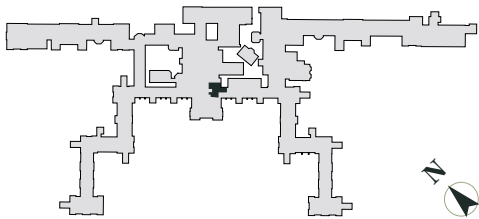


Site Location Plan

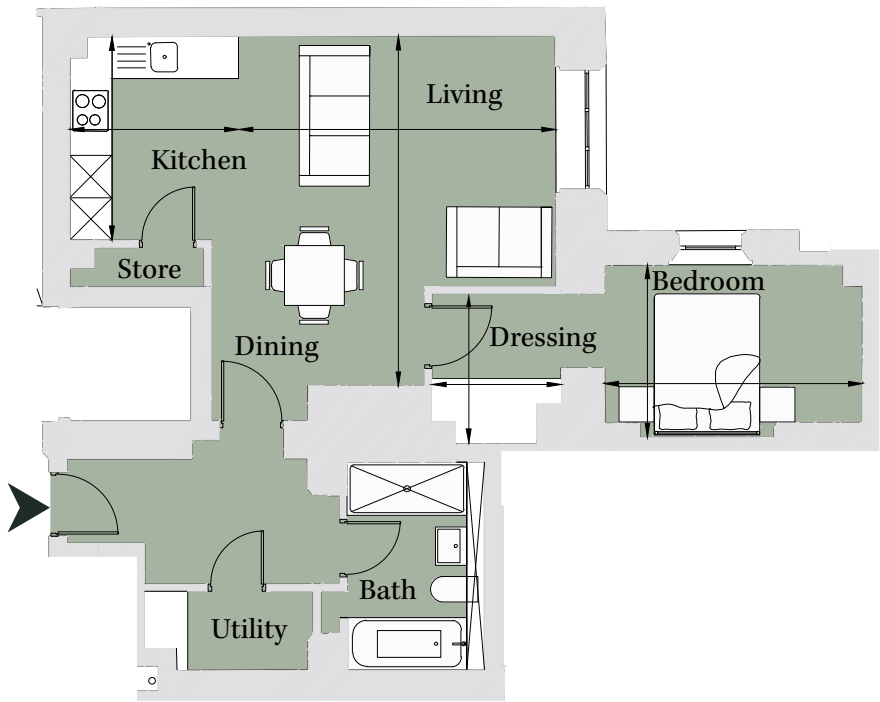


PLOT CC06
1 Bedroom Apartment

Ground Floor		
Total area 674 sq ft (62.6 sq m)		
Kitchen	7' 11" x 9' 6"	(2.40m x 2.89m)
Living/Dining	14' 9" x 16' 4"	(4.50m x 4.97m)
Bedroom	8' 1" x 12' 1"	(2.45m x 3.67m)
Dressing	6' x 7'	(1.84m x 2.14m)



Site Location Plan



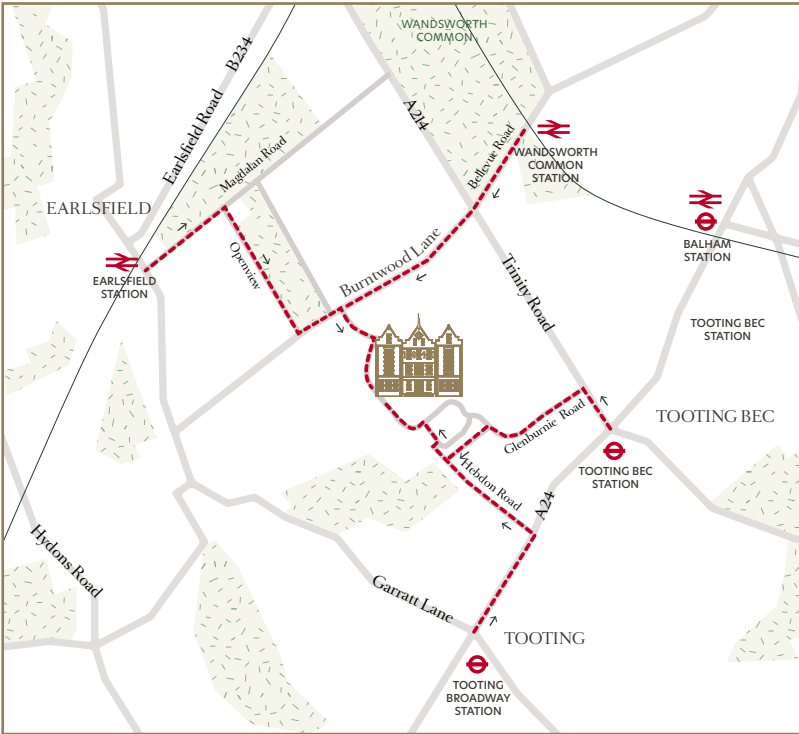
CGI is indicative only



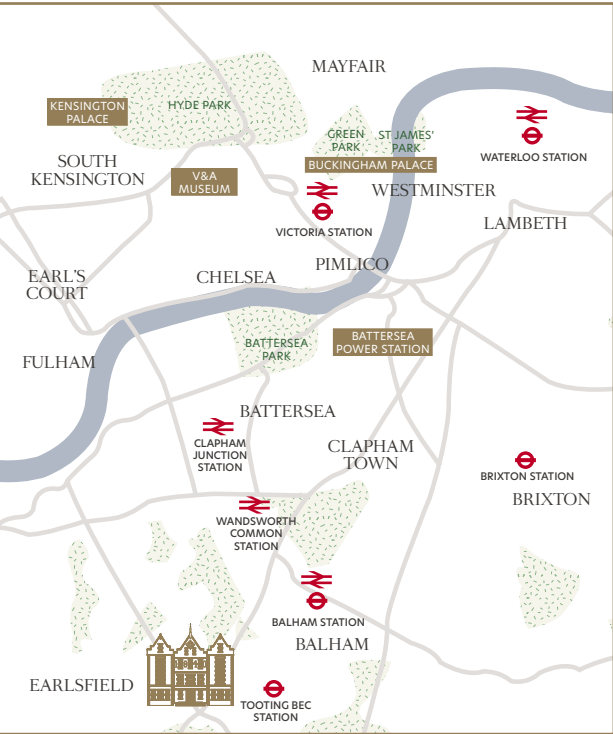
The 1840 Sales Suite

Diana House, 2 Holt Gardens
London SW17 7DJ

Telephone: 020 3993 3102
Email: The1840@cityandcountry.co.uk
Web address: cityandcountry.co.uk/The1840



Entrance to Sales Suite is from Burntwood Lane.
Please use postcode SW17 7DJ.



CHERISHING
HERITAGE
CREATING THE
FUTURE



DISCLAIMER. CGIs are indicative only. Photography is indicative only and of other City & Country Show Homes. Travel times sources from tfl.gov.uk, Google maps, and National Rail. Please be aware that the information contained in this document is indicative and intended to act as a guide only to the finished product and the properties available. Due to the City & Country policy of continual improvement, the finished product may vary from the information provided and City & Country reserves the right to amend the specification. The contents herein shall not form any part of any contract or be a representation including such contract. These properties are offered subject to availability. Applicants are advised to contact the appointed agents to ascertain the availability of any particular type of property. These particulars should not be relied upon as statements of fact or representation and applicants must satisfy themselves as to their correctness. The 1840, St George's Gardens is a marketing name and does not form a part of the postal address. This development includes communal land and/or shared facilities. A management company will be set up by City & Country to ensure that these areas are continually managed to a high standard. Product related images contained within this brochure are from other City & Country developments and do not necessarily relate exactly to the specification of The 1840. Produced June 2021.



CITY & COUNTRY

Heritage homes in the heart of South West London

cityandcountry.co.uk