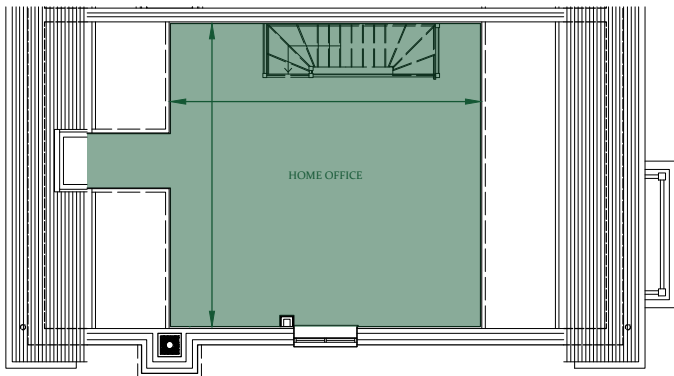


# Floorplan - Plot EG08

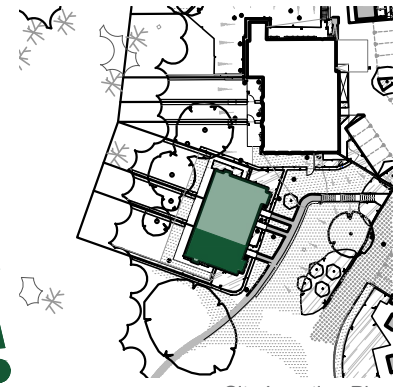
3 Bedroom End-Terrace Cottage with Private Garden - Freehold  
 Ground, First & Second Floor  
 Total Area: 2,153 sq ft (200.0 sq m)  
 NSA: 1,894 sq ft (176.0 sq m)



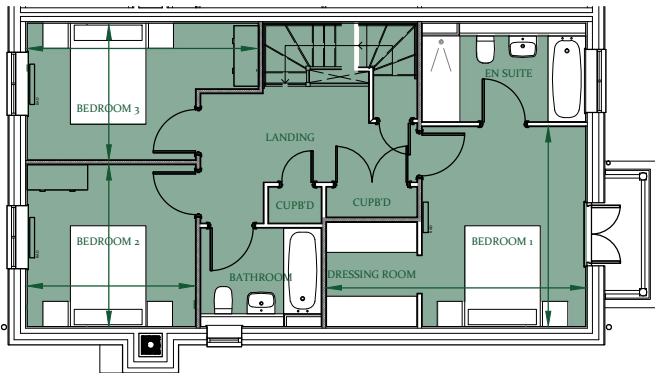
Living (max.)	19'9" x 14'8"	(6m x 4.4m)
Kitchen/Dining (max.)	15'4" x 12'5"	(4.6m x 3.7m)
Master Bedroom (max.)	16'11" x 13'	(5.1m x 3.9m)
Bedroom 2 (max.)	11' x 10'6"	(3.3m x 3.2m)
Bedroom 3 (max.)	15' x 8'11"	(4.5m x 2.7m)
Home Office (max.)	20'2" x 19'9"	(6.1m x 6.0m)



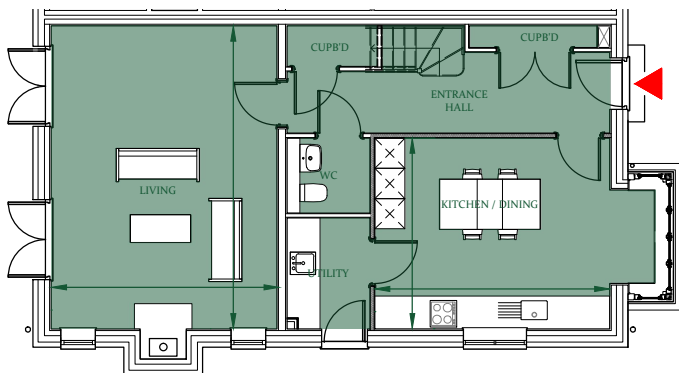
Second Floor Plan



Site Location Plan



First Floor Plan



Ground Floor Plan

01730 81 79 79

e: sales@cityandcountry.co.uk | w: www.cityandcountry.co.uk



The information in this document is intended as a guide only and is subject to change without prior notice. Accordingly, due to the City & Country policy of continual improvement, the finished product may vary from the information provided and City & Country reserves the right to amend the specification. All dimensions stated are approximate only with maximum dimensions and may alter through the construction phase and with interior finishes. You are therefore advised not to order any carpets, appliances or other goods which depend upon accurate dimensions before carrying out a check measure within your reserved property.  
 April 2021.