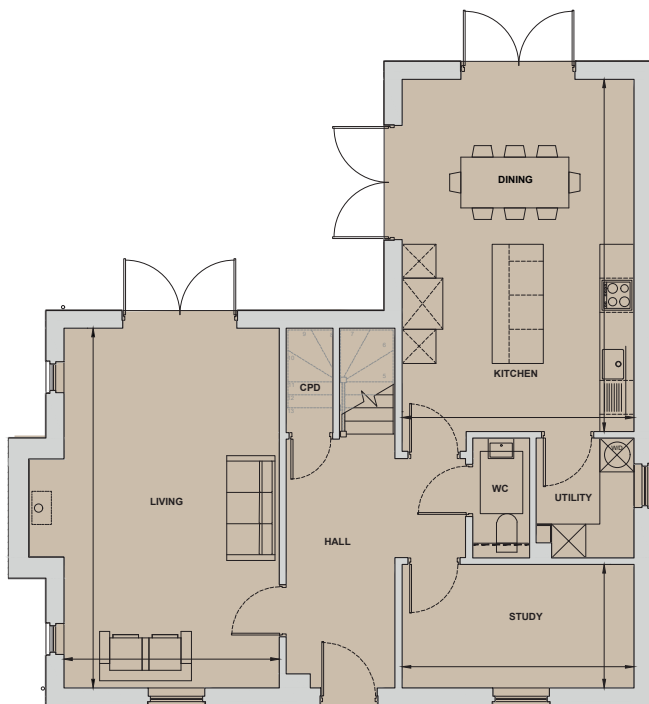


Oak

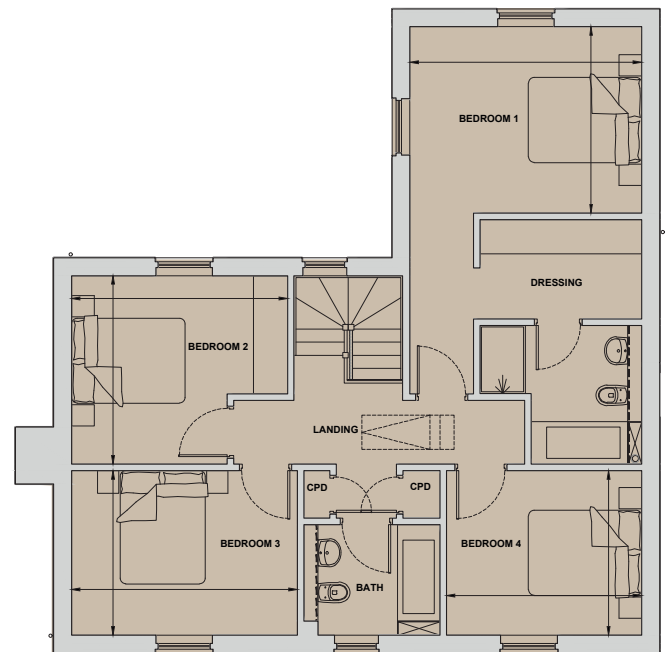
4 Bedroom Home
Plots 26*, 27 & 36

Living	3.80m x 6.34m	12'6" x 20'10"
Kitchen/Dining	4.09m x 6.21m	13'5" x 20'4"
Study	4.09m x 2.17m	13'5" x 7'2"
Bedroom 1	4.09m x 3.29m	13'5" x 10'9"
Bedroom 2	3.81m x 3.32m	12'6" x 10'11"
Bedroom 3	3.98m x 2.90m	13'1" x 9'6"
Bedroom 4	3.44m x 2.90m	13'4" x 9'6"
Total Internal Area	163.2 sq m	1,757 sq ft

*Handed to floorplan shown



Ground Floor



First Floor