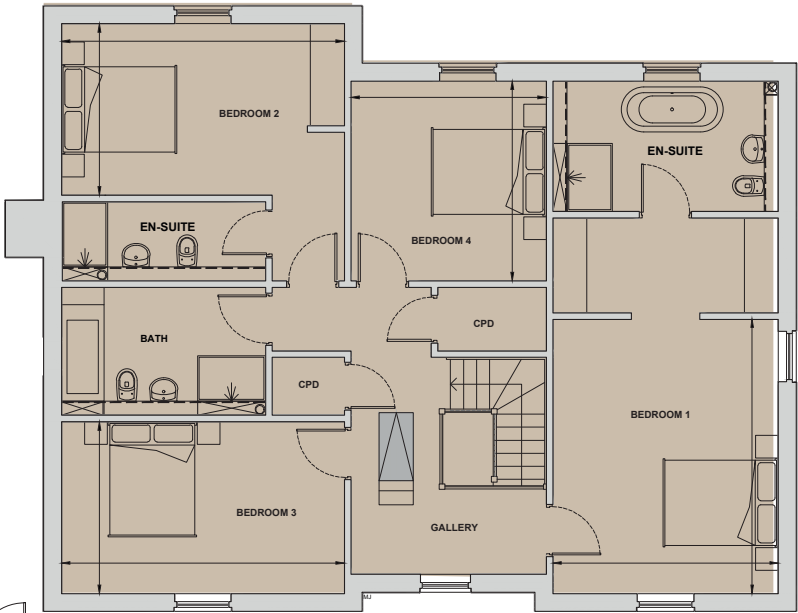


Alder

4/5 Bedroom Home
Plots 52, 53, 54* & 57

Living	4.99m x 7.26m	16'4" x 23'10"
Kitchen	3.97m x 4.50m	13'1" x 14'9"
Dining/Family	5.42m x 4.54m	17'10" x 14'11"
Study/Bedroom 5	4.99m x 2.68m	16'4" x 8'9"
Bedroom 1	3.97m x 4.85m	13'1" x 15'11"
Bedroom 2	4.99m x 3.02m	16'4" x 9'11"
Bedroom 3	4.99m x 3.03m	16'4" x 9'11"
Bedroom 4	3.45m x 3.53m	11'4" x 11'7"
Total Internal Area	236 sq m	2,540 sq ft

*Handed to floorplan shown



First Floor



Ground Floor