



## Floorplan – Plot 04-13

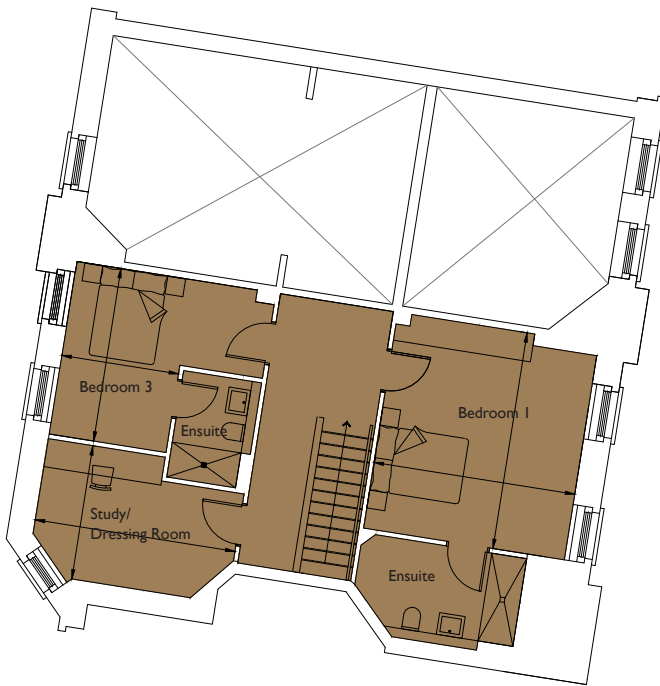
3 bedroom and study apartment

First and Mezzanine Floor

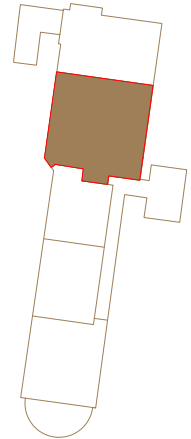
Total area 2156sq ft (200.3sq m)

# THE GENERAL BRISTOL

Living	21ft 12in x 13ft 1in	(6.7m x 4.7m)
Dining/ Kitchen	31ft 2in x 14ft 1in	(9.5m x 4.3m)
Bedroom 1	15ft 1in x 14ft 1in	(4.6m x 4.3m)
Bedroom 2	13ft 9in x 12ft 2in	(4.2m x 3.7m)
Bedroom 3	12ft 2in x 8ft 2in	(3.7m x 2.5m)
Study/ Dressing	14ft 1in x 9ft 6in	(4.3m x 2.9m)



First Floor Mezzanine



First Floor

01174 539 549  
[sales@cityandcountry.co.uk](mailto:sales@cityandcountry.co.uk)  
[www.cityandcountry.co.uk](http://www.cityandcountry.co.uk)

CITY & COUNTRY