



# THE GENERAL

BRISTOL

## Floorplan – Plot 04-12

3 bedroom apartment

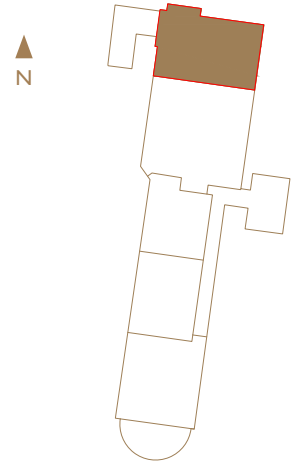
First and Mezzanine Floor

Total area 1551sq ft (144.1sq m)

Living/Dining	24ft 11in x 13ft 9in	(7.6m x 4.2m)
Kitchen	10ft 10in x 7ft 7in	(3.3m x 2.3m)
Bedroom 1	10ft 10in x 12ft 2in	(3.3m x 3.7m)
Bedroom 2	10ft 6in x 19ft 4in	(3.2m x 5.9m)
Bedroom 3	9ft 11in x 14ft 5in	(3.0m x 4.4m)



First Floor Mezzanine



First Floor

01174 539 549  
sales@cityandcountry.co.uk  
www.cityandcountry.co.uk

