

PHASE 1
FLOORPLANS

TWO AND THREE BEDROOM APARTMENTS

THE
1840
ST GEORGE'S GARDENS

CITY & COUNTRY

THE 1840, ST GEORGE'S GARDENS

*Luxurious 1, 2 and 3 bedroom
conversion apartments in the
heart of South West London*

EXPLORING THE 1840



SPRINGFIELD DRIVE

THE
BALLROOM

THE
CHAPEL

PHASE 1

ST GEORGE'S
GARDENS

SPRINGFIELD PARK

LAPIDGE DRIVE

HOMES OF DISTINCTION

A superior specification

Discover the superbly appointed and excellently crafted Grade II listed conversion apartments in the heart of South West London.

Materials and colours seamlessly combine modern city living with period grandeur. A sense of natural simplicity and informal luxury will be created throughout each apartment.

Walk into The 1840 and you will see that careful thought, together with superior build quality and finishes, create living spaces that not only function perfectly but look and feel spectacular.





CGI indicative only

PLOT RO02
2 Bedroom Apartment

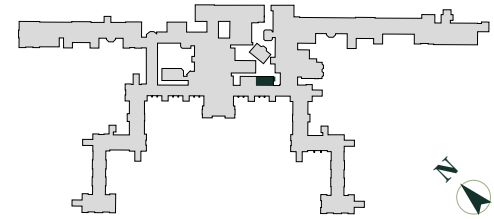
		Ground Floor
		Total area 652 sq ft (60.6 sq m)
Living/Dining	13' x 11' 10"	(3.95m x 3.60m)
Kitchen	8' x 10' 9"	(2.42m x 3.27m)
Bedroom 1	13' 5" x 10' 2"	(4.08m x 3.11m)
Bedroom 2	8' 3" x 12' 1"	(2.51m x 3.68m)



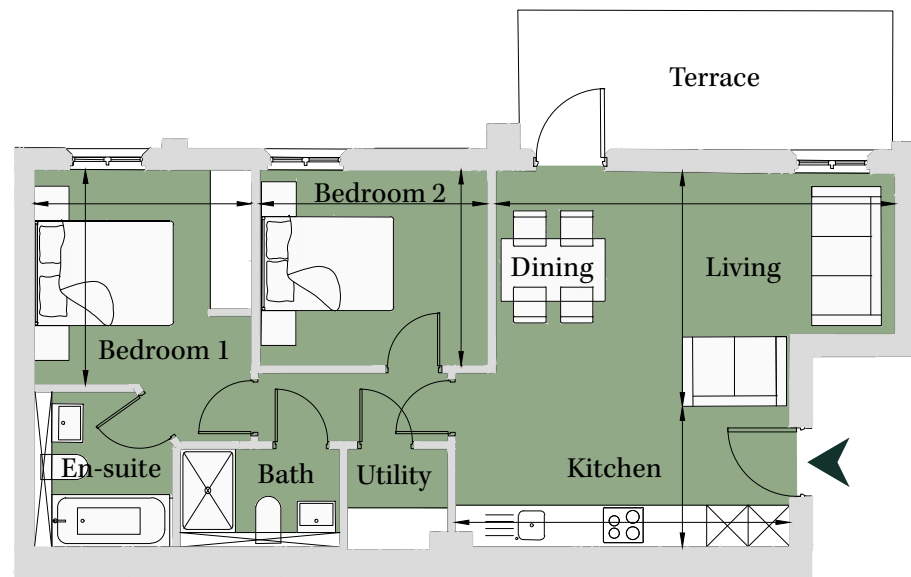
PLOT CE03
2 Bedroom Apartment

Ground Floor
Total area 670 sq ft (62.3 sq m)

Kitchen	6' 8" x 15' 10"	(2.02m x 4.81m)
Living/Dining	11' 1" x 18' 11"	(3.37m x 5.75m)
Bedroom 1	10' 2" x 10' 3"	(3.09m x 3.12m)
Bedroom 2	9' 3" x 10' 9"	(2.80m x 3.26m)



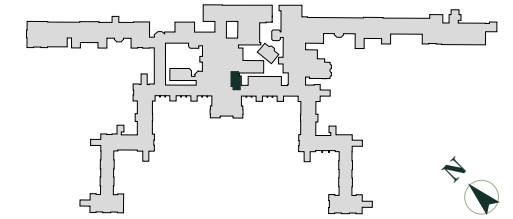
Site Location Plan



PLOT CC11
2 Bedroom Apartment

First Floor
Total area 672 sq ft (62.4 sq m)

Living	7' 10" x 12' 2"	(2.37m x 3.70m)
Dining/Kitchen	9' 3" x 16' 9"	(2.80m x 5.10m)
Bedroom 1	10' 5" x 8' 8"	(3.16m x 2.64m)
	5' 6" x 4' 3"	(1.68m x 1.30m)
Bedroom 2	8' 10" x 11' 9"	(2.69m x 3.58m)



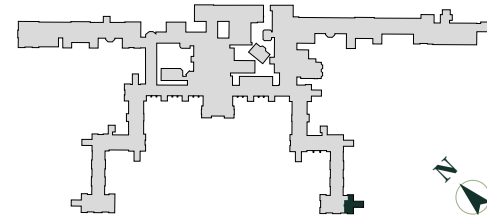
Site Location Plan



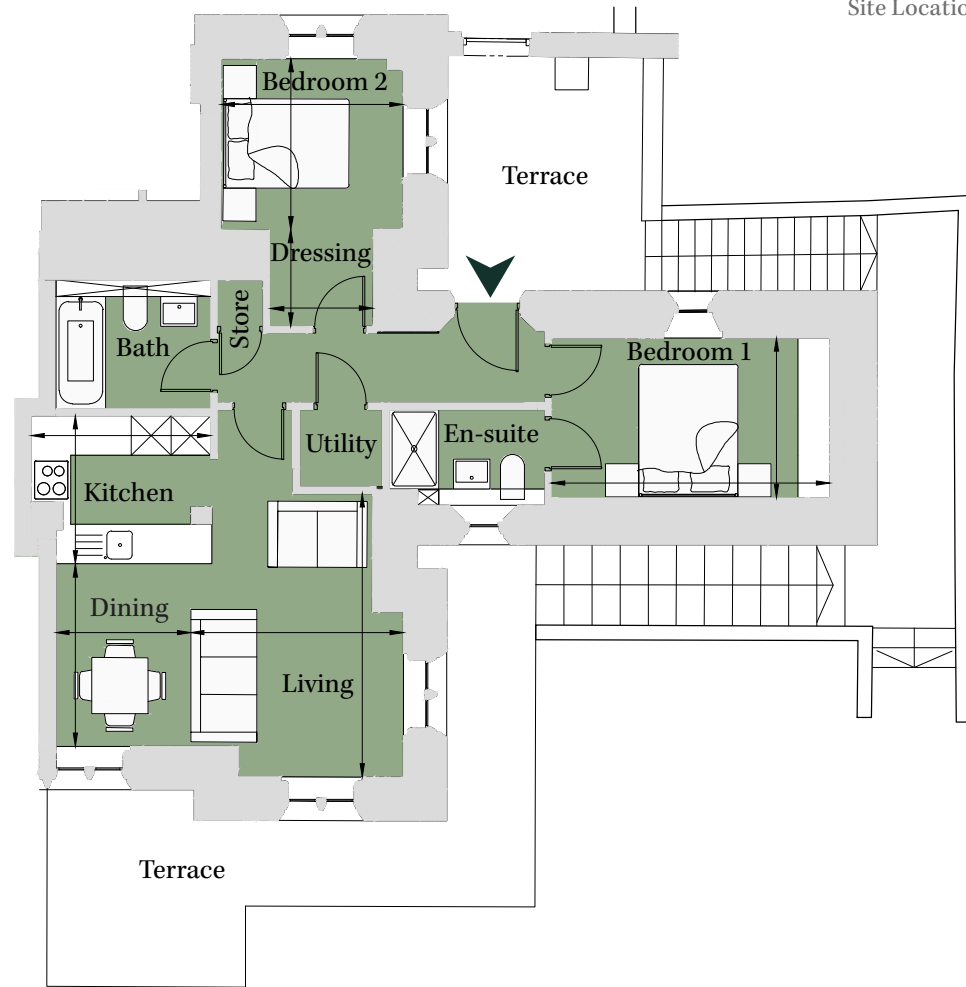
PLOT JA02
2 Bedroom Apartment

Lower Ground
Total area 673 sq ft (62.5 sq m)

Kitchen	8' 11" x 7' 4"	(2.71m x 2.24m)
Living	10' 6" x 14' 1"	(3.21m x 4.28m)
Dining	6' 8" x 9' 1"	(2.04m x 2.76m)
Bedroom 1	7' 11" x 13' 10"	(2.41m x 4.20m)
Bedroom 2	9' x 8' 6"	(2.75m x 2.59m)
Dressing	5' 2" x 4' 9"	(1.57m x 1.46m)



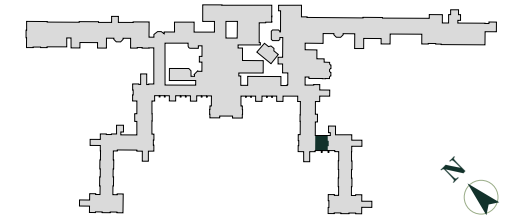
Site Location Plan



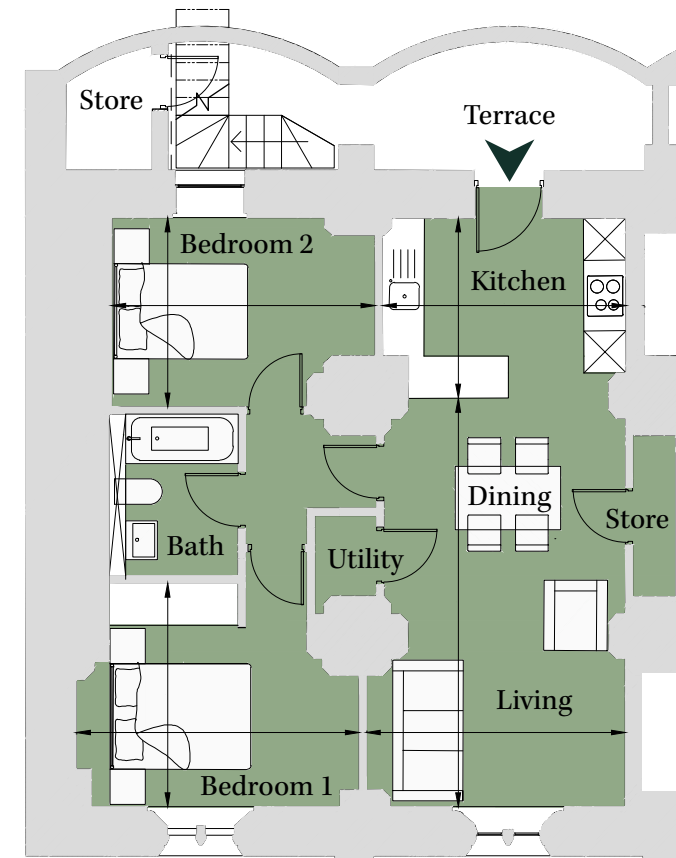
PLOT LU01
2 Bedroom Apartment

Lower Ground
Total area 688 sq ft (63.9 sq m)

Living/Dining	19' 1" x 12' 1"	(5.80m x 3.68m)
Kitchen	8' 5" x 11' 5"	(2.56m x 3.46m)
Bedroom 1	10' 5" x 13' 2"	(3.18m x 4.02m)
Bedroom 2	8' 10" x 12' 4"	(2.69m x 3.74m)



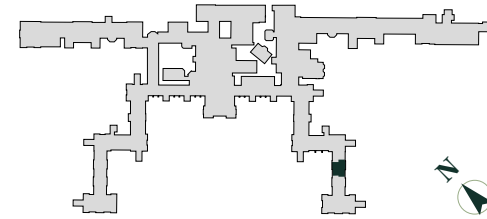
Site Location Plan



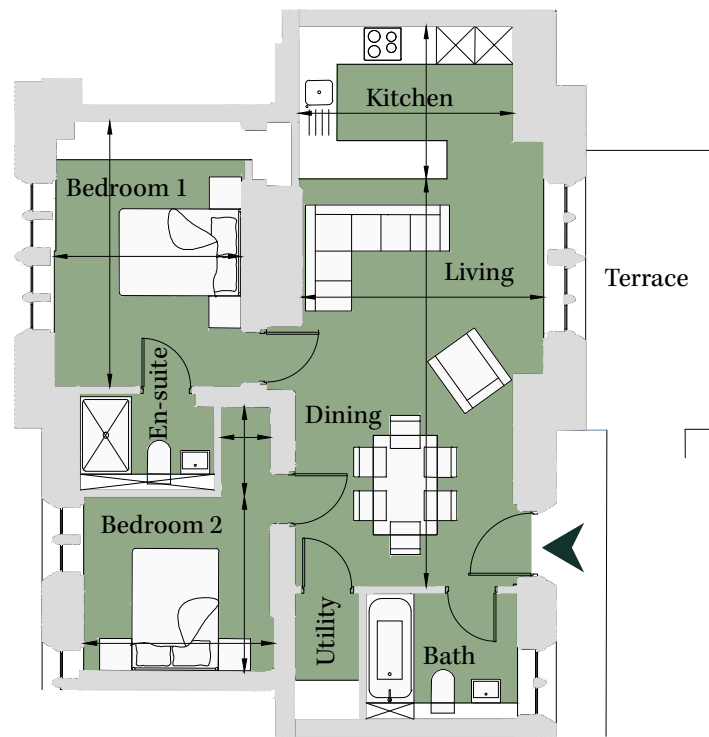
PLOT LU04
2 Bedroom Apartment

Lower Ground
Total area 740 sq ft (68.8 sq m)

Living/Dining	20' 10" x 12' 4"	(6.34m x 3.76m)
Kitchen	7' 10" x 11'	(2.38m x 3.34m)
Bedroom 1	13' 7" x 9' 7"	(4.13m x 2.91m)
Bedroom 2	9' x 9' 9"	(2.72m x 2.96m)
	4' 7" x 2' 6"	(1.40m x 0.76m)



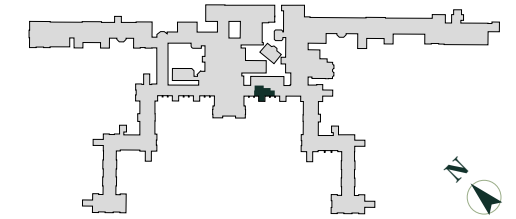
Site Location Plan



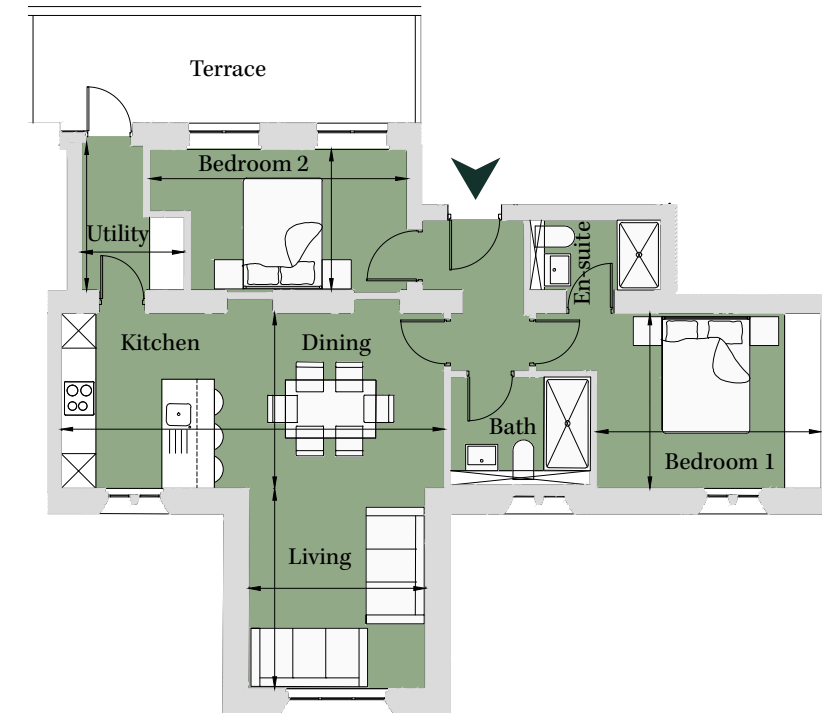
PLOT CE07
2 Bedroom Apartment

First Floor
Total area 779 sq ft (72.4 sq m)

Kitchen/Dining	9' 11" x 21' 7"	(3.00m x 6.58m)
Living	11' 3" x 9' 11"	(3.42m x 3.03m)
Bedroom 1	9' 10" x 12' 8"	(3.00m x 3.85m)
Bedroom 2	7' 11" x 14' 6"	(2.41m x 4.42m)
Utility	5' 10" x 8' 4"	(1.77m x 2.54m)

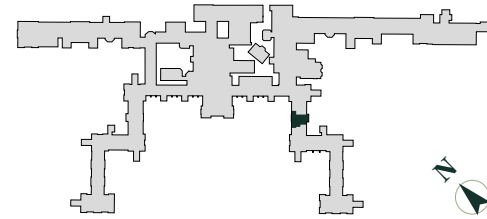


Site Location Plan

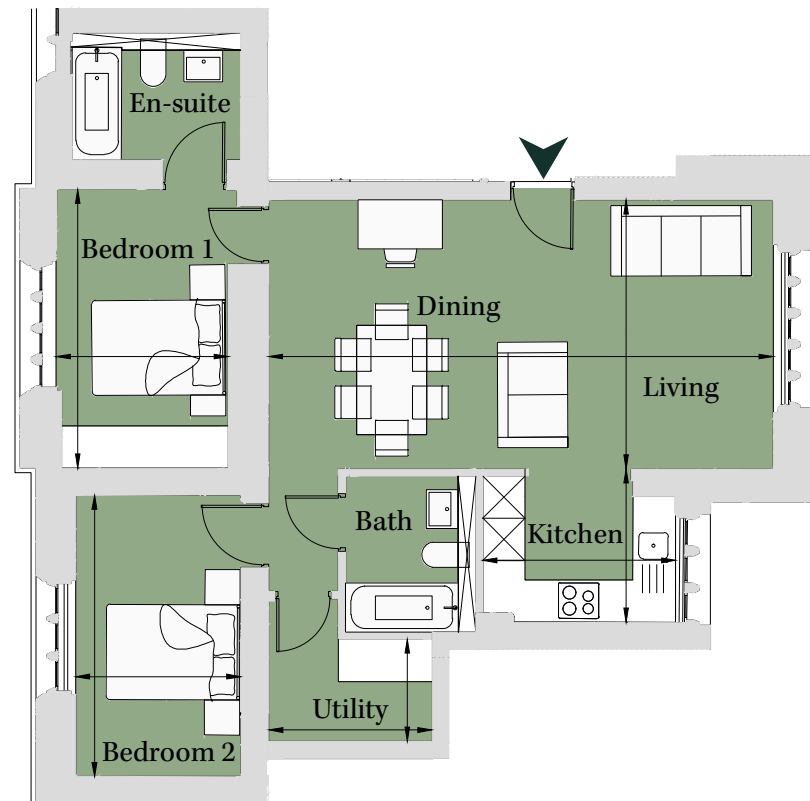


PLOT PW02
2 Bedroom Apartment

Ground Floor		
Total area 786 sq ft (73 sq m)		
Living/Dining	12' 7" x 23' 7"	(3.82m x 7.17m)
Kitchen	7' 2" x 9'	(2.17m x 2.74m)
Utility	7' 8" x 4' 9"	(2.33m x 1.45m)
Bedroom 1	13' x 8'	(3.96m x 2.44m)
Bedroom 2	13' 1" x 7' 8"	(3.99m x 2.34m)

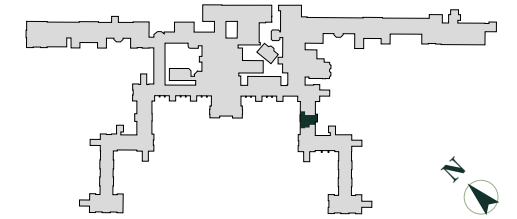


Site Location Plan

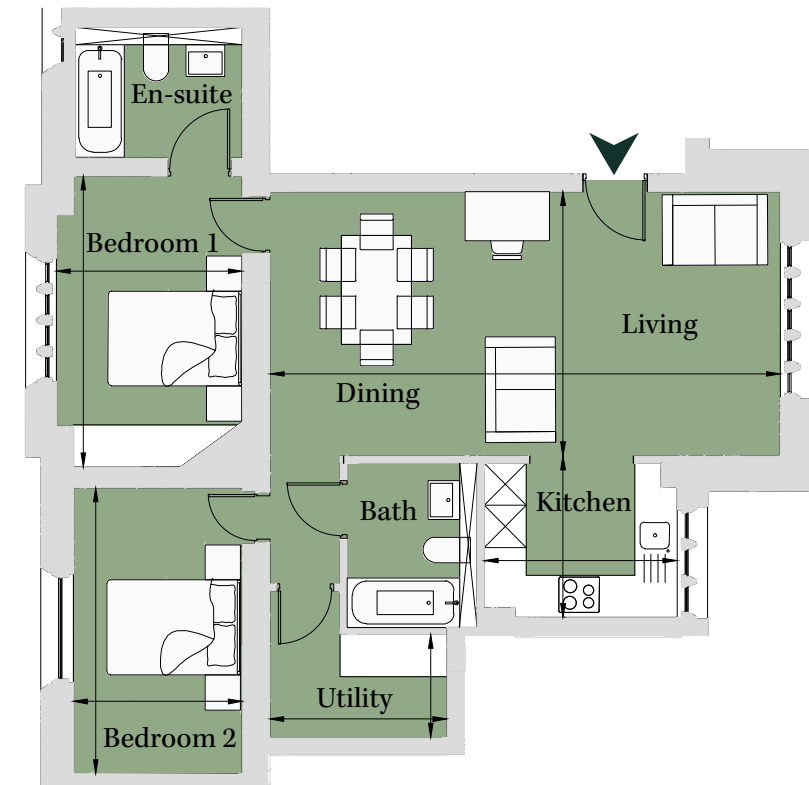


PLOT PW04
2 Bedroom Apartment

First Floor		
Total area 799 sq ft (74.2 sq m)		
Living/Dining	12' 4" x 23' 10"	(3.75m x 7.26m)
Kitchen	7' 6" x 9'	(2.29m x 2.74m)
Utility	8' 3" x 4' 10"	(2.52m x 1.47m)
Bedroom 1	13' 7" x 8' 8"	(4.13m x 2.64m)
Bedroom 2	13' 4" x 7' 11"	(4.06m x 2.40m)



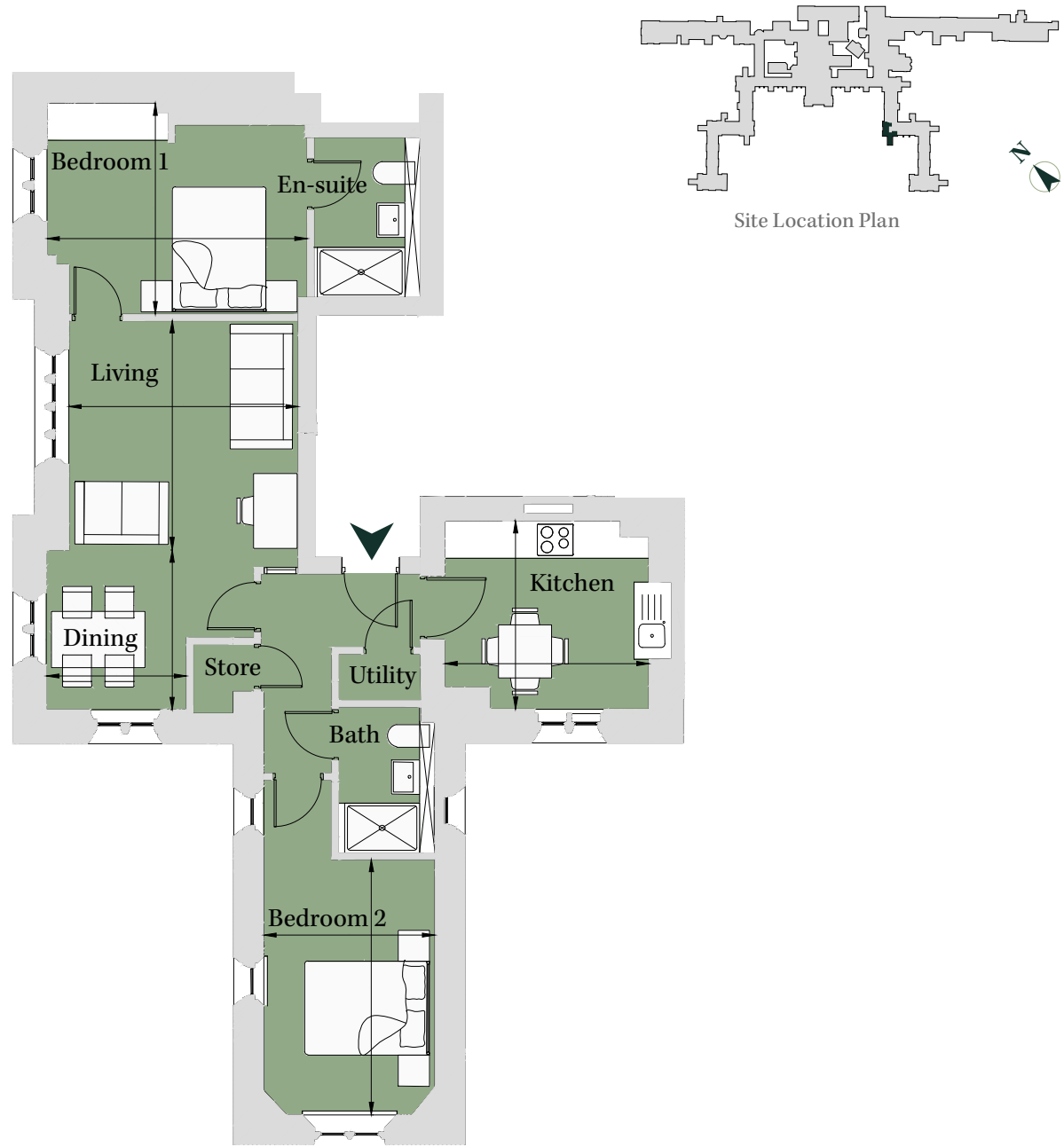
Site Location Plan



PLOT RO04
2 Bedroom Apartment

First Floor
Total area 809 sq ft (75.2 sq m)

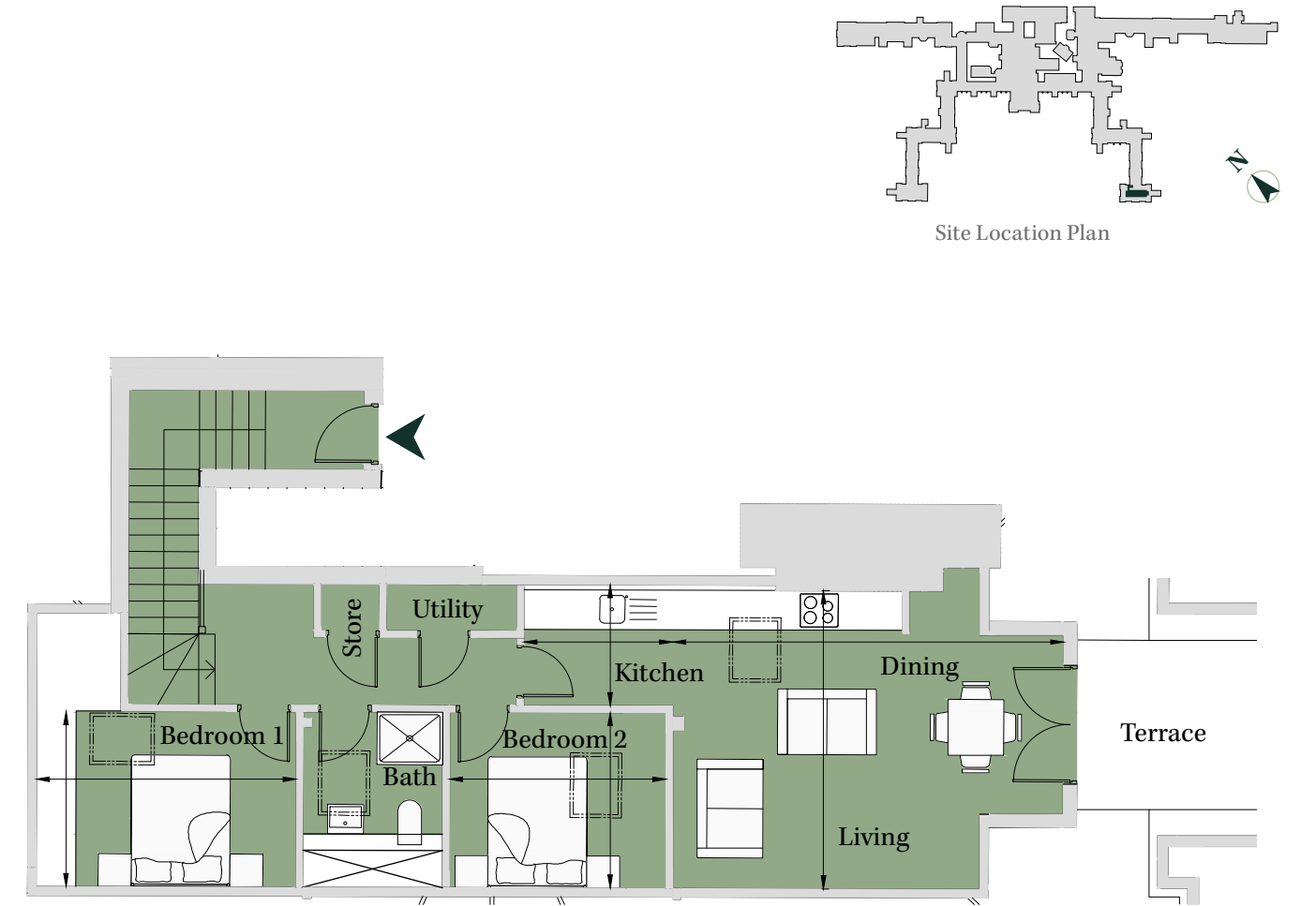
Living	12' 1" x 12' 1"	(3.67m x 3.67m)
Dining	8' 5" x 7' 5"	(2.55m x 2.24m)
Kitchen	9' 11" x 10' 9"	(3.02m x 3.27m)
Bedroom 1	13' 8" x 11' 1"	(4.17m x 3.38m)
Bedroom 2	9' x 13' 5"	(2.75m x 4.09m)



PLOT JA15
2 Bedroom Apartment

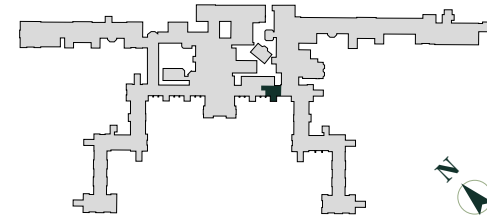
Third Floor
Total area 810 sq ft (75.2 sq m)

Living/Dining	14' 10" x 19' 6"	(4.52m x 5.93m)
Kitchen	6' 1" x 7' 5"	(1.84m x 2.26m)
Bedroom 1	8' 9" x 13'	(2.66m x 3.94m)
Bedroom 2	8' 9" x 10' 10"	(2.66m x 3.28m)

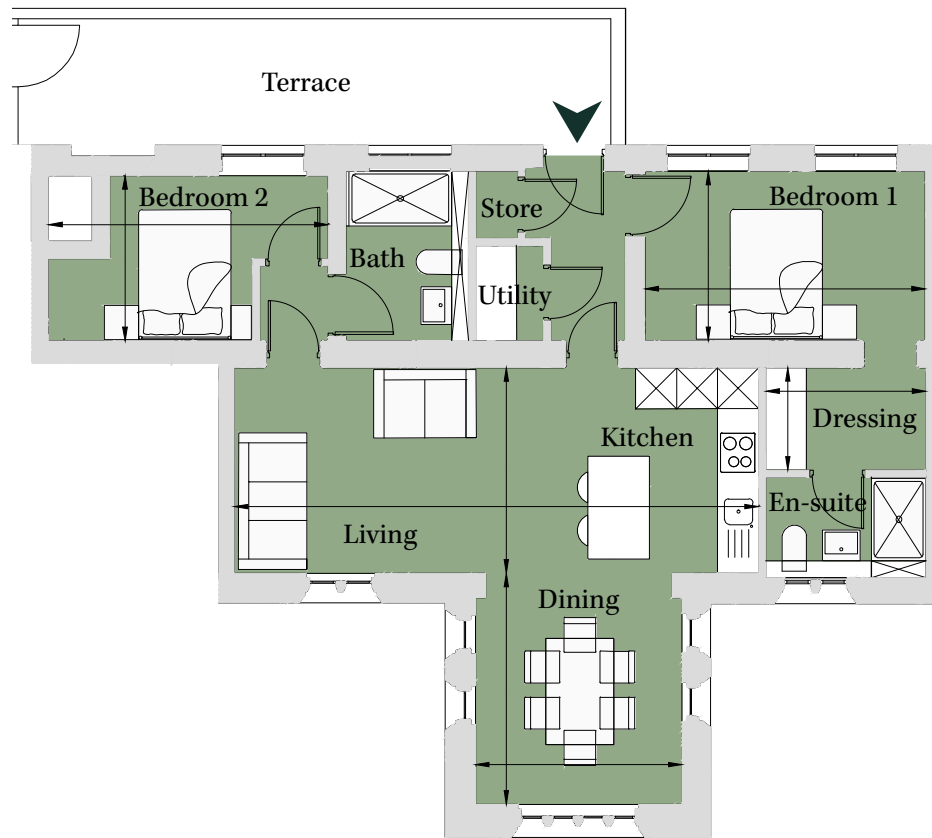


PLOT CE06
2 Bedroom Apartment

First Floor		
Total area 811 sq ft (75.3 sq m)		
Kitchen/Living	9' 10" x 25' 2"	(3.00m x 7.67m)
Dining	11' 1" x 9' 11"	(3.38m x 3.02m)
Bedroom 1	8' 2" x 13' 6"	(2.47m x 4.10m)
Dressing	7' 9" x 4' 11"	(2.35m x 1.50m)
Bedroom 2	7' 11" x 13' 5"	(2.41m x 4.09m)

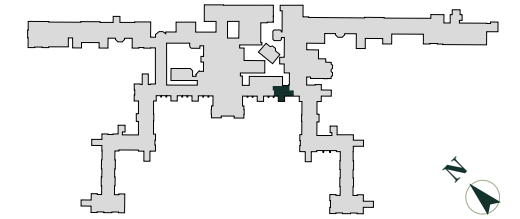


Site Location Plan

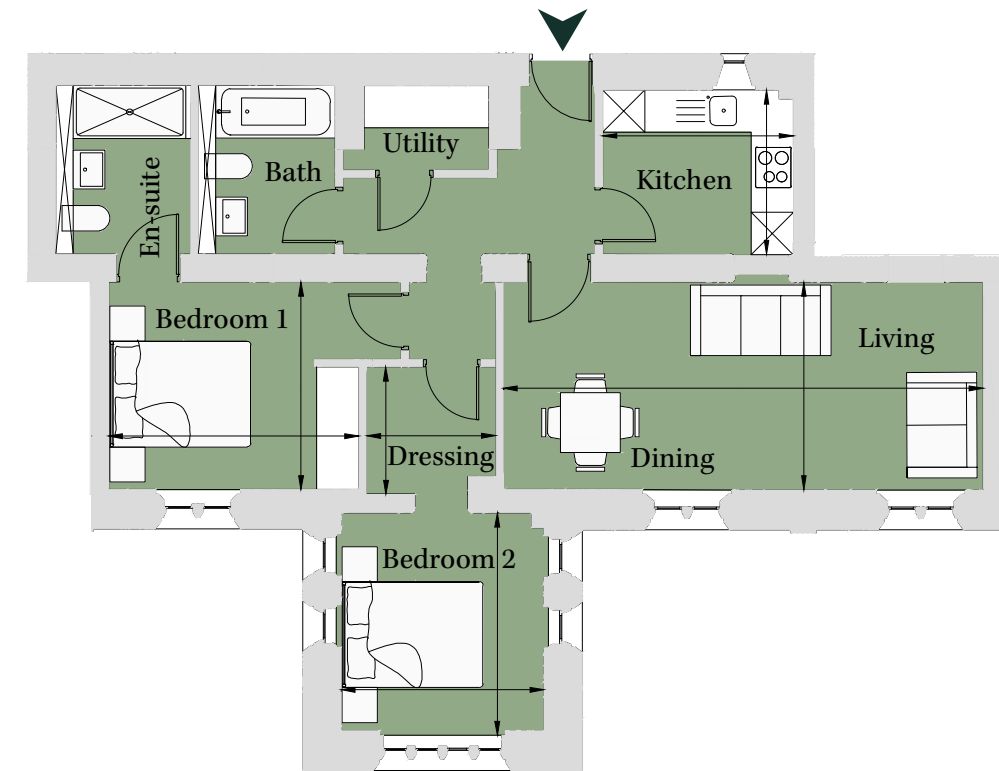


PLOT CE04
2 Bedroom Apartment

Ground Floor		
Total area 811 sq ft (75.4 sq m)		
Kitchen	7' 8" x 8' 11"	(2.33m x 2.71m)
Living/Dining	9' 8" x 22' 5"	(2.95m x 6.82m)
Bedroom 1	9' 8" x 11' 8"	(2.95m x 3.56m)
Bedroom 2	10' 5" x 9' 6"	(3.16m x 2.88m)
Dressing	6' 1" x 5' 11"	(1.85m x 1.81m)



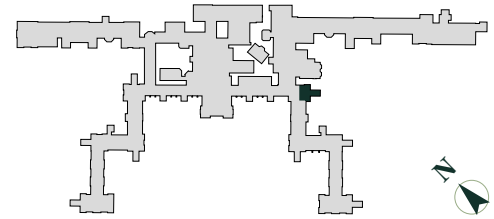
Site Location Plan



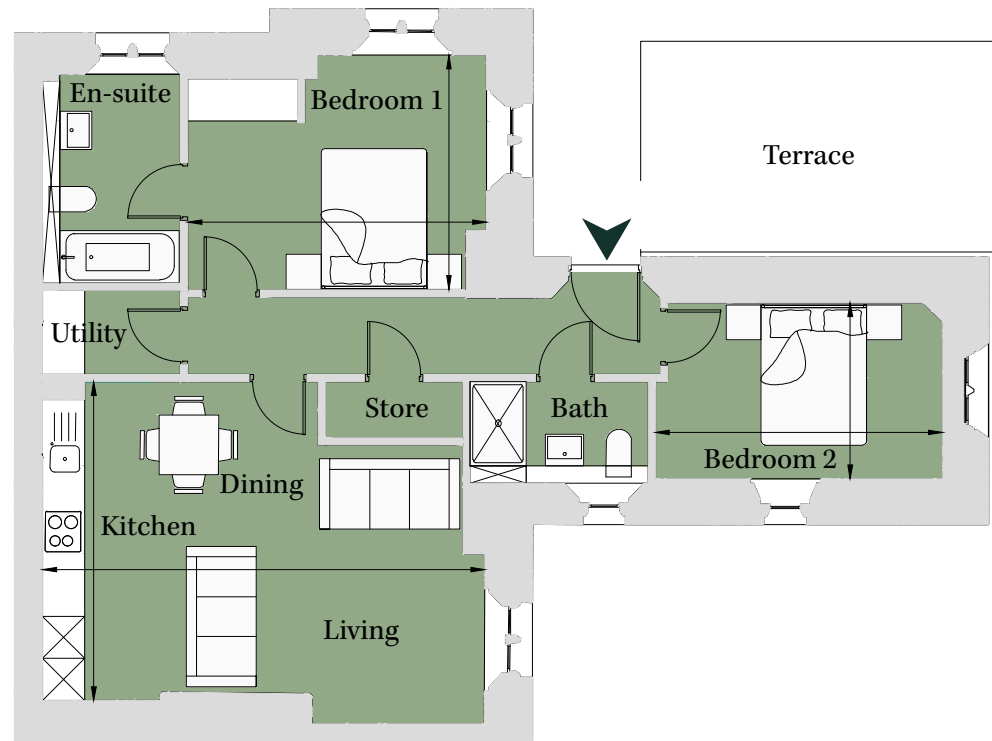
PLOT PR03
2 Bedroom Apartment

Ground Floor
Total area 814 sq ft (75.6 sq m)

Living/Dining /Kitchen	14' 11" x 20' 8"	(4.54m x 6.29m)
Bedroom 1	11' x 14'	(3.34m x 4.25m)
Bedroom 2	8' 3" x 13' 5"	(2.50m x 4.09m)



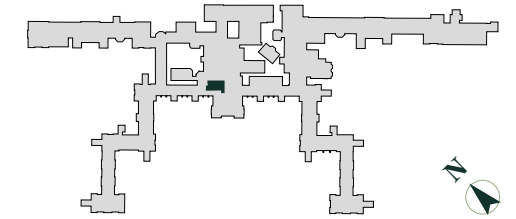
Site Location Plan



PLOT CC05
2 Bedroom Apartment

Ground/Lower Ground Floor
Total area 819 sq ft (76.1 sq m)

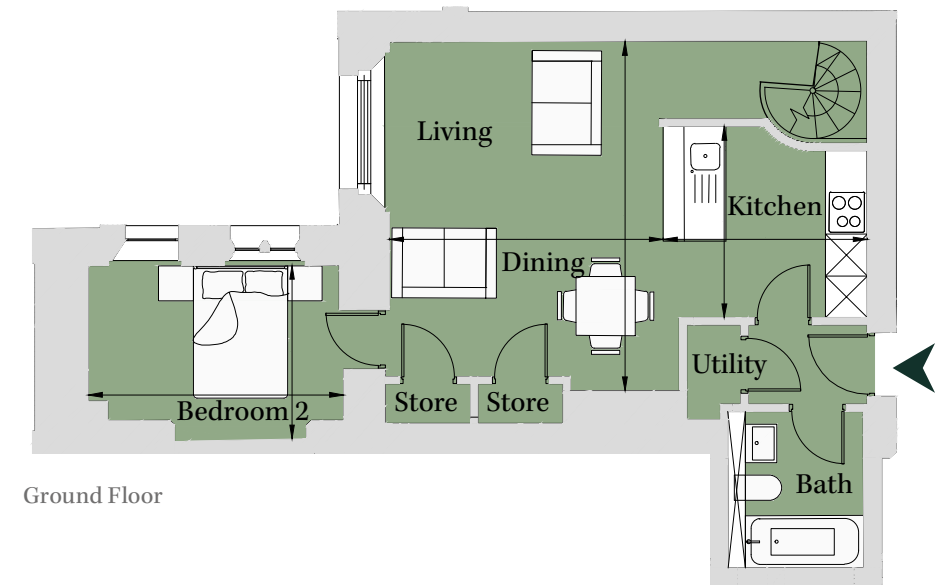
Living/Dining	16' 6" x 12' 11"	(5.01m x 3.93m)
Kitchen	9' x 9' 7"	(2.75m x 2.92m)
Bedroom 1	13' 2" x 9' 5"	(4.00m x 2.87m)
Dressing	6' 7" x 6' 3"	(2.00m x 1.92m)
Bedroom 2	8' 2" x 12' 1"	(2.49m x 3.67m)



Site Location Plan



Lower Ground Floor

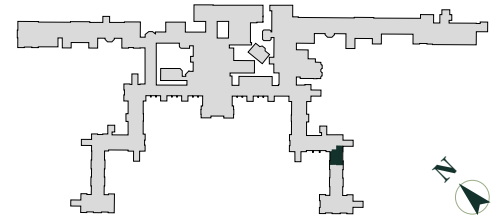


Ground Floor

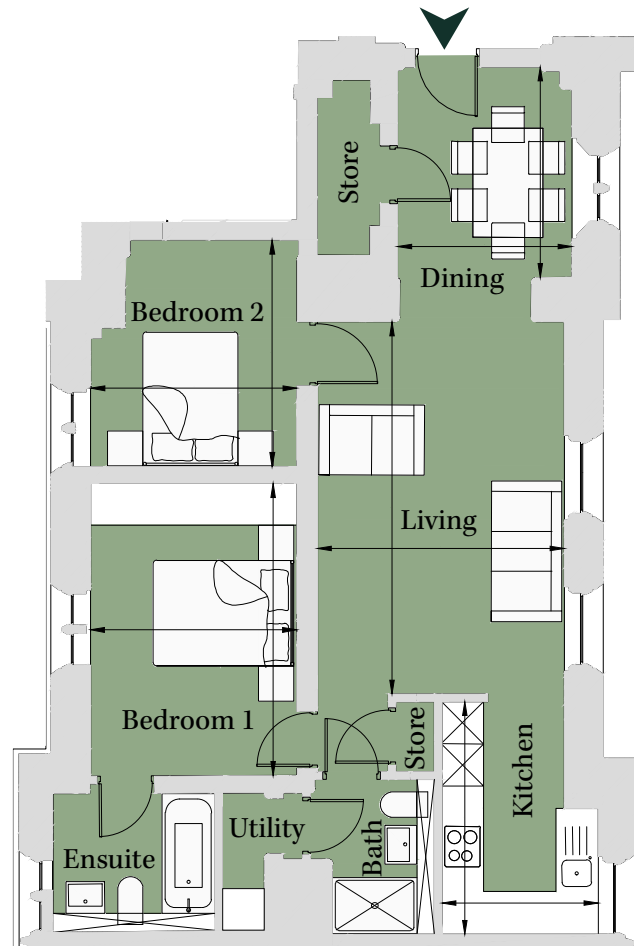
PLOT LU07
2 Bedroom Apartment

Ground Floor
Total area 822 sq ft (76.4 sq m)

Living	17' 5" x 11' 6"	(5.29m x 3.51m)
Dining	9' 10" x 8' 2"	(2.99m x 2.48m)
Kitchen	10' 10" x 7' 4"	(3.31m x 2.22m)
Bedroom 1	13' 8" x 9' 7"	(4.15m x 2.93m)
Bedroom 2	10' 7" x 9' 8"	(3.22m x 2.93m)



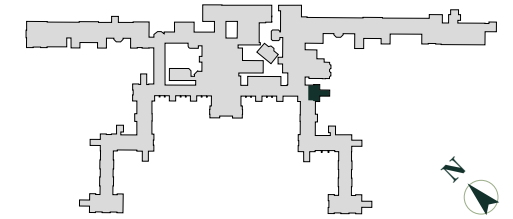
Site Location Plan



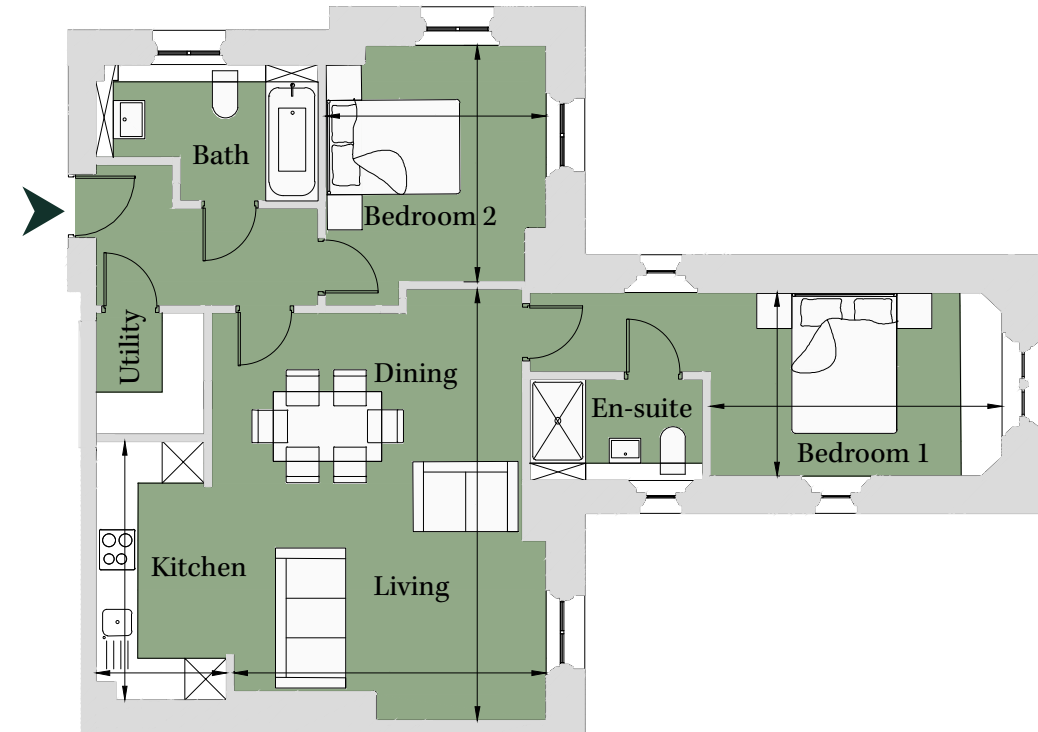
PLOT PR06
2 Bedroom Apartment

First Floor
Total area 825 sq ft (76.7 sq m)

Kitchen	6' 2" x 12' 2"	(1.87m x 3.70m)
Living/Dining	14' 8" x 20' 3"	(4.46m x 6.17m)
Bedroom 1	8' 7" x 13' 8"	(2.62m x 4.17m)
Bedroom 2	11' 1" x 10' 4"	(3.37m x 3.15m)



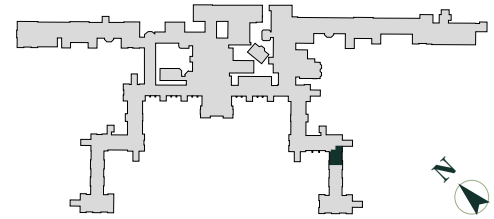
Site Location Plan



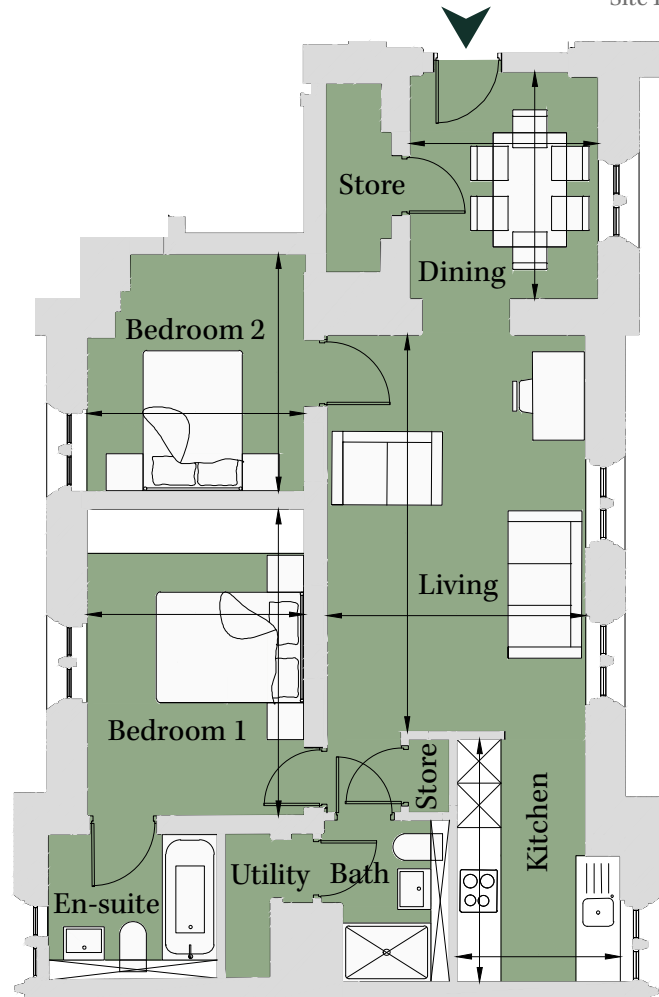
PLOT LU10
2 Bedroom Apartment

First Floor
Total area 828 sq ft (77 sq m)

Living	17' 8" x 11' 6"	(5.38m x 3.50m)
Dining	10' 1" x 8' 5"	(3.08m x 2.56m)
Kitchen	10' 10" x 7' 3"	(3.29m x 2.21m)
Bedroom 1	13' 8" x 9' 8"	(4.15m x 2.95m)
Bedroom 2	10' 7" x 9' 8"	(3.22m x 2.95m)



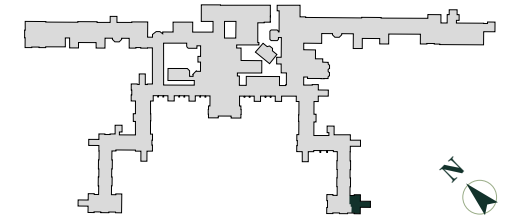
Site Location Plan



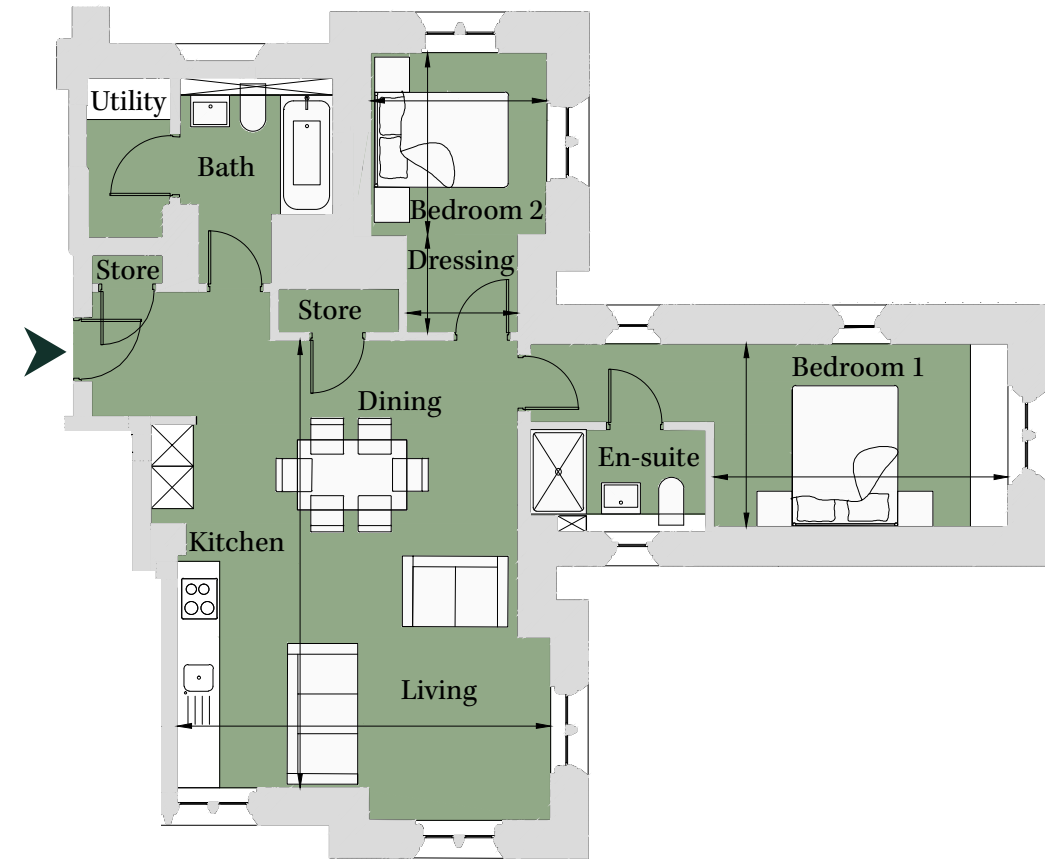
PLOT JA05
2 Bedroom Apartment

Ground Floor
Total area 839 sq ft (77.9 sq m)

Living/Dining /Kitchen	20' 11" x 17' 5"	(6.36m x 5.30m)
Bedroom 1	8' 7" x 13' 9"	(2.60m x 4.18m)
Bedroom 2	8' 3" x 8' 7"	(2.50m x 2.61m)
Dressing	5' 2" x 4' 6"	(1.58m x 1.37m)



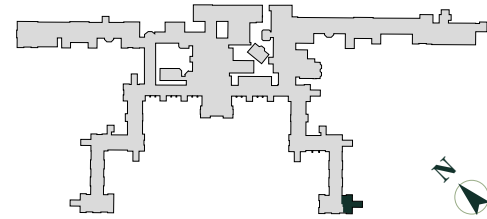
Site Location Plan



PLOT JA09
2 Bedroom Apartment

First Floor
Total area 841 sq ft (78.1 sq m)

Living/Dining /Kitchen	22' 5" x 17' 5"	(6.82m x 5.31m)
Bedroom 1	8' 7" x 14'	(2.60m x 4.26m)
Bedroom 2	9' 2" x 8' 8"	(2.79m x 2.63m)
Dressing	5' 3" x 4' 7"	(1.61m x 1.39m)



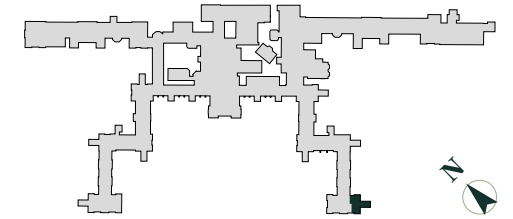
Site Location Plan



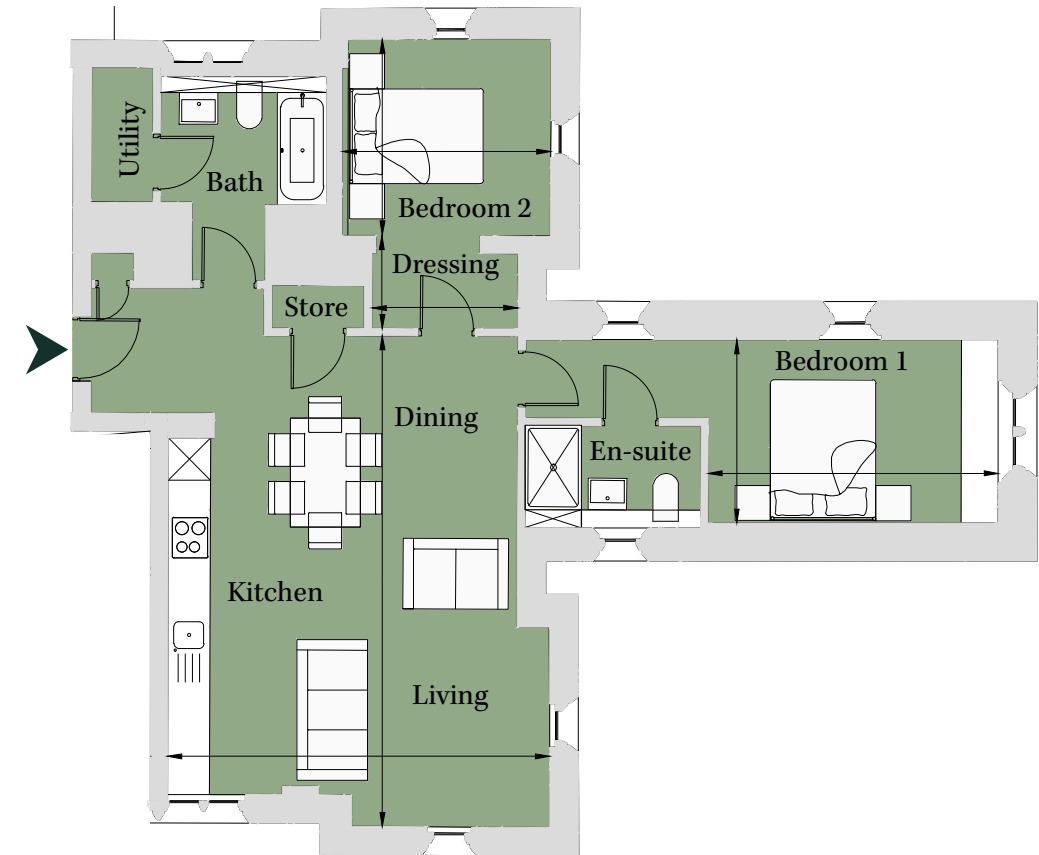
PLOT JA13
2 Bedroom Apartment

Second Floor
Total area 855 sq ft (79.4 sq m)

Living/Dining /Kitchen	22' 11" x 17' 10"	(6.97m x 5.43m)
Bedroom 1	8' 7" x 13' 6"	(2.60m x 4.12m)
Bedroom 2	9' 9" x 9' 2"	(2.96m x 2.79m)
Dressing	6' 10" x 4' 4"	(2.08m x 1.32m)



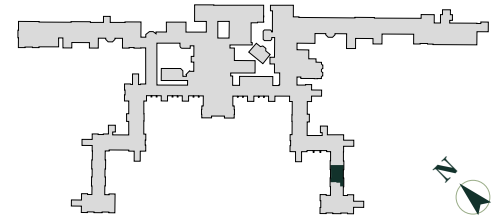
Site Location Plan



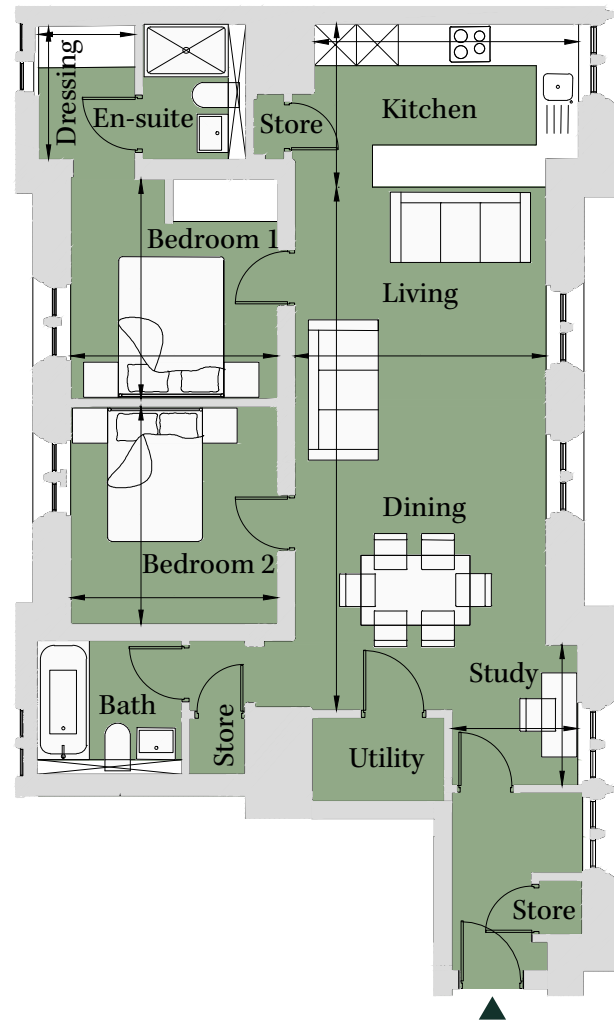
PLOT JA12
2 Bedroom Apartment

First Floor
Total area 880 sq ft (81.7 sq m)

Kitchen	12' 4" x 7' 8"	(3.77m x 2.33m)
Living/Dining	11' 9" x 24' 6"	(3.59m x 7.47m)
Study	5' 11" x 6' 7"	(1.80m x 2.00m)
Bedroom 1	10' 3" x 9' 8"	(3.13m x 2.95m)
Bedroom 2	10' 2" x 9' 8"	(3.10m x 2.95m)



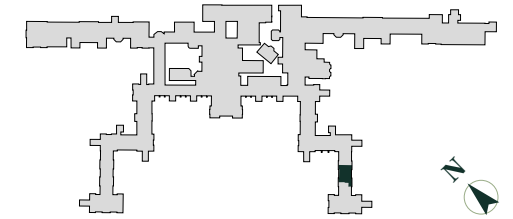
Site Location Plan



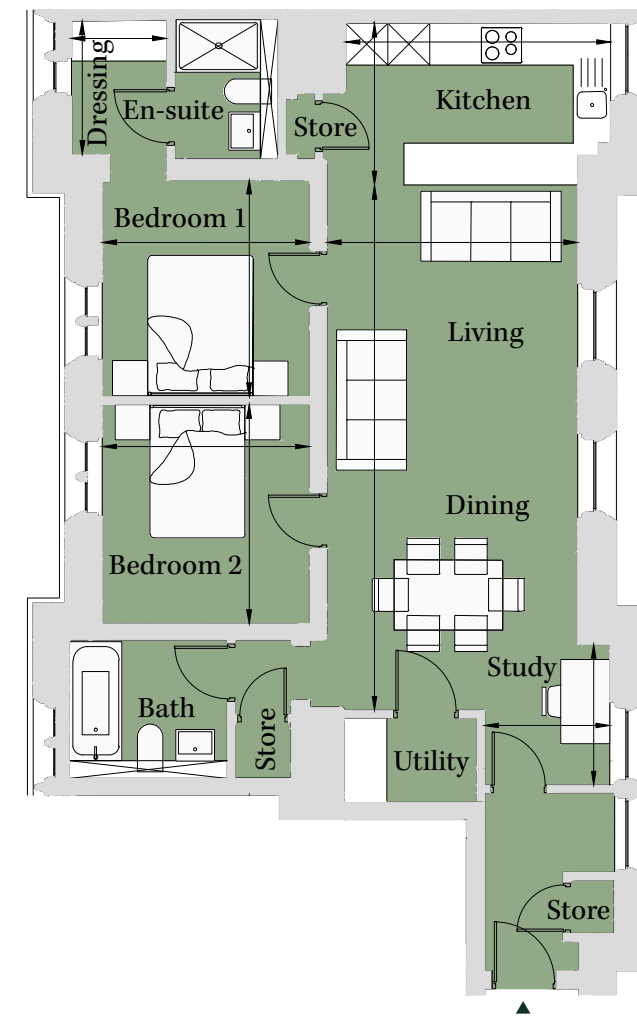
PLOT JA08
2 Bedroom Apartment

Ground Floor
Total area 882 sq ft (82 sq m)

Kitchen	12' 5" x 7' 7"	(3.78m x 2.31m)
Living/Dining	11' 9" x 24' 7"	(3.57m x 7.48m)
Study	5' 10" x 6' 7"	(1.79m x 2.01m)
Bedroom 1	10' 2" x 9' 8"	(3.08m x 2.95m)
Dressing	4' 6" x 6' 3"	(1.36m x 1.90m)
Bedroom 2	10' 3" x 9' 8"	(3.12m x 2.95m)



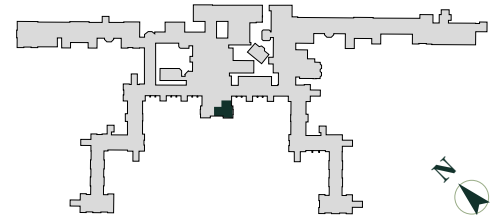
Site Location Plan



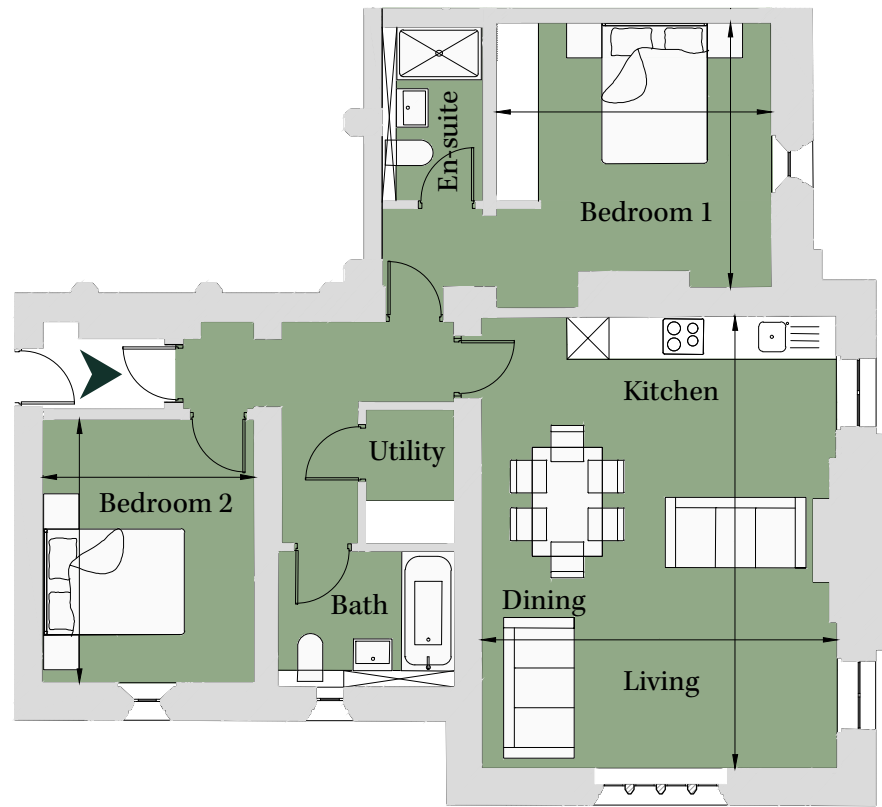
PLOT CC20
2 Bedroom Apartment

Second Floor
Total area 915 sq ft (85 sq m)

Living/Dining		
Kitchen	21' 1" x 16' 7"	(6.42m x 5.05m)
Bedroom 1	12' 4" x 12' 10"	(3.76m x 3.91m)
Bedroom 2	12' 4" x 9' 11"	(3.74m x 3.01m)



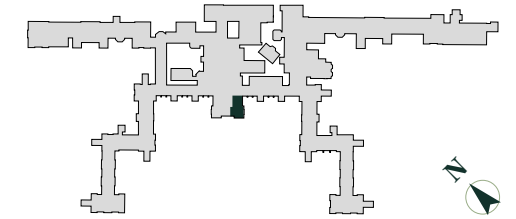
Site Location Plan



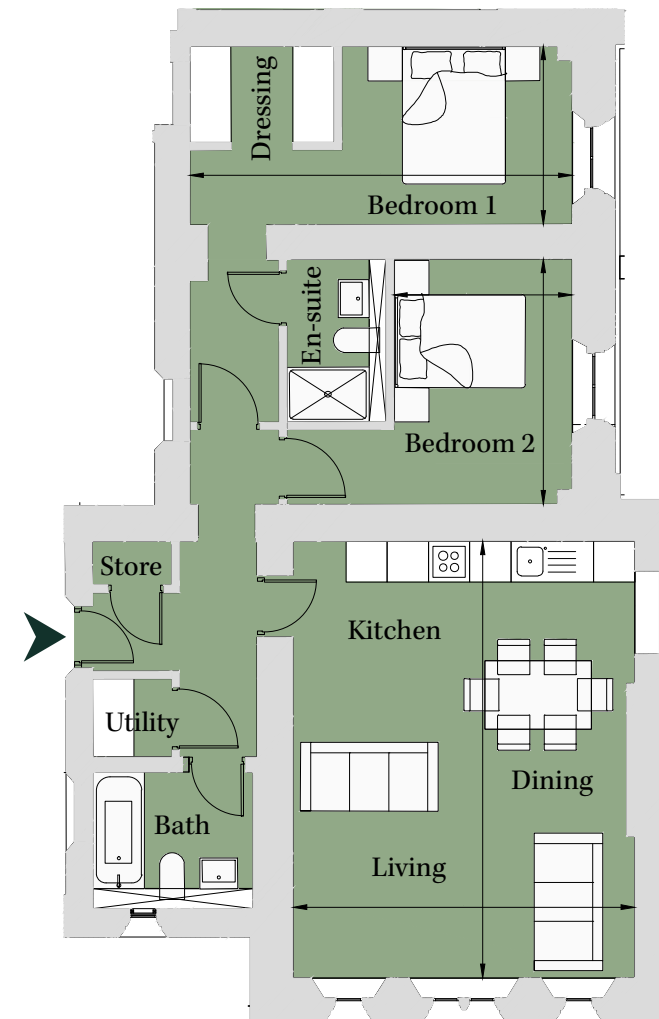
PLOT CC07
2 Bedroom Apartment

Ground Floor
Total area 938 sq ft (87.1 sq m)

Kitchen/Living		
Living/Dining	20' 10" x 16' 4"	(6.35m x 4.96m)
Bedroom 1	8' 6" x 18' 3"	(2.59m x 5.56m)
Bedroom 2	11' 9" x 8' 6"	(3.56m x 2.59m)



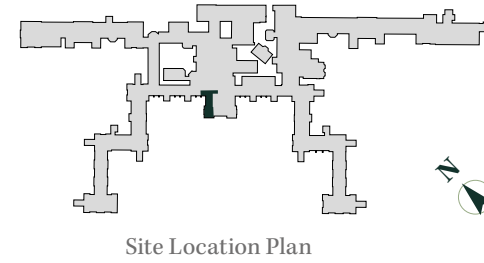
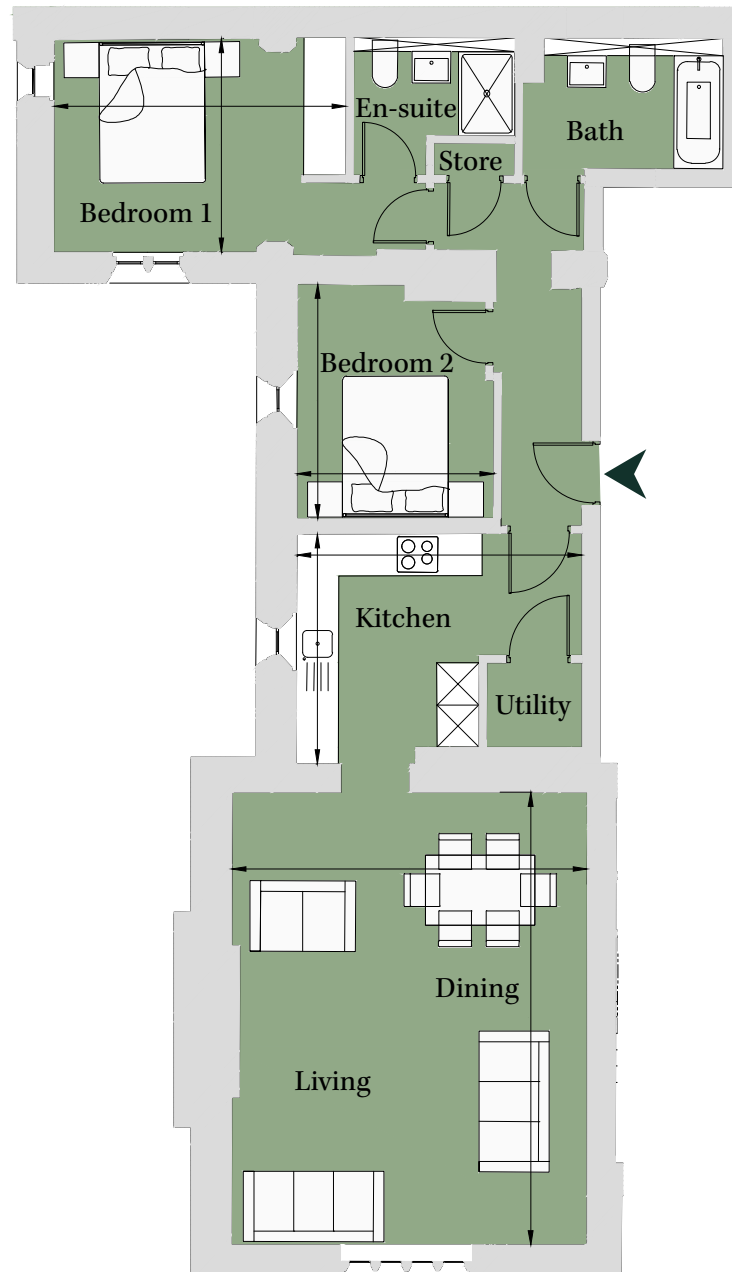
Site Location Plan



PLOT CCI4
2 Bedroom Apartment

Second Floor
Total area 971 sq ft (90.3 sq m)

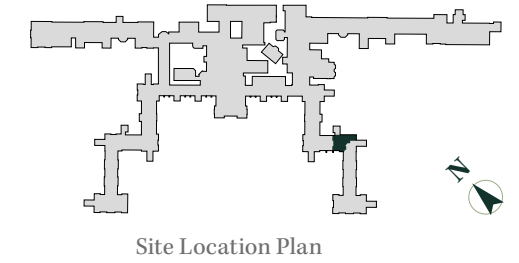
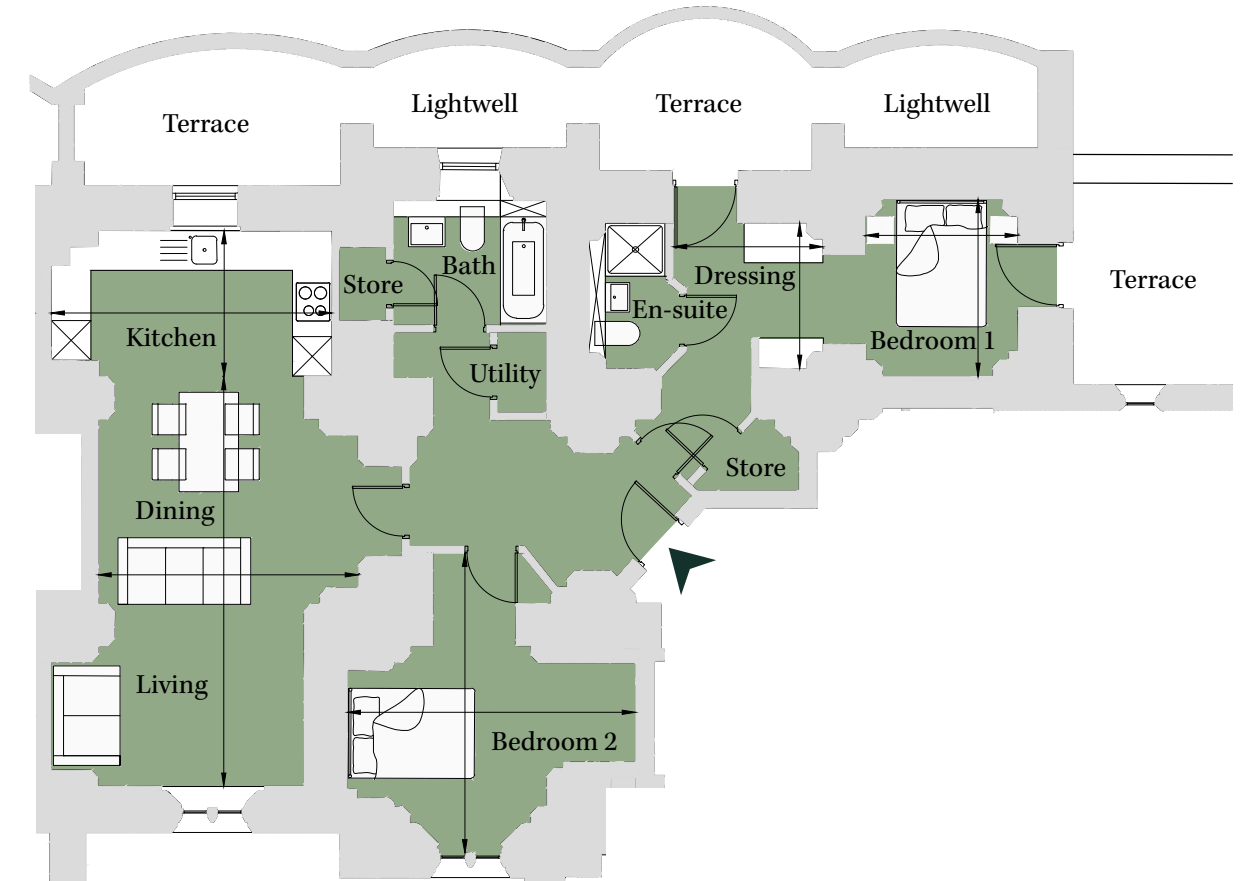
Living/Dining	21' 2" x 16' 7"	(6.43m x 5.05m)
Kitchen	10' 9" x 13' 4"	(3.27m x 4.06m)
Bedroom 1	10' x 13' 8"	(3.03m x 4.15m)
Bedroom 2	9' 2" x 10' 11"	(2.80m x 3.33m)



PLOT LU02
2 Bedroom Apartment

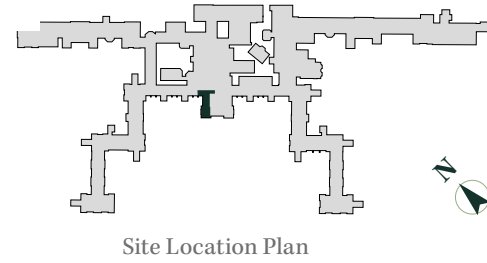
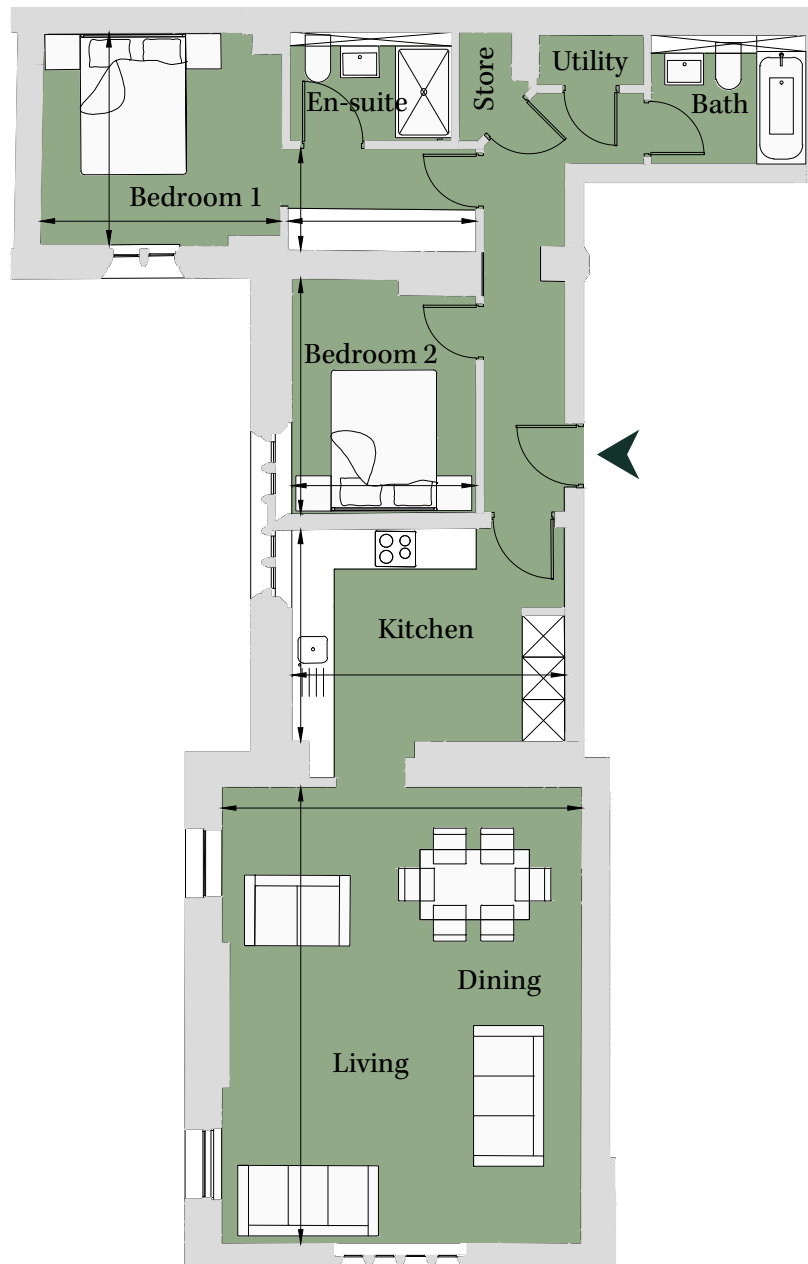
Lower Ground
Total area 979 sq ft (91 sq m)

Living/Dining	20' 3" x 12' 11"	(6.17m x 3.92m)
Kitchen	7' 3" x 13' 11"	(2.19m x 4.23m)
Bedroom 1	8' 9" x 7' 7"	(2.67m x 2.30m)
Dressing	7' 5" x 7' 2"	(2.25m x 2.19m)
Bedroom 2	14' 10" x 14' 3"	(4.51m x 4.34m)



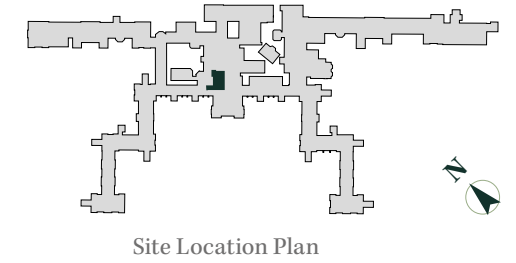
PLOT CC08
2 Bedroom Apartment

First Floor		
Total area 989 sq ft (91.9 sq m)		
Living/Dining	21' 4" x 16' 10"	(6.49m x 5.11m)
Kitchen	9' 11" x 12' 9"	(3.01m x 3.88m)
Bedroom 1	9' 11" x 11' 3"	(3.01m x 3.41m)
	4' 9" x 8' 9"	(1.45m x 2.67m)
Bedroom 2	8' 7" x 11'	(2.62m x 3.35m)



PLOT CC09
2 Bedroom Apartment

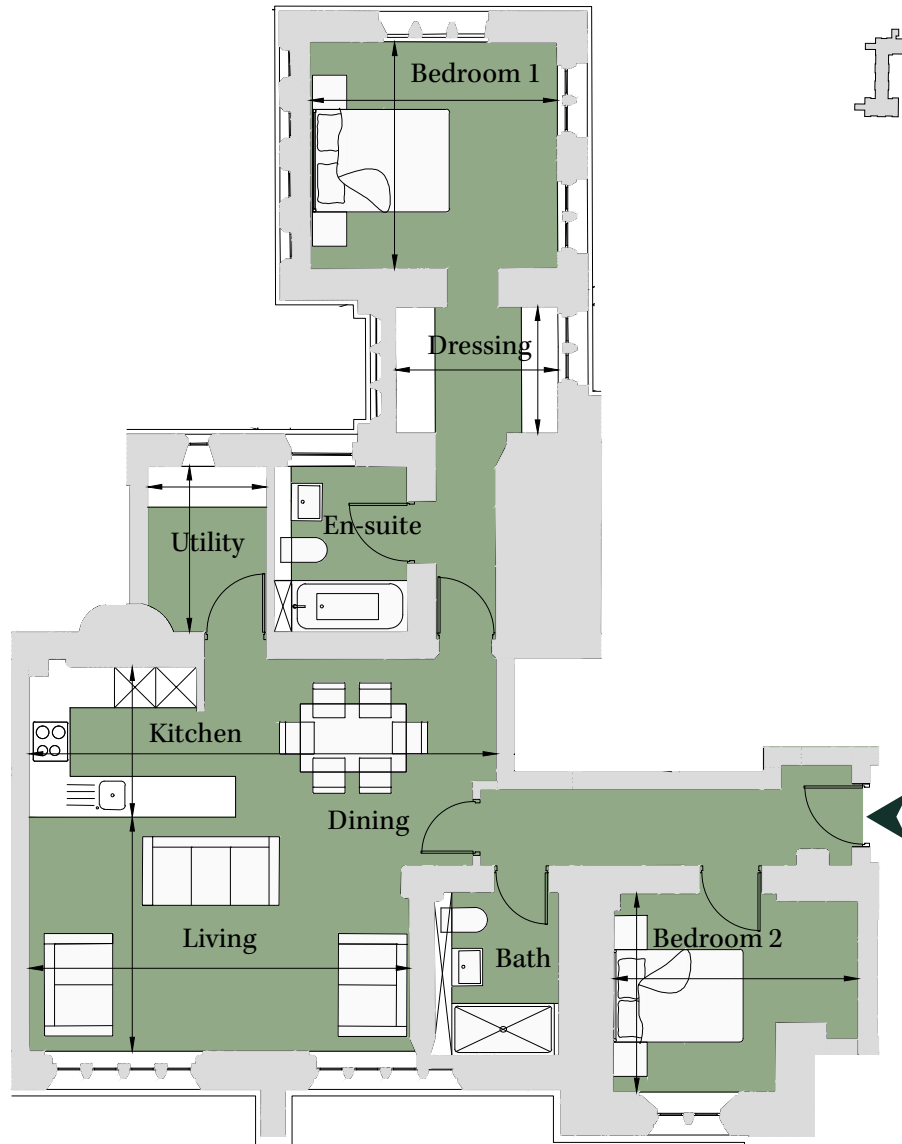
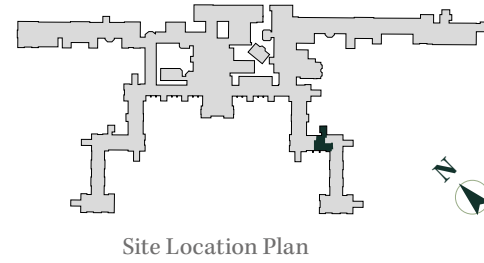
First Floor		
Total area 1,004 sq ft (93.3 sq m)		
Kitchen	7' 4" x 12' 10"	(2.23m x 3.91m)
Living/Dining	13' x 22' 3"	(3.95m x 6.78m)
Study	9' 9" x 4' 10"	(2.96m x 1.46m)
Bedroom 1	8' 10" x 12' 6"	(2.68m x 3.81m)
Dressing	7' 6" x 10' 11"	(2.29m x 3.32m)
Bedroom 2	10' 6" x 9' 9"	(3.19m x 2.97m)



PLOT LU05
2 Bedroom Apartment

Ground Floor
Total area 1,014 sq ft (94.2 sq m)

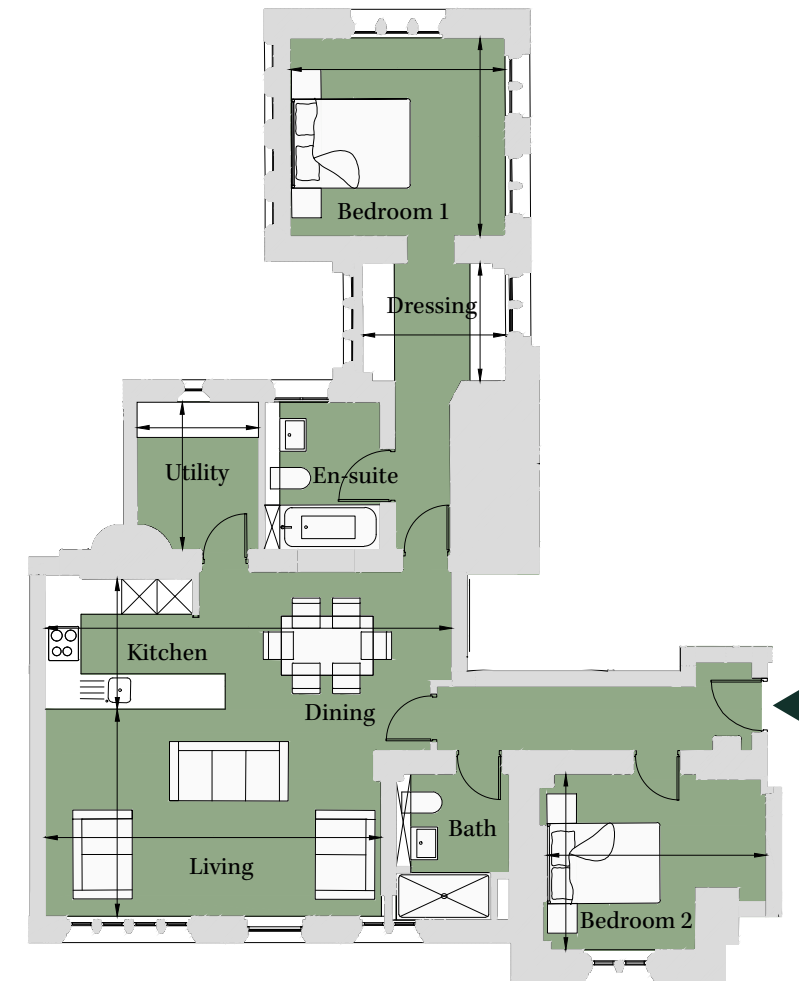
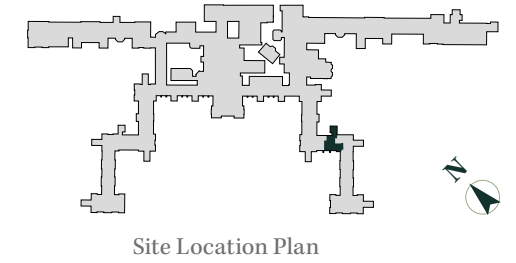
Living/Dining	11' 3" x 18' 3"	(3.41m x 5.56m)
Kitchen	7' 3" x 22' 6"	(2.20m x 6.84m)
Bedroom 1	10' 11" x 11' 11"	(3.31m x 3.62m)
Dressing	7' 10" x 6' 1"	(2.38m x 1.85m)
Bedroom 2	9' 6" x 11' 9"	(2.90m x 3.58m)
Utility	5' 9" x 8'	(1.75m x 2.43m)



PLOT LU08
2 Bedroom Apartment

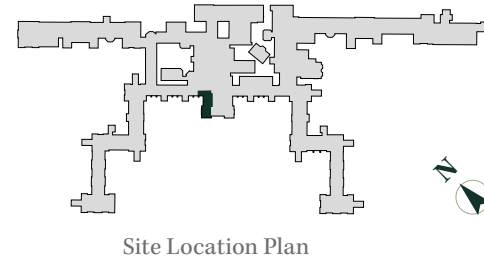
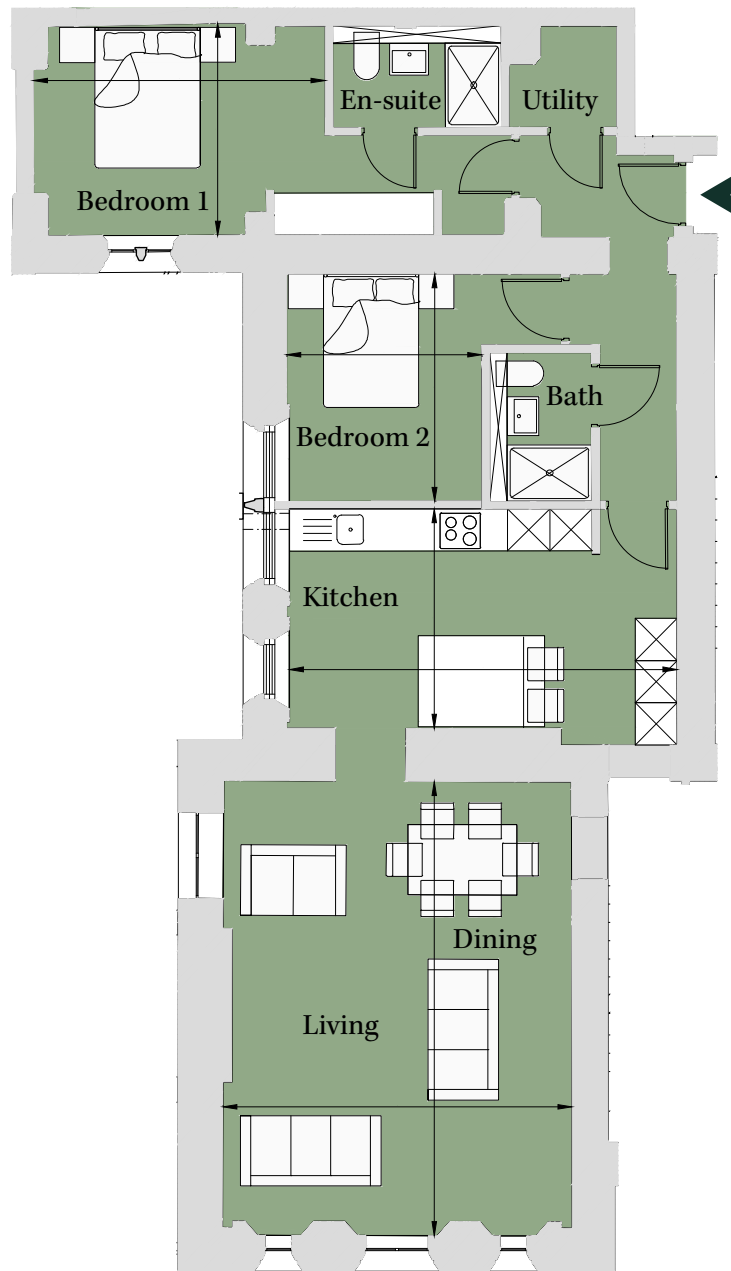
First Floor
Total area 1,025 sq ft (95.3 sq m)

Living	11' 5" x 18' 7"	(3.48m x 5.66m)
Dining/Kitchen	7' 3" x 22' 6"	(2.20m x 6.85m)
Bedroom 1	11' x 11' 11"	(3.33m x 3.63m)
Dressing	7' 11" x 6' 6"	(2.41m x 1.99m)
Bedroom 2	9' 9" x 12' 2"	(2.95m x 3.70m)
Utility	6' 9" x 8' 2"	(2.06m x 2.48m)



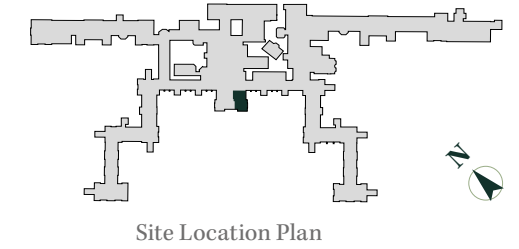
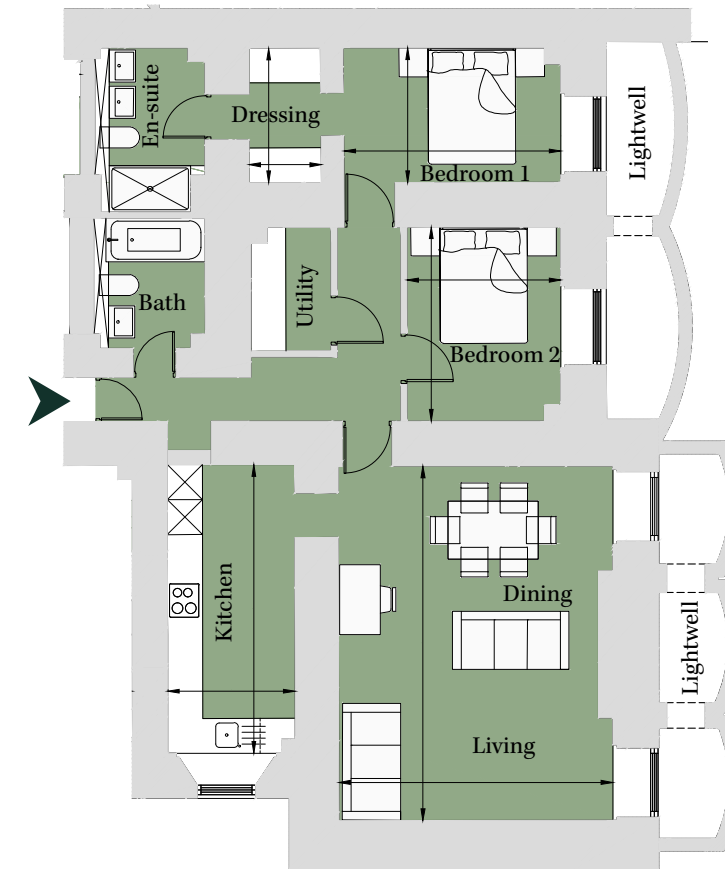
PLOT CC04
2 Bedroom Apartment

Ground Floor		
Total area 1,062 sq ft (98.7 sq m)		
Living/Dining	21' 2" x 16' 3"	(6.45m x 4.96m)
Kitchen	10' 3" x 18' 1"	(3.12m x 5.51m)
Bedroom 1	9' 11" x 13' 7"	(3.01m x 4.14m)
Bedroom 2	10' 7" x 9' 1"	(3.23m x 2.77m)



PLOT CC01
2 Bedroom Apartment

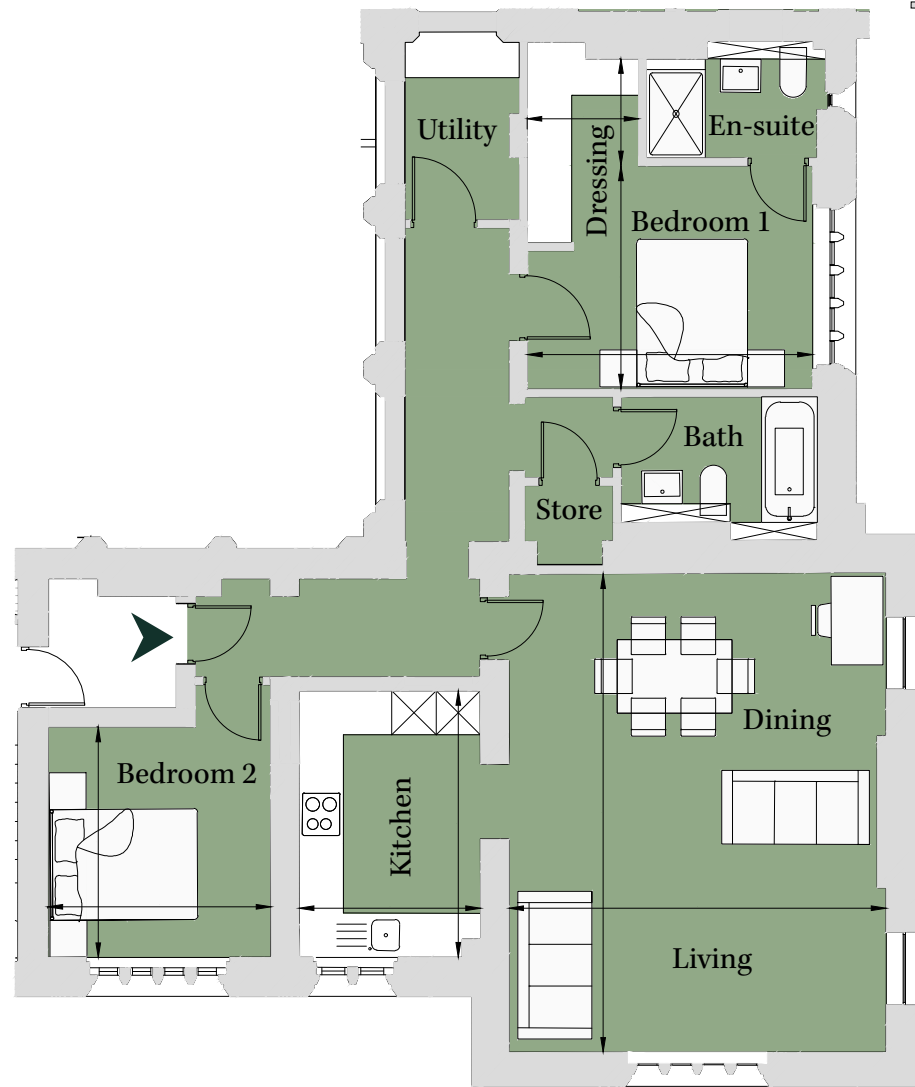
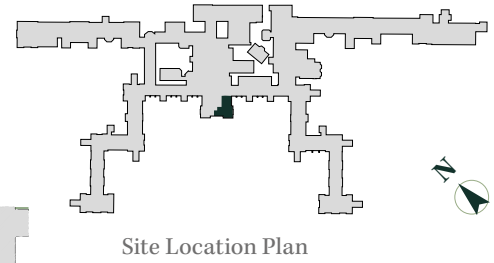
Lower Ground		
Total area 1,071 sq ft (99 sq m)		
Living/Dining	20' x 15' 5"	(6.08m x 4.70m)
Kitchen	16' 3" x 7' 2"	(4.95m x 2.18m)
Bedroom 1	7' 7" x 12' 3"	(2.31m x 3.72m)
Dressing	4' x 10' 11"	(1.23m x 3.33m)
Bedroom 2	10' 11" x 8' 8"	(3.33m x 2.64m)



PLOT CCI3
2 Bedroom Apartment

First Floor
Total area 1,093 sq ft (101.6 sq m)

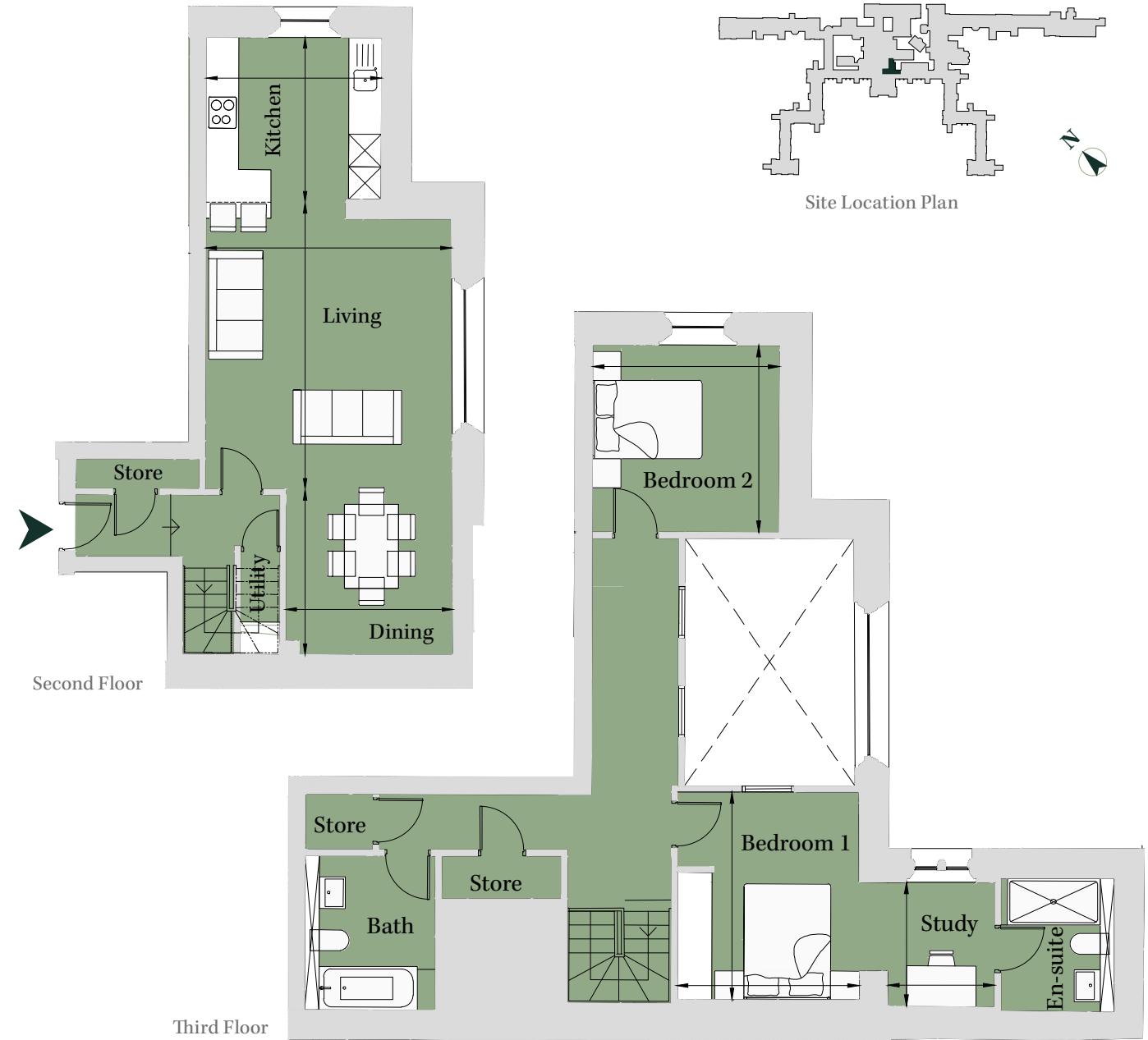
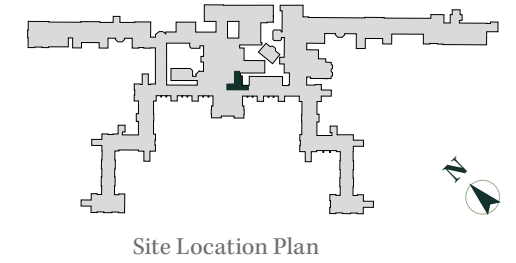
Living/Dining	21' 3" x 16' 9"	(6.47m x 5.11m)
Kitchen	11' 10" x 8' 1"	(3.61m x 2.46m)
Bedroom 1	9' 11" x 12' 8"	(3.02m x 3.86m)
	4' 9" x 5'	(1.44m x 1.51m)
Bedroom 2	10' 3" x 9' 11"	(3.12m x 3.02m)



PLOT CCI8
2 Bedroom Apartment

Second/Third Floor
Total area 1,181 sq ft (109.7 sq m)

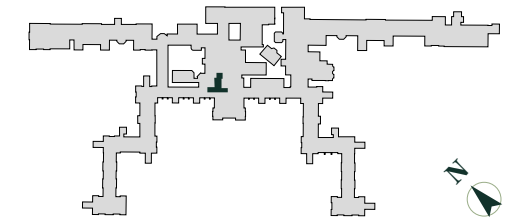
Living	17' 4" x 14' 10"	(5.28m x 4.52m)
Dining	10' x 10' 1"	(3.05m x 3.08m)
Kitchen	10' x 10' 7"	(3.03m x 3.22m)
Bedroom 1	11' 9" x 10' 5"	(3.59m x 3.16m)
Bedroom 2	10' 8" x 10' 7"	(3.23m x 3.23m)
Study	6' 1" x 7'	(1.85m x 2.14m)



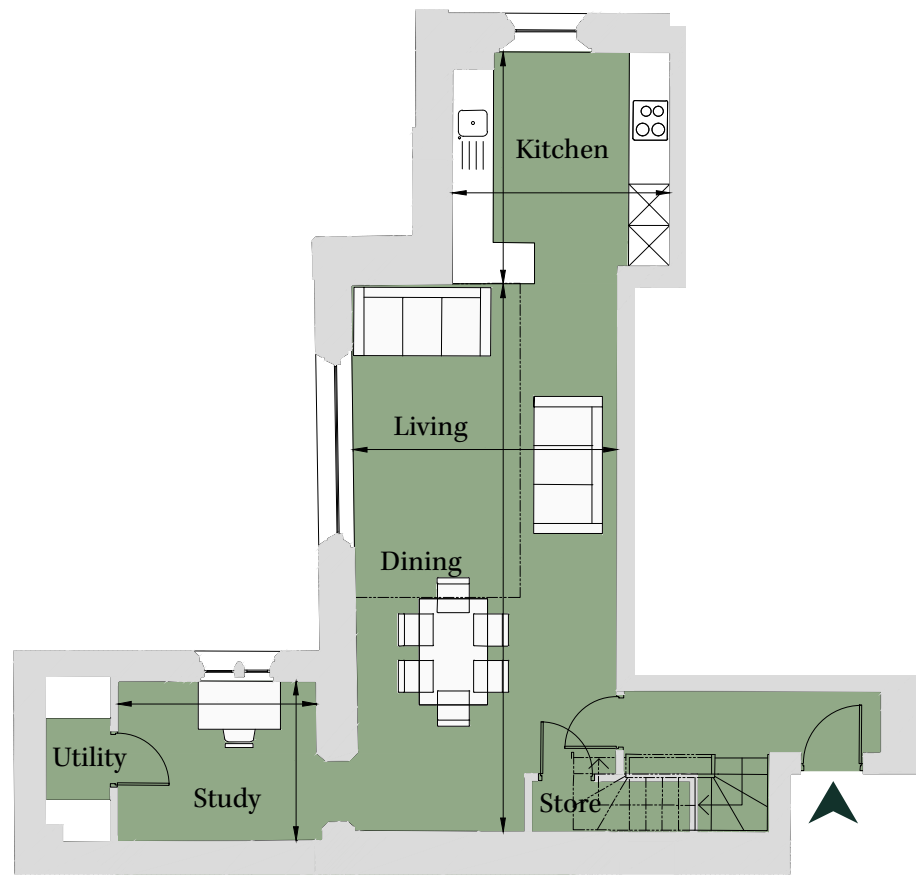
PLOT CCI5
2 Bedroom Apartment

Second/Third Floor
Total area 1,143 sq ft (106.2 sq m)

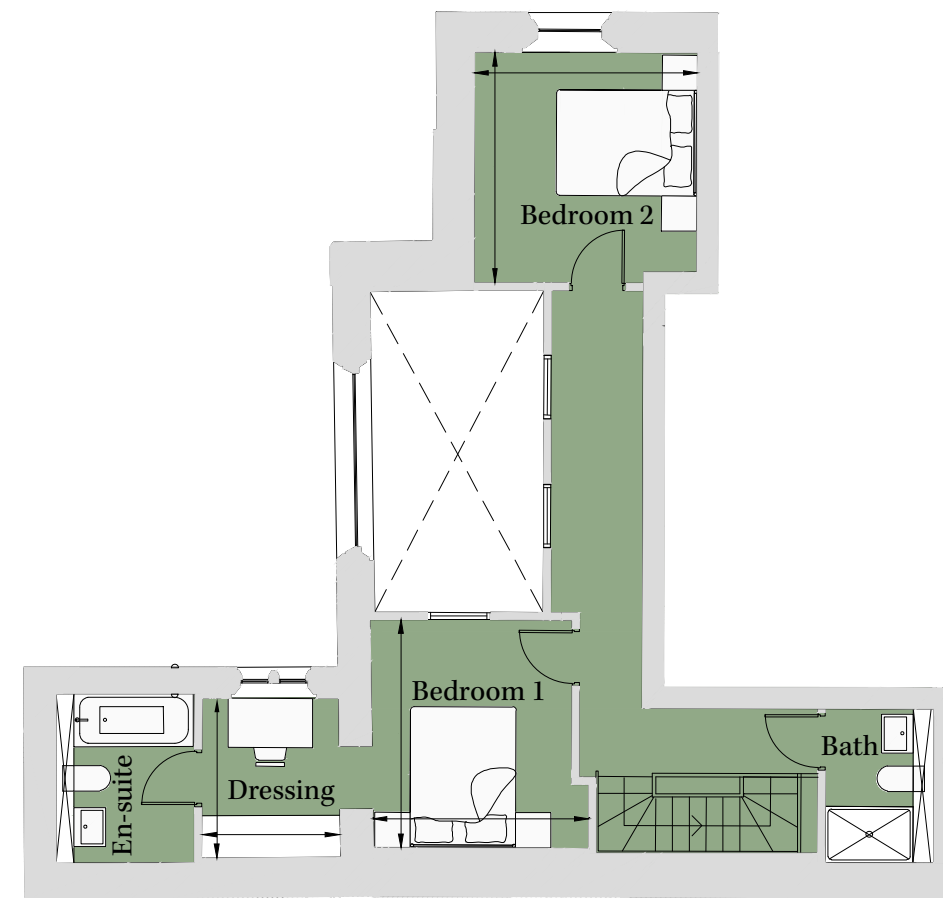
Living/Dining	26' 3" x 12' 8"	(7.99m x 3.85m)
Kitchen	11' 1" x 10' 5"	(3.38m x 3.17m)
Bedroom 1	10' 8" x 10' 1"	(3.24m x 3.06m)
Bedroom 2	10' 9" x 10' 5"	(3.27m x 3.17m)
Study	9' 6" x 7' 7"	(2.90m x 2.32m)
Dressing	6' 4" x 7' 5"	(1.94m x 2.27m)



Site Location Plan



Second Floor



Third Floor

PLOT PR08
2 Bedroom Apartment

Second/Third Floor
Total area 1,241 sq ft (115.3 sq m)

Kitchen	9' 11" x 8' 7"	(3.01m x 2.61m)
Dining	11' 10" x 8' 7"	(3.60m x 2.61m)
Living	15' 9" x 18' 3"	(4.79m x 5.57m)
Bedroom 1	10' 2" x 13' 9"	(3.09m x 4.18m)
Dressing	9' 11" x 6' 9"	(3.03m x 2.05m)
Bedroom 2	10' 1" x 9' 3"	(3.06m x 2.82m)

PLOT RO07
3 Bedroom Apartment

Second Floor
Total area 1,041 sq ft (96.7 sq m)

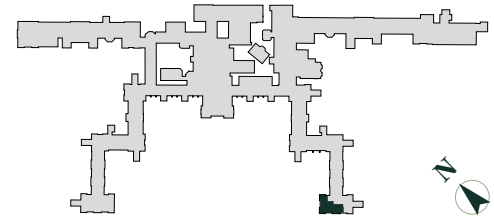
Living	13' 7" x 12' 6"	(4.13m x 3.81m)
Dining	13' 7" x 9' 11"	(4.13m x 3.02m)
Kitchen	9' 1" x 16' 8"	(2.77m x 5.07m)
Bedroom 1	13' 2" x 8' 7"	(4.01m x 2.61m)
Bedroom 2	10' 6" x 11' 1"	(3.20m x 3.37m)
Bedroom 3	9' 4" x 9' 8"	(2.85m x 2.93m)



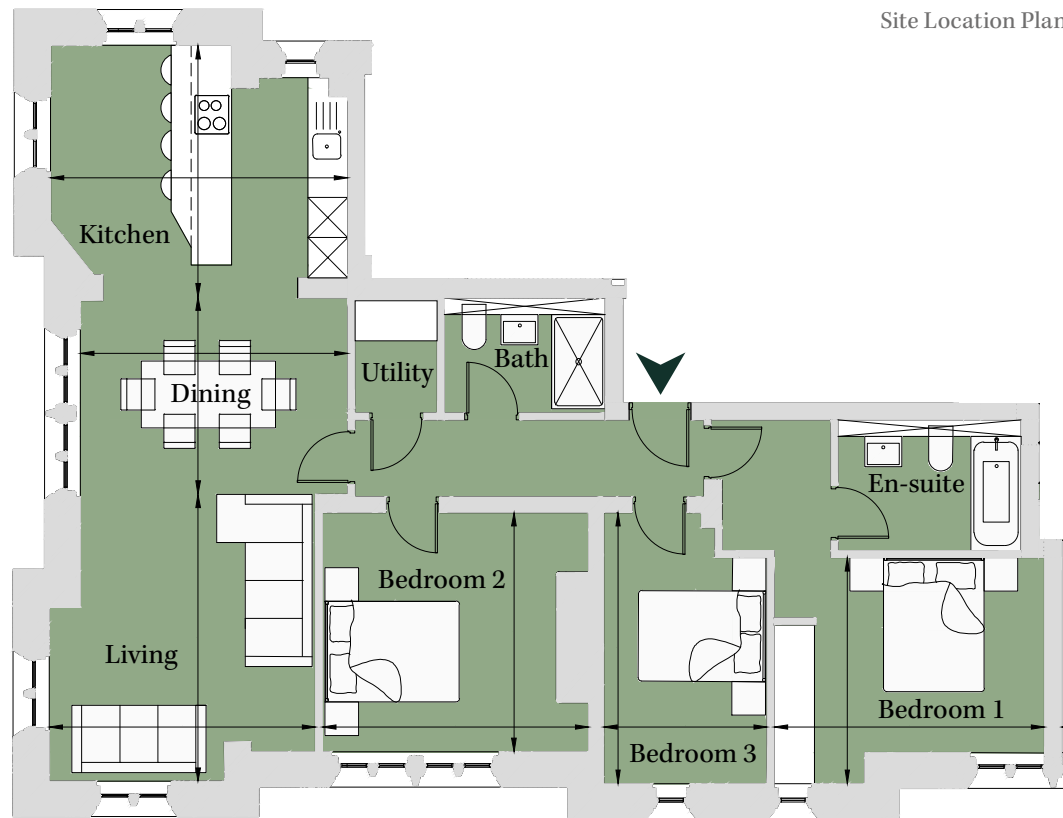
PLOT JA10
3 Bedroom Apartment

First Floor
Total area 1,119 sq ft (103.9 sq m)

Living	14' x 13'	(4.27m x 3.97m)
Dining	9' 8" x 13' 1"	(2.93m x 3.98m)
Kitchen	12' 4" x 14' 7"	(3.75m x 4.42m)
Bedroom 1	11' 1" x 13' 3"	(3.36m x 4.03m)
Bedroom 2	11' 8" x 13'	(3.56m x 3.96m)
Bedroom 3	13' 3" x 8'	(4.03m x 2.43m)



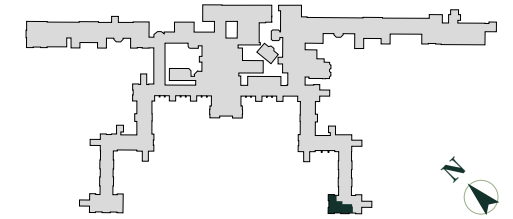
Site Location Plan



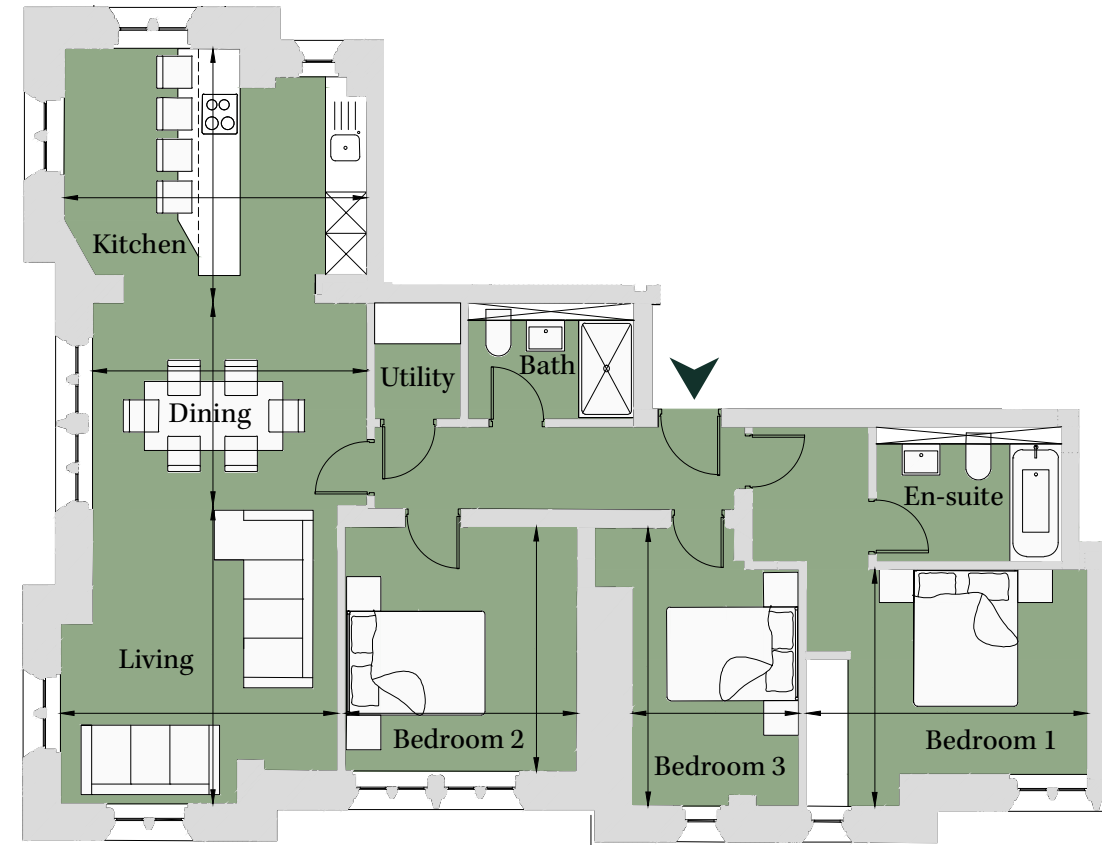
PLOT JA06
3 Bedroom Apartment

Ground Floor
Total area 1,119 sq ft (104 sq m)

Living	14' 2" x 13' 2"	(4.30m x 4.00m)
Dining	9' 8" x 13'	(2.93m x 3.96m)
Kitchen	12' x 14' 4"	(3.66m x 4.37m)
Bedroom 1	11' 3" x 13' 4"	(3.42m x 4.06m)
Bedroom 2	11' 7" x 11'	(3.52m x 3.35m)
Bedroom 3	13' 2" x 7' 11"	(4.01m x 2.41m)



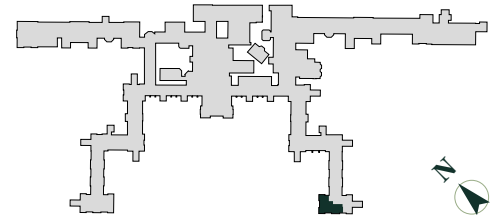
Site Location Plan



PLOT JA03
3 Bedroom Apartment

Lower Ground
Total area 1,153 sq ft (107.1 sq m)

Living	14' x 13'	(4.25m x 3.96m)
Dining	9' 8" x 13' 4"	(2.94m x 4.05m)
Kitchen	12' x 14' 2"	(3.66m x 4.32m)
Bedroom 1	10' 11" x 13' 3"	(3.32m x 4.04m)
Bedroom 2	11' 1" x 12' 4"	(3.37m x 3.74m)
Bedroom 3	12' 5" x 8' 1"	(3.79m x 2.45m)



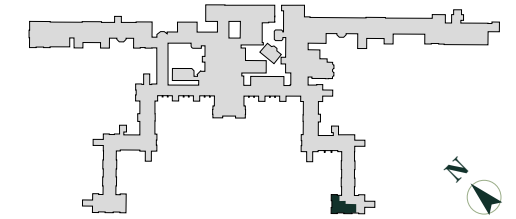
Site Location Plan



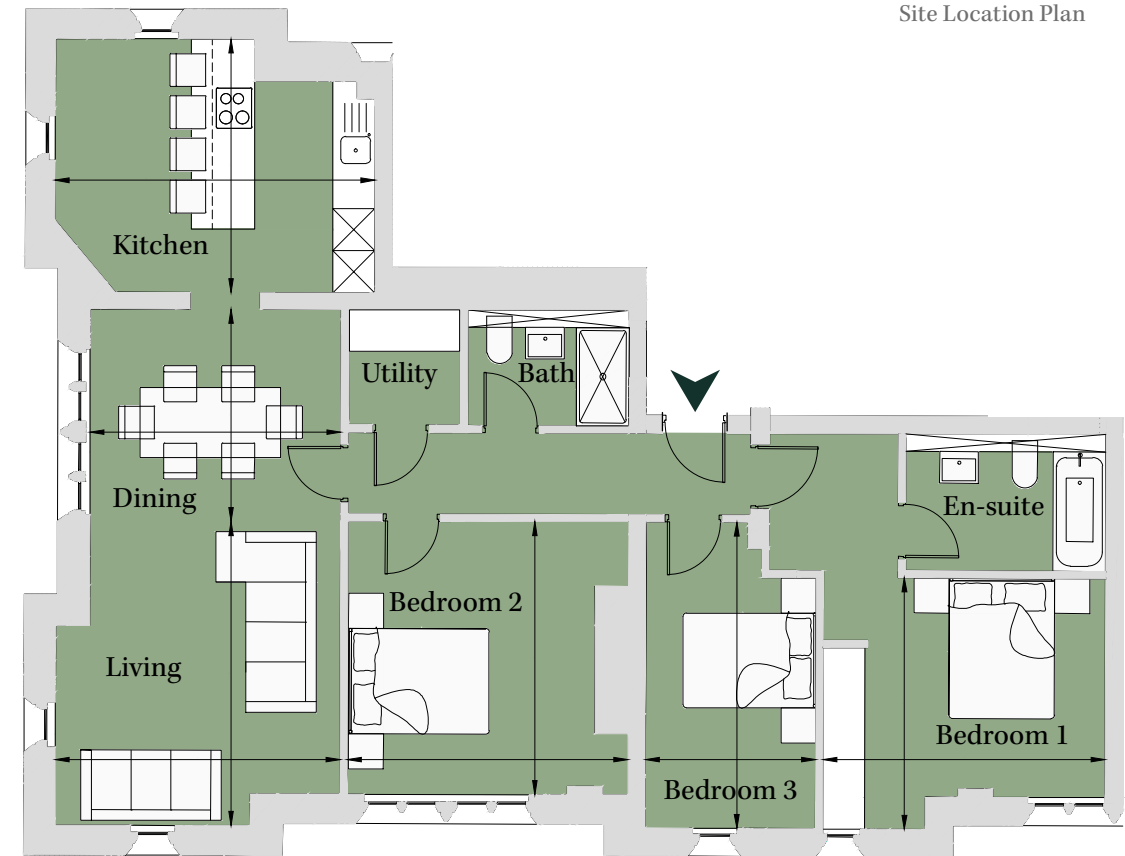
PLOT JA14
3 Bedroom Apartment

Second Floor
Total area 1,164 sq ft (108.2 sq m)

Living	14' 2" x 13' 4"	(4.32m x 4.05m)
Dining	9' 11" x 11' 9"	(3.02m x 3.57m)
Kitchen	11' 10" x 14' 11"	(3.60m x 4.55m)
Bedroom 1	11' 9" x 13' 2"	(3.58m x 4.01m)
Bedroom 2	12' 9" x 13' 1"	(3.88m x 3.99m)
Bedroom 3	14' 4" x 8'	(4.36m x 2.42m)



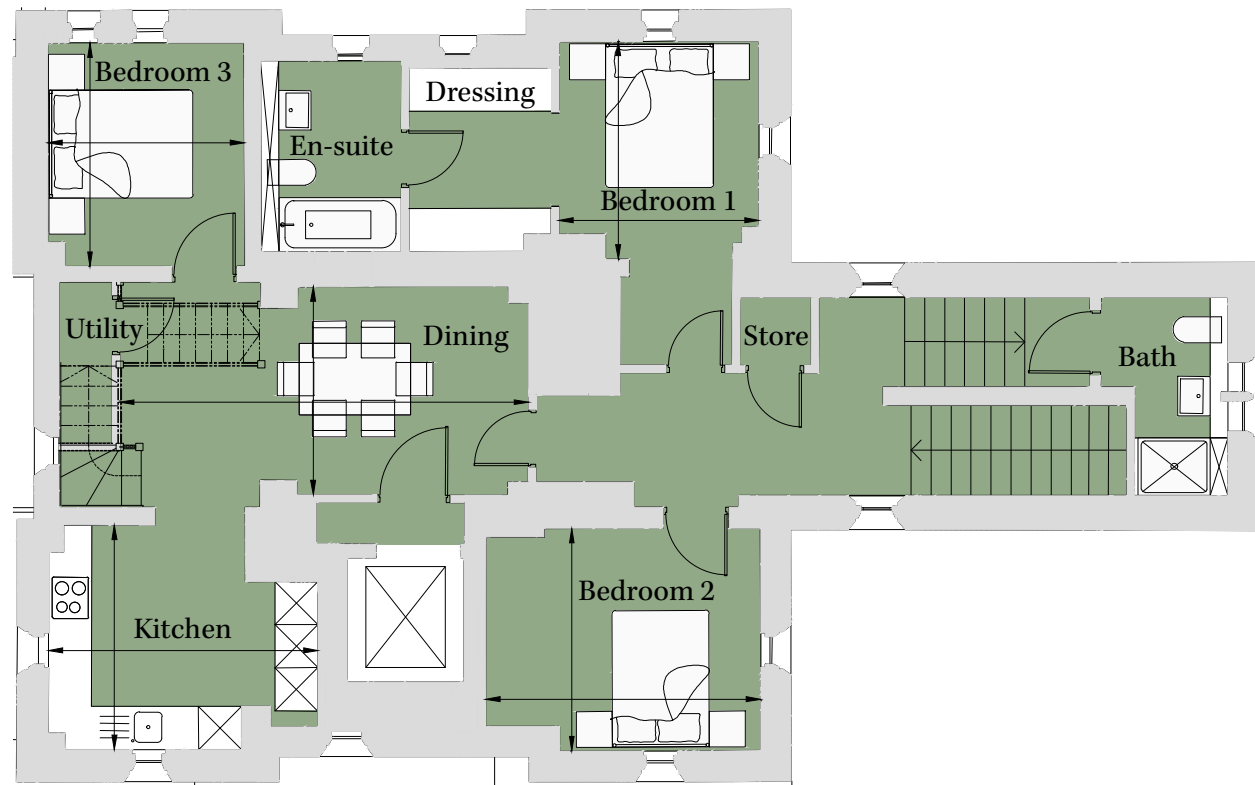
Site Location Plan



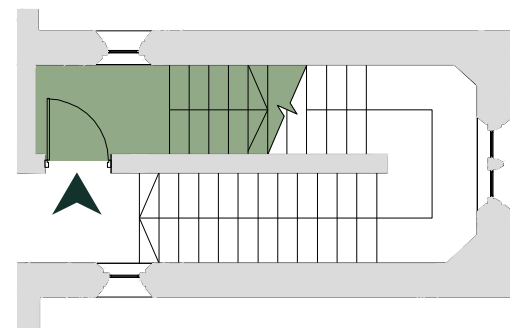
PLOT LU11
3 Bedroom Apartment

First/Second/Third Floor
Total area 1,486 sq ft (138 sq m)

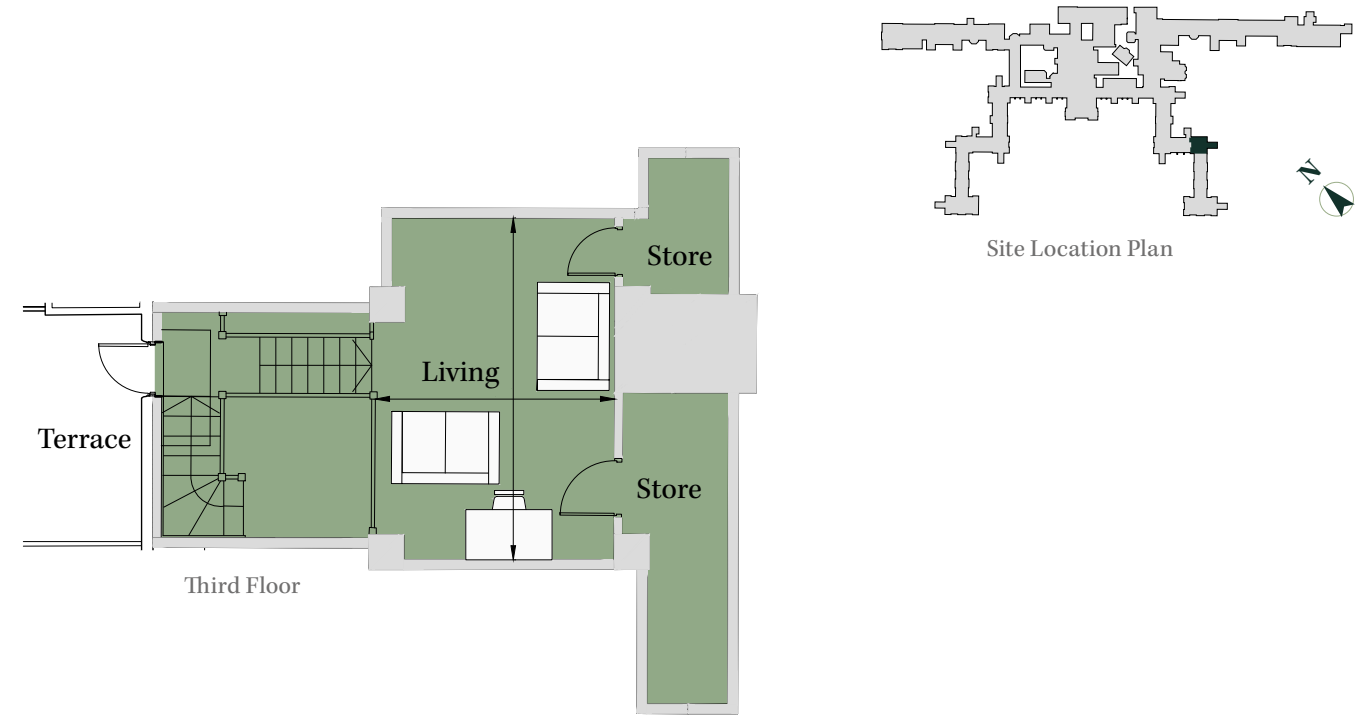
Living	15' 7" x 10' 11"	(4.75m x 3.33m)
Dining	9' 6" x 18' 8"	(2.89m x 5.68m)
Kitchen	10' 3" x 12' 4"	(3.12m x 3.74m)
Bedroom 1	9' 11" x 9' 2"	(3.02m x 2.78m)
Bedroom 2	10' 2" x 12' 7"	(3.09m x 3.82m)
Bedroom 3	10' 2" x 9'	(3.10m x 2.73m)



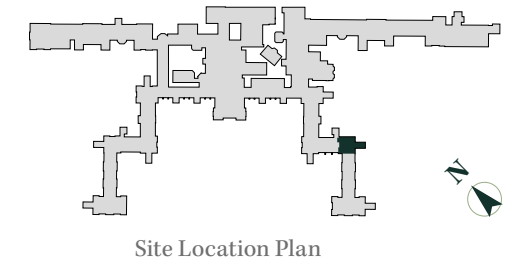
Second Floor



First Floor



Third Floor

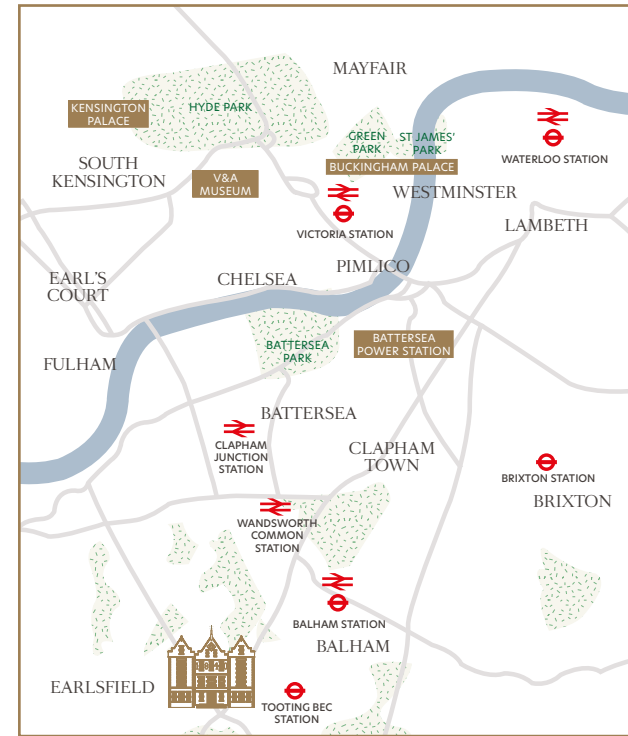
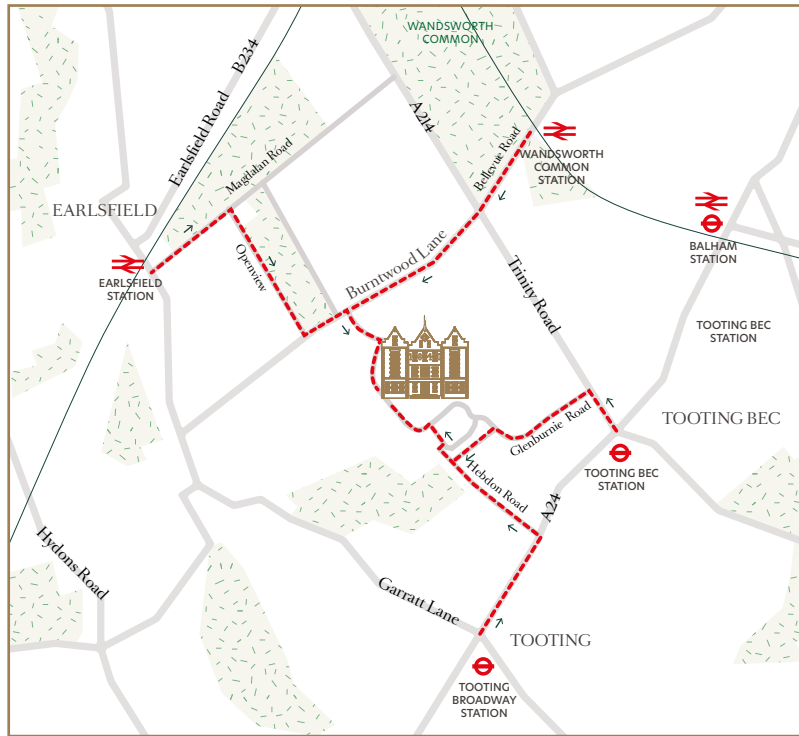


Site Location Plan



The 1840 Sales Suite
Diana House, 2 Holt Gardens
London SW17 7DJ

Telephone: 020 3993 3102
Email: The1840@cityandcountry.co.uk
Web address: cityandcountry.co.uk/The1840



Entrance to Sales Suite is from Burntwood Lane.
Please use postcode SW17 7DJ.



DISCLAIMER. CGIs are indicative only. Photography is indicative only and of other City & Country Show Homes. Travel times sources from tfl.gov.uk, Google maps, and National Rail. Please be aware that the information contained in this document is indicative and intended to act as a guide only to the finished product and the properties available. Due to the City & Country policy of continual improvement, the finished product may vary from the information provided and City & Country reserves the right to amend the specification. The contents herein shall not form any part of any contract or be a representation including such contract. These properties are offered subject to availability. Applicants are advised to contact the appointed agents to ascertain the availability of any particular type of property. These particulars should not be relied upon as statements of fact or representation and applicants must satisfy themselves as to their correctness. The 1840, St George's Gardens is a marketing name and does not form a part of the postal address. This development includes communal land and/or shared facilities. A management company will be set up by City & Country to ensure that these areas are continually managed to a high standard. Product related images contained within this brochure are from other City & Country developments and do not necessarily relate exactly to the specification of The 1840. Produced June 2021.

CHERISHING
HERITAGE
CREATING THE
FUTURE



CITY & COUNTRY

Heritage homes in the heart of South West London

cityandcountry.co.uk