



# THE GENERAL BRISTOL

## Floorplan – Plot 04-19

2 bedroom apartment

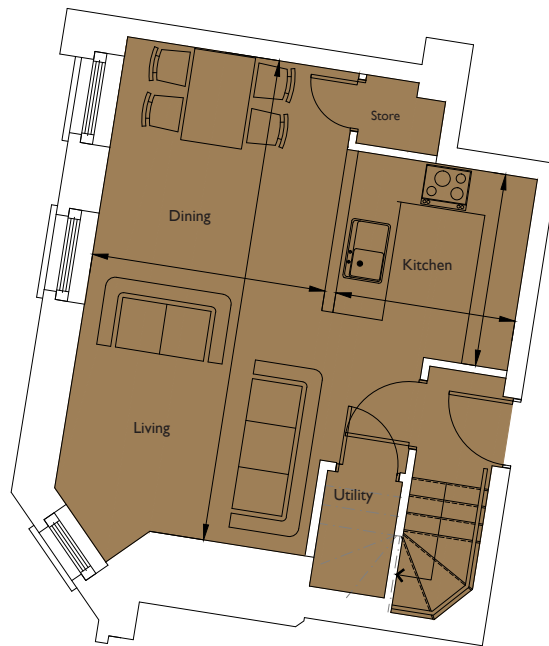
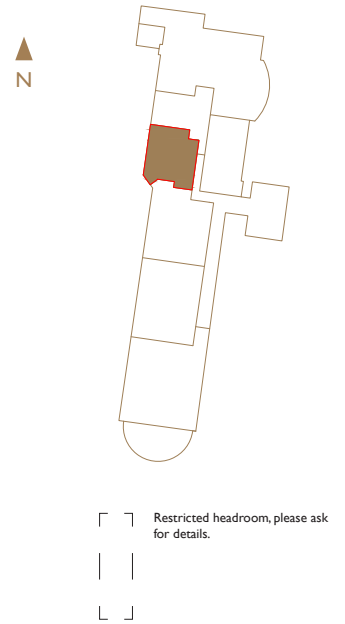
Second and Mezzanine Floor

Total area 737sq ft (68.5sq m)

Living/Dining	20ft 8in x 10ft 2in	(6.3m x 3.1m)
Kitchen	8ft 2in x 7ft 11in	(2.5m x 2.4m)
Bedroom 1	12ft 10in x 10ft 6in	(3.9m x 3.2m)
Bedroom 2	11ft 2in x 8ft 6in	(3.4m x 2.6m)



Second Floor Mezzanine



Second Floor

01174 539 549  
[sales@cityandcountry.co.uk](mailto:sales@cityandcountry.co.uk)  
[www.cityandcountry.co.uk](http://www.cityandcountry.co.uk)

