

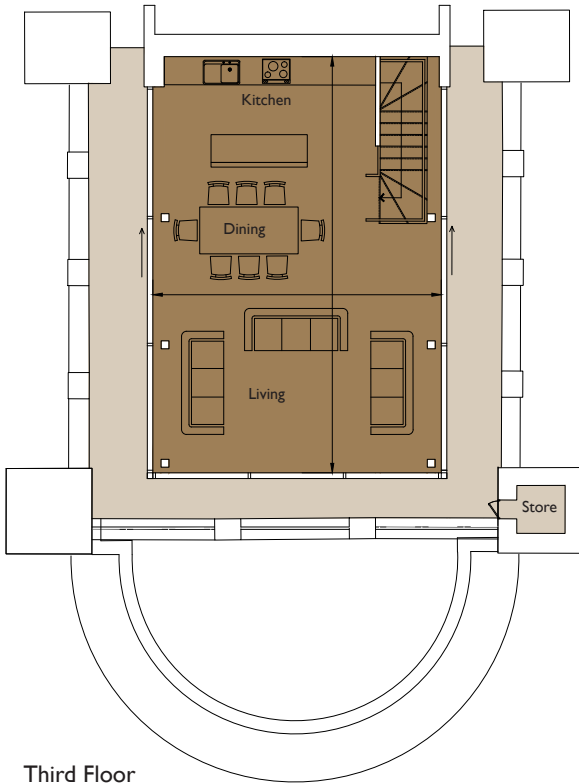


THE GENERAL BRISTOL

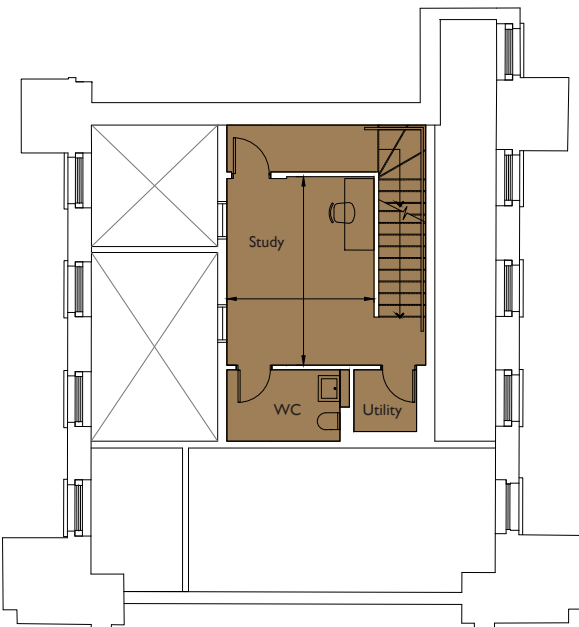
Floorplan – Plot 04-23

3 bedroom and study apartment
Second and Mezzanine, Third Floor
Total area 1819sq ft (169.0sq m)

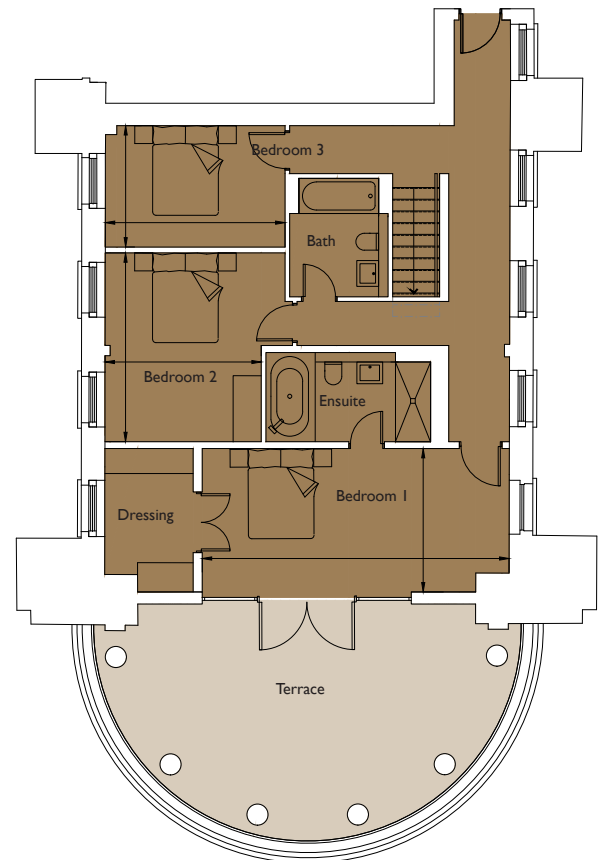
Living/Dining/	29ft 2in x 20ft 0in	(8.9m x 6.1m)
Kitchen		
Bedroom 1	21ft 4in x 10ft 2in	(6.5m x 3.1m)
Bedroom 2	13ft 2in x 10ft 10in	(4.0m x 3.3m)
Bedroom 3	12ft 6in x 8ft 6in	(3.8m x 2.6m)
Study	13ft 2in x 10ft 2in	(4.0m x 3.1m)



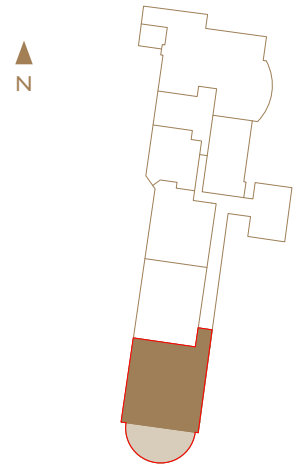
Third Floor



Second Floor



Second Floor Mezzanine



01174 539 549
sales@cityandcountry.co.uk
www.cityandcountry.co.uk

