



# THE GENERAL BRISTOL

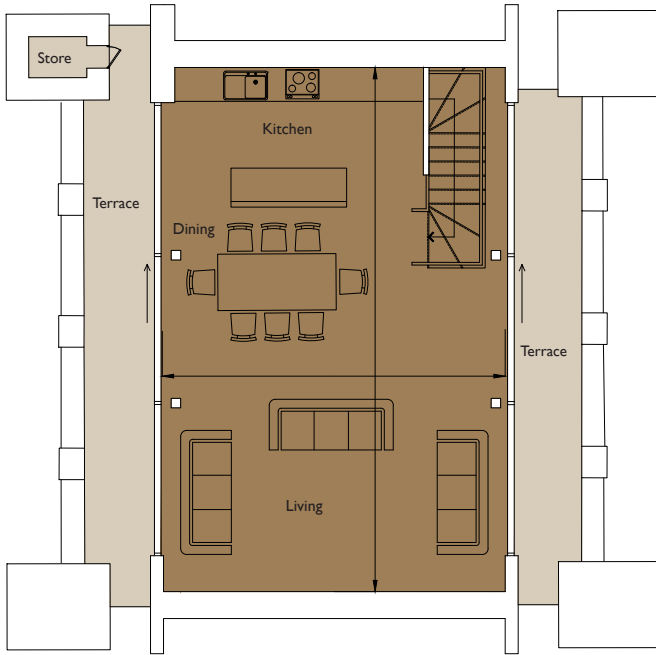
## Floorplan – Plot 04-22

2 bedroom apartment

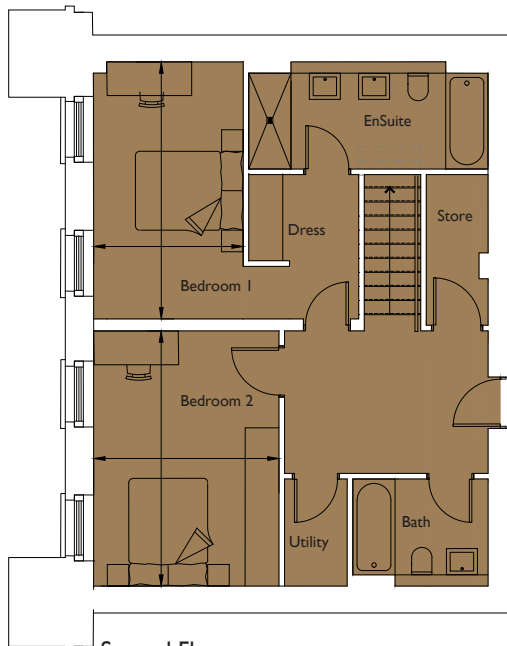
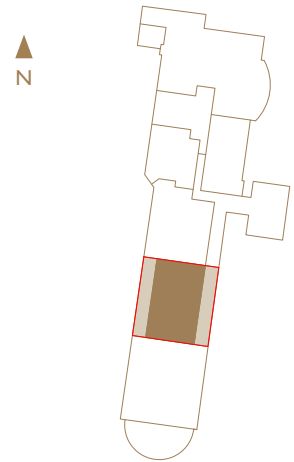
Second and Mezzanine, Third Floor

Total area 1717sq ft (159.5sq m)

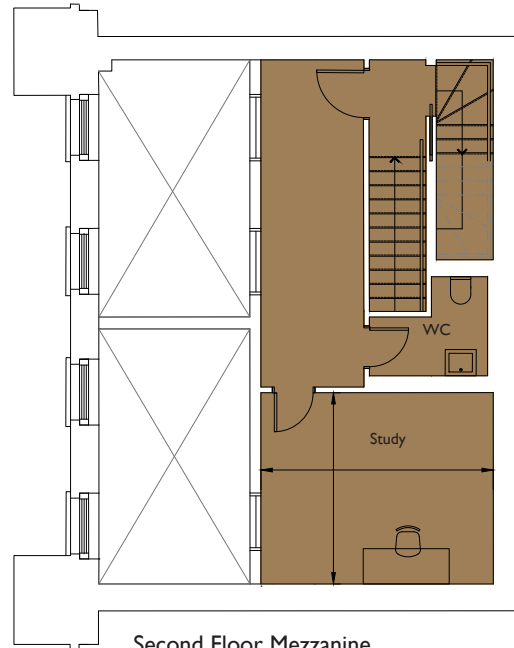
Living/Dining/	30ft 6in x 20ft	(9.3m x 6.1m)
Kitchen		
Bedroom 1	15ft 1in x 8ft 10in	(4.6m x 2.7m)
Bedroom 2	14ft 9in x 10ft 10in	(4.5m x 3.3m)
Study	13ft 5in x 11ft 2in	(4.1m x 3.4m)



Third Floor



Second Floor



Second Floor Mezzanine

01174 539 549  
sales@cityandcountry.co.uk  
www.cityandcountry.co.uk

CITY & COUNTRY