



THE GENERAL BRISTOL

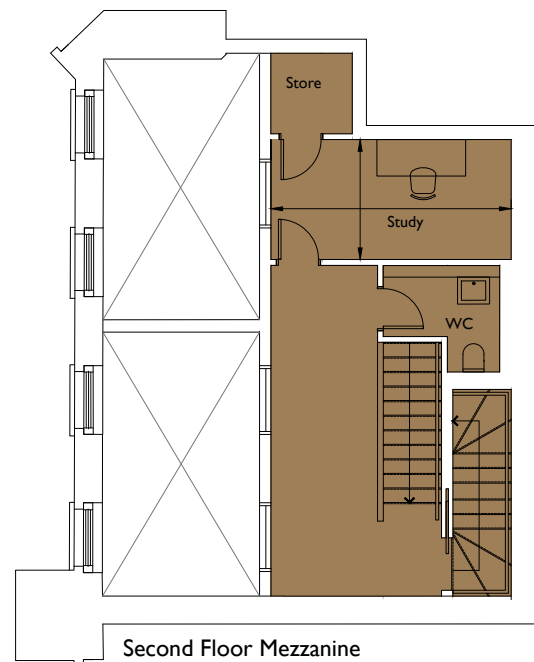
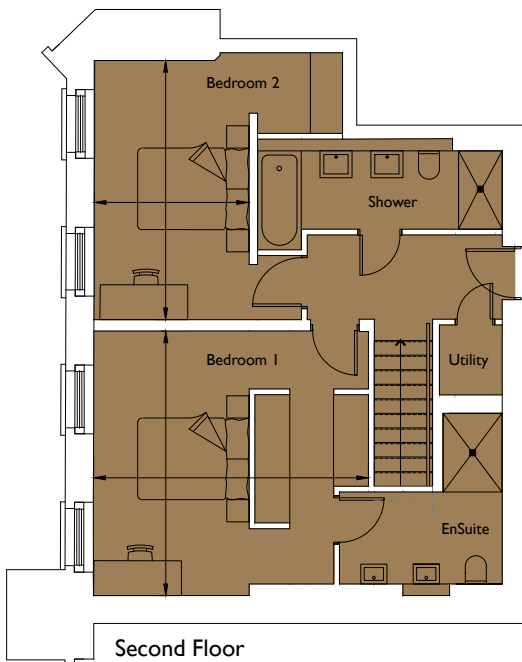
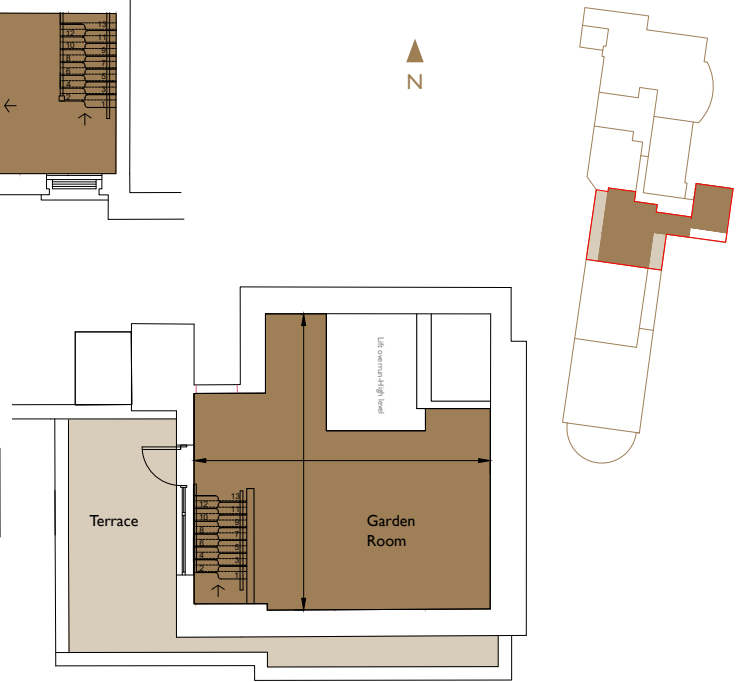
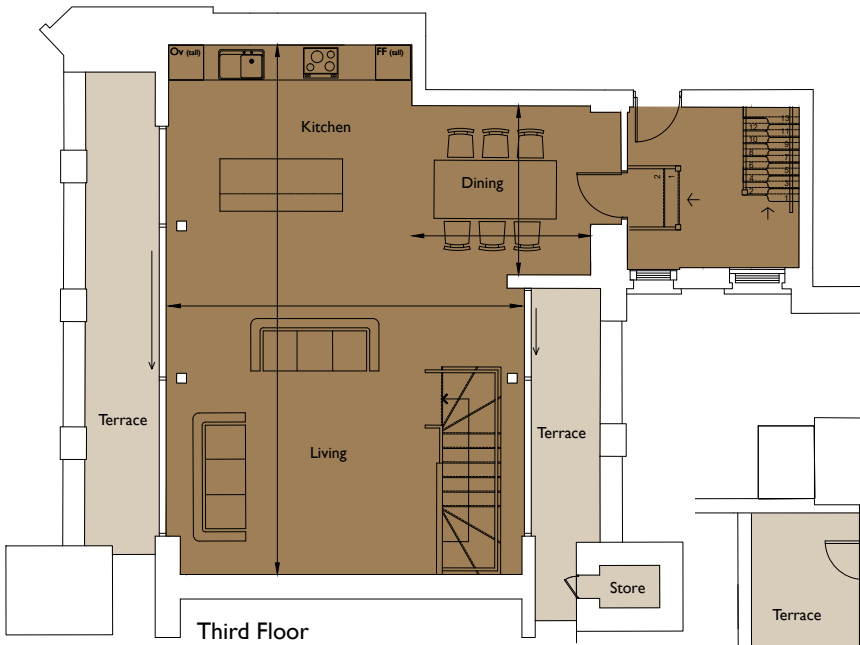
Floorplan – Plot 04-21

3 bedroom and study apartment

Second and Mezzanine, Third and Mezzanine Floor

Total area 1727sq ft (160.4sq m)

Kitchen/Living	29ft 10in x 20ft	(9.1m x 6.1m)
Dining Room	10ft 2in x 9ft 6in	(3.1m x 2.9m)
Bedroom 1	15ft 5in x 15ft 9in	(4.7m x 4.5m)
Bedroom 2	14ft 5in x 14ft 1in	(4.4m x 4.3m)
Study	13ft 5in x 6ft 11in	(4.1m x 2.1m)
Garden Room	16ft 4in x 16ft 7in	(5.0m x 5.1m)



01174 539 549
sales@cityandcountry.co.uk
www.cityandcountry.co.uk

CITY & COUNTRY